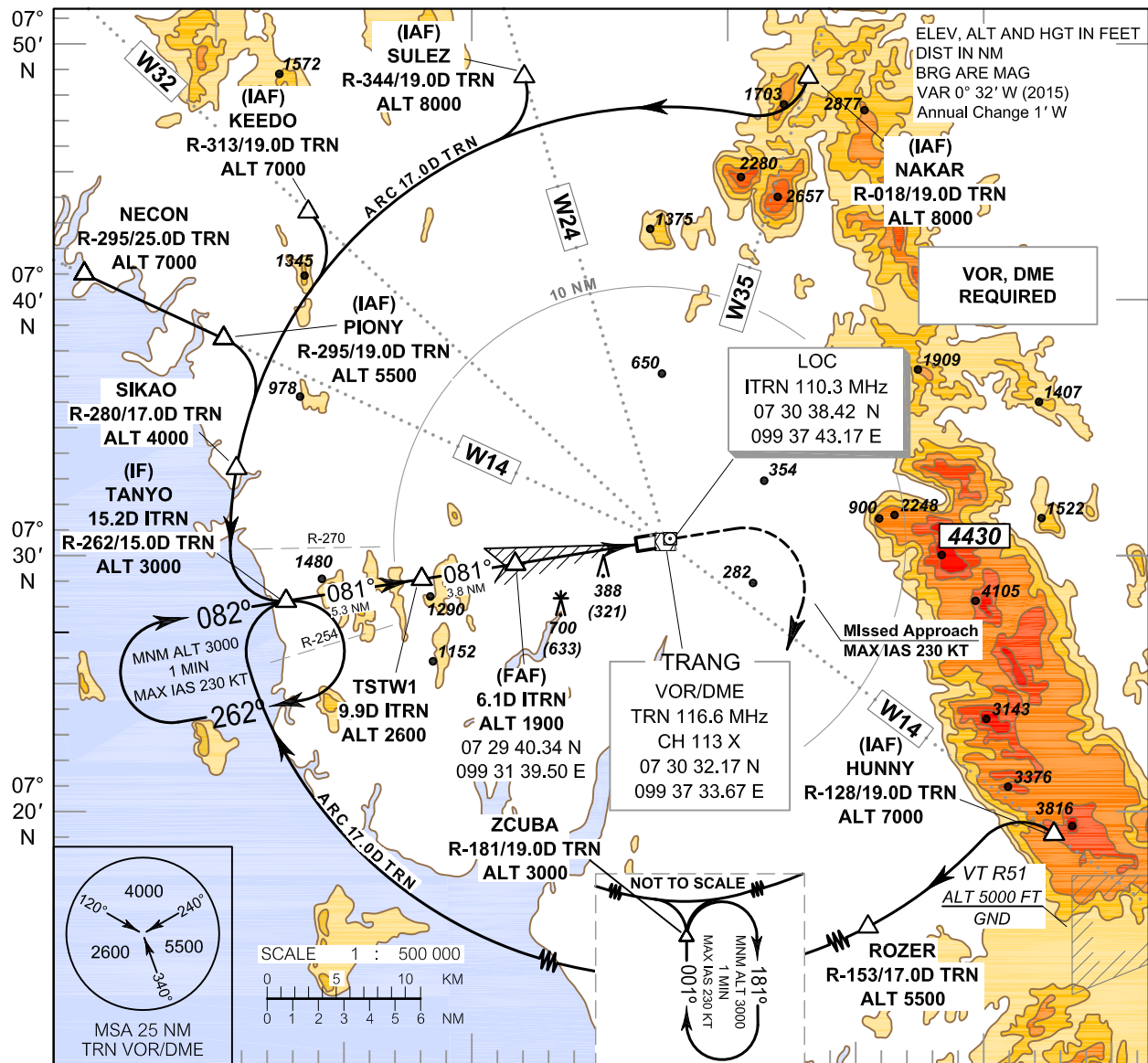


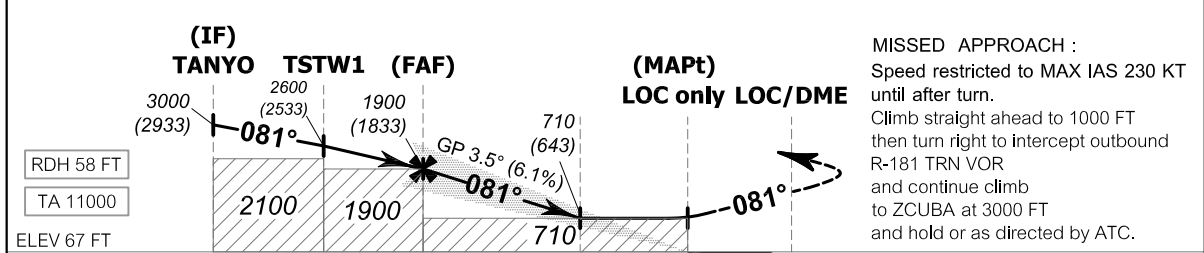
INSTRUMENT APPROACH CHART - ICAO
 AERODROME ELEV 67 FT
 HEIGHTS RELATED TO THR RWY08 - ELEV 67 FT

APP : 125.3
 TWR : 118.4 , 236.6

TRANG / Trang (VTST)
 ILS or LOC RWY08



099° 20' E 099° 30' E 099° 40' E 099° 50' E



RDH 58 FT
 TA 11000
 ELEV 67 FT (THR RWY08)

MISSED APPROACH :
 Speed restricted to MAX IAS 230 KT until after turn.
 Climb straight ahead to 1000 FT then turn right to intercept outbound R-181 TRN VOR and continue climb to ZCUBA at 3000 FT and hold or as directed by ATC.

NM FM THR08 DME FM LOC/DME

| OCA/H | | A | B | C | D | GS OUT | Distance (ITRN) | FAF | 6D | 5D | 4D | 3D | 2.9D |
|----------------------|-------|-------------|-------|-------|-------|-----------------|-------------------|--------|--------|--------|-------|-------|------|
| Straight-in approach | CAT I | 570 | 580 | 590 | 600 | | Altitude (Height) | 1900 | 1860 | 1490 | 1120 | 750 | 710 |
| | | (503) | (513) | (523) | (533) | (1833) | | (1793) | (1423) | (1053) | (683) | (643) | |
| LOC Only | | 710 (643) | | | | Ground speed | knot | 70 | 90 | 100 | 120 | 140 | 160 |
| Circling (OCH AAL) | | 1100 (1033) | | | | Rate of descent | (ft/min) | 432 | 556 | 618 | 741 | 865 | 988 |