

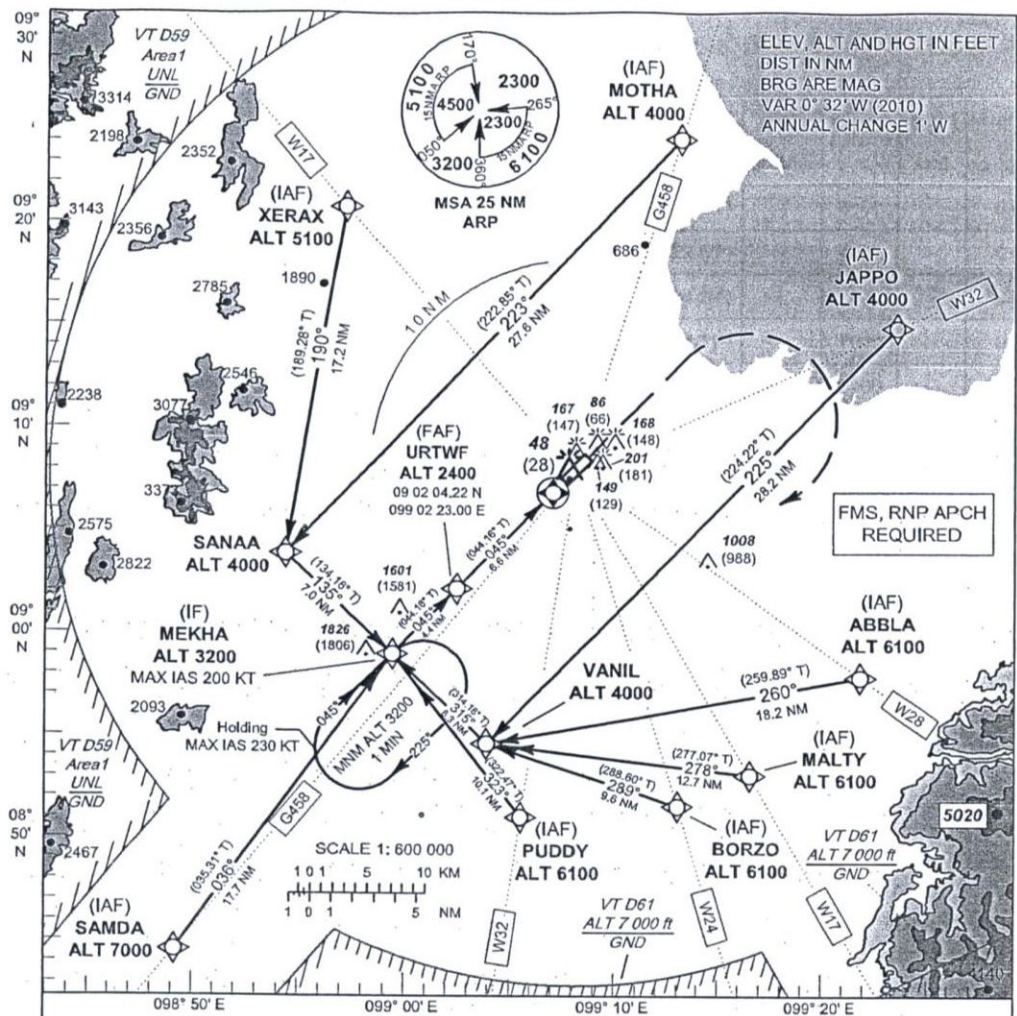
**INSTRUMENT
APPROACH
CHART - ICAO**

**AERODROME ELEV 20 FT
HEIGHTS RELATED TO
AERODROME ELEV**

APP : 123.35, 240.0
TWR : 122.7, 274.5
GND : 121.9, 275.8

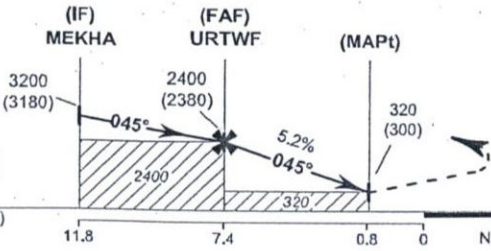
SURAT THANI / Surat thani (VTBS)

RNAV (GNSS) RWY04



ELEV, ALT AND HGT IN FEET
DIST IN NM
BRG ARE MAG
VAR 0° 32' W (2010)
ANNUAL CHANGE 1' W

FMS, RNP APCH
REQUIRED



MISSED APPROACH:
No turn before MAPt.
Climb on track 045° to 1500 FT
then turn right direct to IF at 3200 FT
and hold or as directed by ATC.

OCA/H	A	B	C	D	NM to THR 04	FAF 7 NM	6 NM	5 NM	4 NM	3 NM	2 NM	1 NM	0.8 NM	
LNAV	320 (300)				Altitude (Height)	2400 (2380)	2280 (2260)	1965 (1945)	1650 (1630)	1335 (1315)	1020 (1000)	700 (680)	385 (365)	320 (300)
					Ground speed (GS)	knot	100	120	140	160	180	200		
Circling (OCH AAL)	600 (580)		760 (740)		Rate of descent	(ft/min)	530	640	745	850	955	1060		