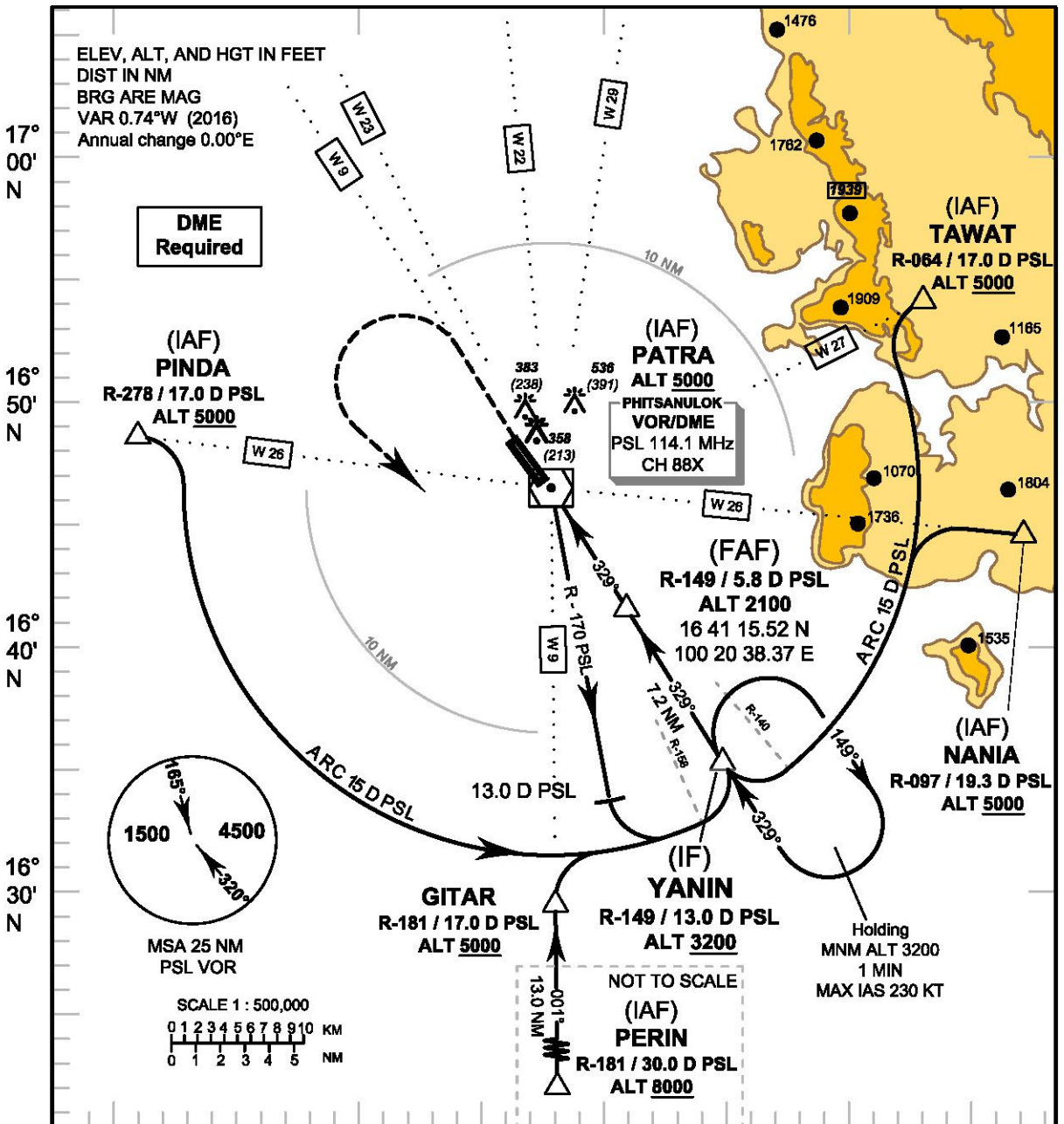


**INSTRUMENT AERODROME ELEV 145 FT**  
**APPROACH HEIGHTS RELATED TO**  
**CHART - ICAO AERODROME ELEV**

APP : 120.7, 284.0  
 TWR : 118.9, 236.6  
 GND : 121.9

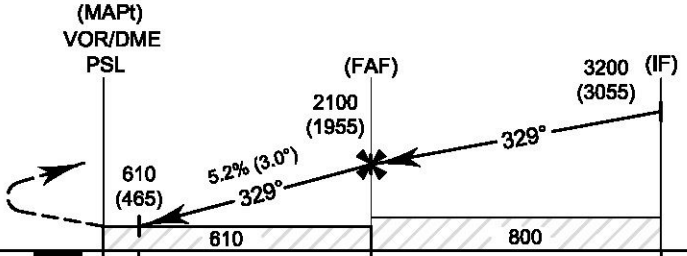
**PHITSANULOK/Phitsanulok (VTPP)**  
**VOR RWY32**



100° 00' E      100° 10' E      100° 20' E      100° 30' E

**TA 11000**

**Missed Approach :**  
**No turn before MAPt.**  
 Climb straight ahead to 1600 FT,  
 then turn left to intercept  
 outbound R-149 PSL VOR, then  
 proceed to **YANIN** at 3200 FT  
 and hold or as directed by ATC.



ELEV 145 FT  
 (THR RWY 32)

NM FM THR 32      0 0.2 1.3      6.0      13.2

DME FM VOR/DME      0 1.1      5.8      13.0

| OCA/H                  | A         | B | C         | D | Distance (PSL)         | 1.1 D     | 2 D       | 3 D         | 4 D         | 5 D         | FAF         |     |
|------------------------|-----------|---|-----------|---|------------------------|-----------|-----------|-------------|-------------|-------------|-------------|-----|
| Straight - in approach | 610 (465) |   |           |   | Altitude (Height)      | 610 (465) | 890 (745) | 1205 (1060) | 1520 (1375) | 1840 (1695) | 2100 (1955) |     |
|                        |           |   |           |   | Ground Speed           | knot      | 70        | 90          | 100         | 120         | 140         | 160 |
| Circling (OCH AAL)     | 840 (695) |   | 930 (785) |   | Rate of descent (5.2%) | (ft/min)  | 369       | 474         | 527         | 632         | 737         | 843 |