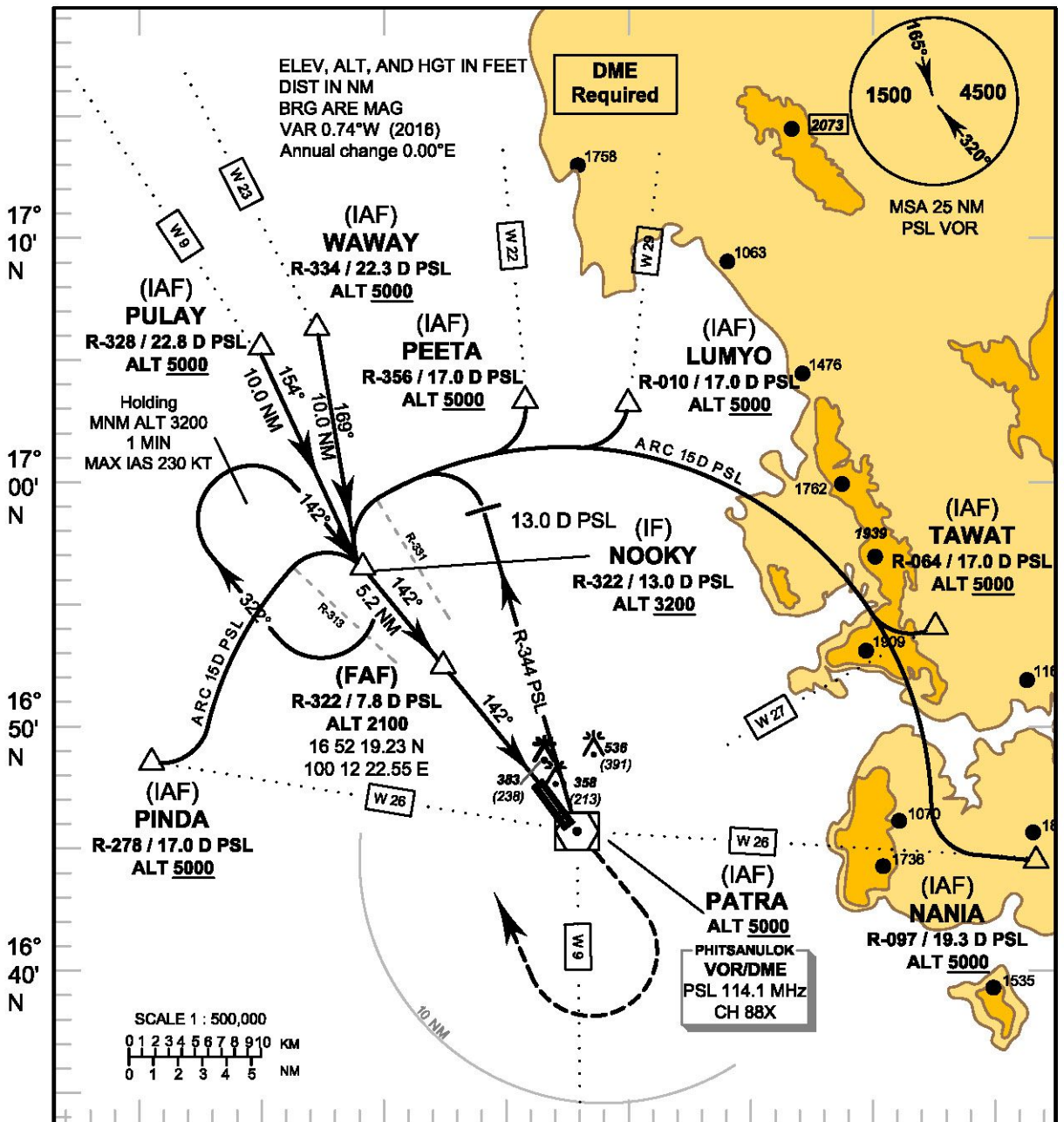


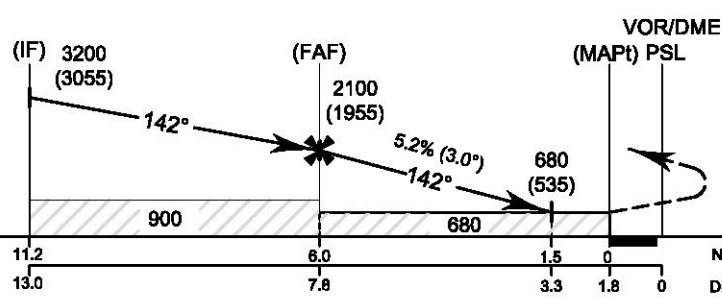
INSTRUMENT APPROACH AERODROME ELEV 145 FT
HEIGHTS RELATED TO CHART - ICAO AERODROME ELEV

APP : 120.7, 284.0
 TWR : 118.9, 236.6
 GND : 121.9

PHITSANULOK/Phitsanulok (VTPP)
VOR RWY14



TA 11000



Missed Approach :
No turn before MAPt.
 Climb on R-322 to PSL VOR, then climb straight ahead to 1600 FT, and turn right to intercept outbound R-322 PSL VOR, then proceed to NOOKY at 3200 FT and hold or as directed by ATC.

ELEV 145 FT
 (THR RWY 14)

OCA/H	A	B	C	D	Distance (PSL)	FAF	7 D	6 D	5 D	4 D	3.3 D	
Straight - in approach	680 (535)				Altitude (Height)	2100 (1955)	1835 (1690)	1520 (1375)	1205 (1060)	890 (745)	680 (535)	
					Ground Speed	knot	70	90	100	120	140	160
Circling (OCH AAL)	840 (695)		930 (785)		Rate of descent (5.2%)	(ft/min)	369	474	527	632	737	843