

**INSTRUMENT
APPROACH
CHART - ICAO**

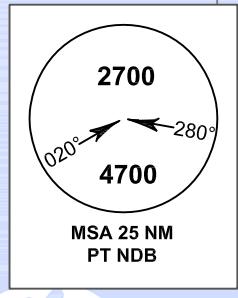
**AERODROME ELEV 8 FT
HEIGHTS RELATED TO
AERODROME ELEV**

APP : 126.0
TWR : 119.3

**PATTANI / Pattani (VTSK)
NDB RWY26
CAT A, B**

ELEV, ALT AND HGT IN FEET
DIST IN NM
BRG ARE MAG
VAR 0°14' W (2016)
ANNUAL CHANGE 0°0' E

VT D50
1. UNL
ALT 8 000 ft
2. ALT 6 000 ft
GND



07° 00' N

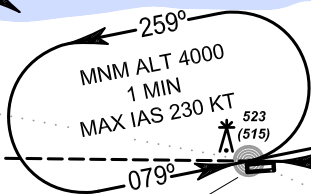
06° 50' N

06° 40' N

Gulf of Thailand

W14

BRG-271



523
(515)

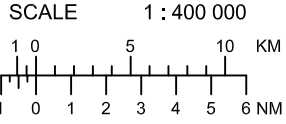
BRG-079

CAT A, B 3.0 min

**(IAF)
ALT 4000
PATTANI
NDB
PT 201 kHz
06 47 18.45 N
101 08 52.51 E**

VT D49
UNL
ALT 2 000 ft

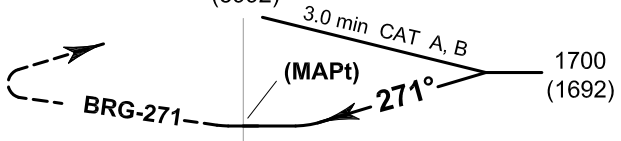
W14



100° 50' E 101° 00' E 101° 10' E 101° 20' E

**(IAF)
PT NDB
4000
(3992)**

MISSED APPROACH :
Climb on BRG - 271 until 2000 FT,
then turn right direct to PT NDB
at 4000 FT and hold or
as directed by ATC.



TA 11000

ELEV 8 FT
(THR RWY 26)

OCA/H	A	B
Straight - in approach	770 (762)	
Circling (OCH AAL)	1900 (1892)	