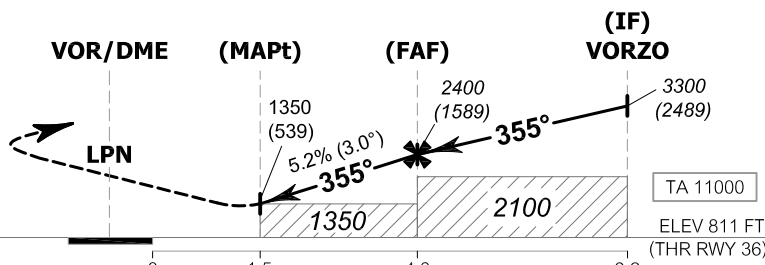


MISSED APPROACH :
 Speed restricted to MAX IAS 230 KT until after turn.
 Climb straight ahead to 2500 FT then turn left and continue climb on heading 126° to LPN VOR then turn right to intercept R-154 LPN VOR and continue climb to MARBO at 6000 FT and hold or as directed by ATC.



NM FM THR 36	0	1.5	4.8	9.2	
DME FM VOR/DME	0	0.8	2.3	5.6	10.0

OCA/H	A	B	C	D	Distance (LPN)	MAPt	3D	4D	5D	FAF		
Straight - in approach	1350 (539)				Altitude (Height)	1350 (539)	1560 (749)	1880 (1069)	2190 (1379)	2400 (1589)		
	Ground speed		knot		70	90	100	120	140	160		
Circling (OCH AAL)	1350 (539)		1500 (689)		Rate of descent	(ft/min)	369	474	527	632	737	843

REMARK : FOR CIRCLING RESTRICTION SEE VERSO