

STANDARD DEPARTURE CHART - INSTRUMENT (SID) - ICAO

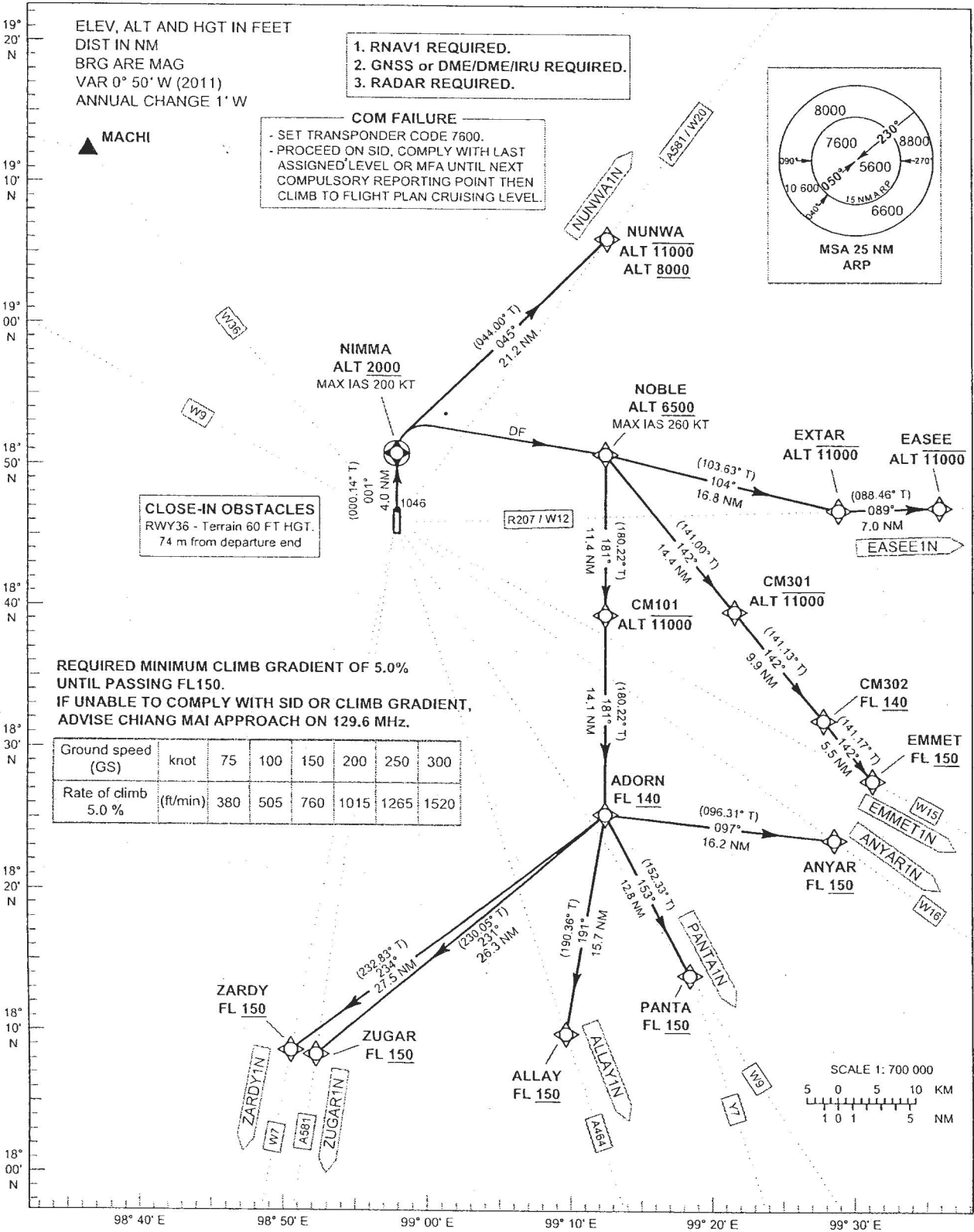
TRANSITION ALTITUDE
11000 FT

APP : 129.6 , 305.4
TWR : 118.1 , 236.6
GND : 121.9 , 275.8
ATIS : 127.2 , 301.5

CHIANG MAI /
Chiang Mai Intl (VTCC)

RNAV RWY36

NUNWA1N EASEE1N EMMET1N ANYAR1N PANTA1N ALLAY1N ZUGAR1N ZARDY1N



ELEV, ALT AND HGT IN FEET
DIST IN NM
BRG ARE MAG
VAR 0° 50' W (2011)
ANNUAL CHANGE 1' W

1. RNAV1 REQUIRED.
2. GNSS or DME/DME/IRU REQUIRED.
3. RADAR REQUIRED.

COM FAILURE

- SET TRANSPONDER CODE 7600.
- PROCEED ON SID, COMPLY WITH LAST ASSIGNED LEVEL OR MFA UNTIL NEXT COMPULSORY REPORTING POINT THEN CLIMB TO FLIGHT PLAN CRUISING LEVEL.

CLOSE-IN OBSTACLES
RWY36 - Terrain 60 FT HGT.
74 m from departure end

REQUIRED MINIMUM CLIMB GRADIENT OF 5.0%
UNTIL PASSING FL150.
IF UNABLE TO COMPLY WITH SID OR CLIMB GRADIENT,
ADVISE CHIANG MAI APPROACH ON 129.6 MHz.

Ground speed (GS)	knot	75	100	150	200	250	300
Rate of climb 5.0 %	(ft/min)	380	505	760	1015	1265	1520

