

**INSTRUMENT
APPROACH
CHART - ICAO**

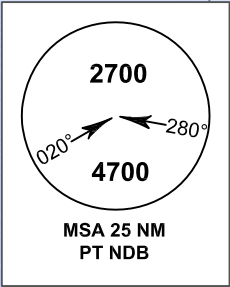
**AERODROME ELEV 8 FT
HEIGHTS RELATED TO
AERODROME ELEV**

APP : 126.0
TWR : 119.3

**PATTANI / Pattani (VTSK)
NDB RWY26
CAT A, B**

ELEV, ALT AND HGT IN FEET
DIST IN NM
BRG ARE MAG
VAR 0°14' W (2016)
ANNUAL CHANGE 0°0' E

VT D50
1. UNL
ALT 8 000 ft
2. ALT 6 000 ft
GND



07° 00' N

06° 50' N

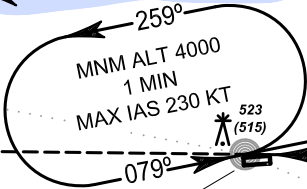
06° 40' N

10 NM

Gulf of Thailand

W14

BRG-271



523
(515)

BRG-079

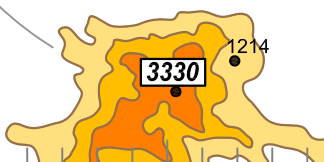
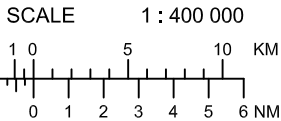
271°

CAT A, B 3.0 min

(IAF)
ALT 4000
PATTANI
NDB
PT 201 kHz
06 47 18.45 N
101 08 52.51 E

VT D49
UNL
ALT 2 000 ft

W14



100° 50' E

101° 00' E

101° 10' E

101° 20' E

(IAF)
PT NDB

4000
(3992)

3.0 min CAT A, B

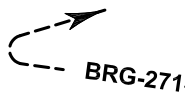
1700
(1692)

TA 11000

ELEV 8 FT
(THR RWY 26)

MISSED APPROACH :

Climb on BRG - 271 until 2000 FT,
then turn right direct to PT NDB
at 4000 FT and hold or
as directed by ATC.



| OCA/H | A | B |
|------------------------|-------------|---|
| Straight - in approach | 770 (762) | |
| Circling (OCH AAL) | 1900 (1892) | |