

**INSTRUMENT APPROACH CHART - ICAO**

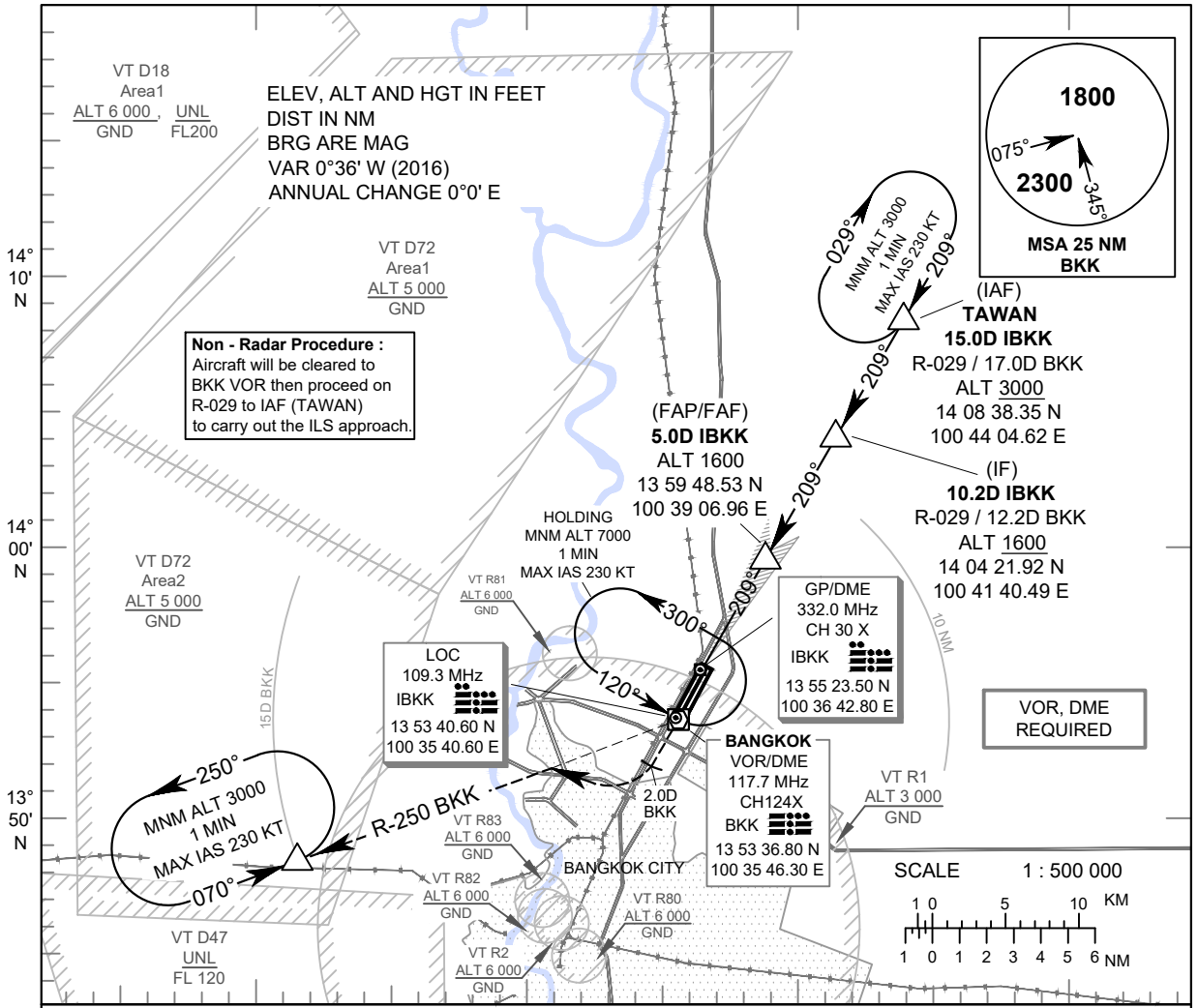
**AERODROME ELEV 9 FT HEIGHTS RELATED TO THR RWY21R - ELEV 7 FT**

APP : 119.1, 262.5  
 : 119.4, 262.5  
 : 120.3, 262.5  
 : 121.7, 262.5  
 : 122.35, 262.5  
 : 124.35, 262.5  
 : 125.2, 262.5  
 DAR : 125.5, 262.5  
 TWR : 118.1, 236.6  
 ATIS : 126.4, 344.6

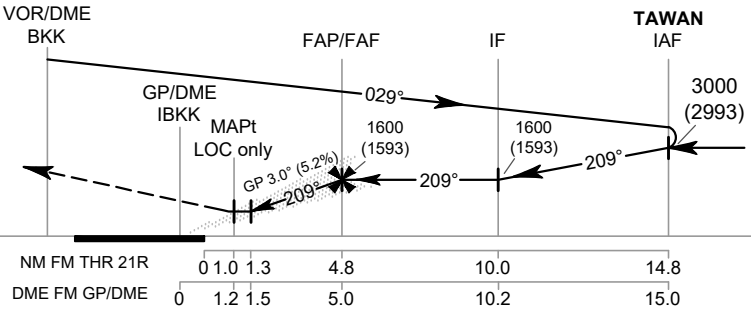
**BANGKOK / Don Mueang Intl (VTBD)**

**ILS or LOC y RWY21R**

**CAT II**



**MISSED APPROACH :**  
Climb on runway heading until 2 DME BKK outbound then turn right continue climb on R-250 BKK VOR to 3000 FT and hold at 15 DME BKK VOR or as directed by ATC.



ELEV 7 FT (THR RWY21R)		RDH 54 FT		TA 11000		NM FM THR 21R		0 1.0 1.3 4.8 10.0 14.8		DME FM GP/DME		0 1.2 1.5 5.0 10.2 15.0		
OCA/H		A	B	C	D	Distance (IBKK)		1.5 DME	2 DME	3 DME	4 DME			
Straight-in Approach	CAT I	220 (213)				Altitude (Height)		470 (463)	630 (623)	950 (943)	1265 (1258)			
	CAT II	120 (113)	150 (143)			Ground speed		knot	100	120	140	160	180	200
LOC only		470 (463)				FAF-MAPt 3.8 NM		(min:s)	2:17	1:54	1:38	1:26	1:16	1:08
Circling (OCH AAL)		700 (691)	800 (791)	1100 (1091)	Rate of descent		(ft/min)	530	637	743	849	955	1061	

CHANGE, REALIGNMENT, LANDING MINIMA TABLE.