

INSTRUMENT APPROACH CHART-ICAO **AERODROME ELEV 64 FT**
HEIGHTS RELATED TO THR RWY 17 ELEV 43 FT

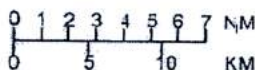
APP : 129.6, 305.4
 TWR : 118.9
 GND : 121.9
 ATIS : 128.6

SURATTANI/Samui (VTSM)
RNAV (GNSS) RWY 17
CAT C

ELEV, ALT, AND HGT IN FEET
 DIST IN NM
 BRG ARE MAG
 VAR 0° 06' W (2001)

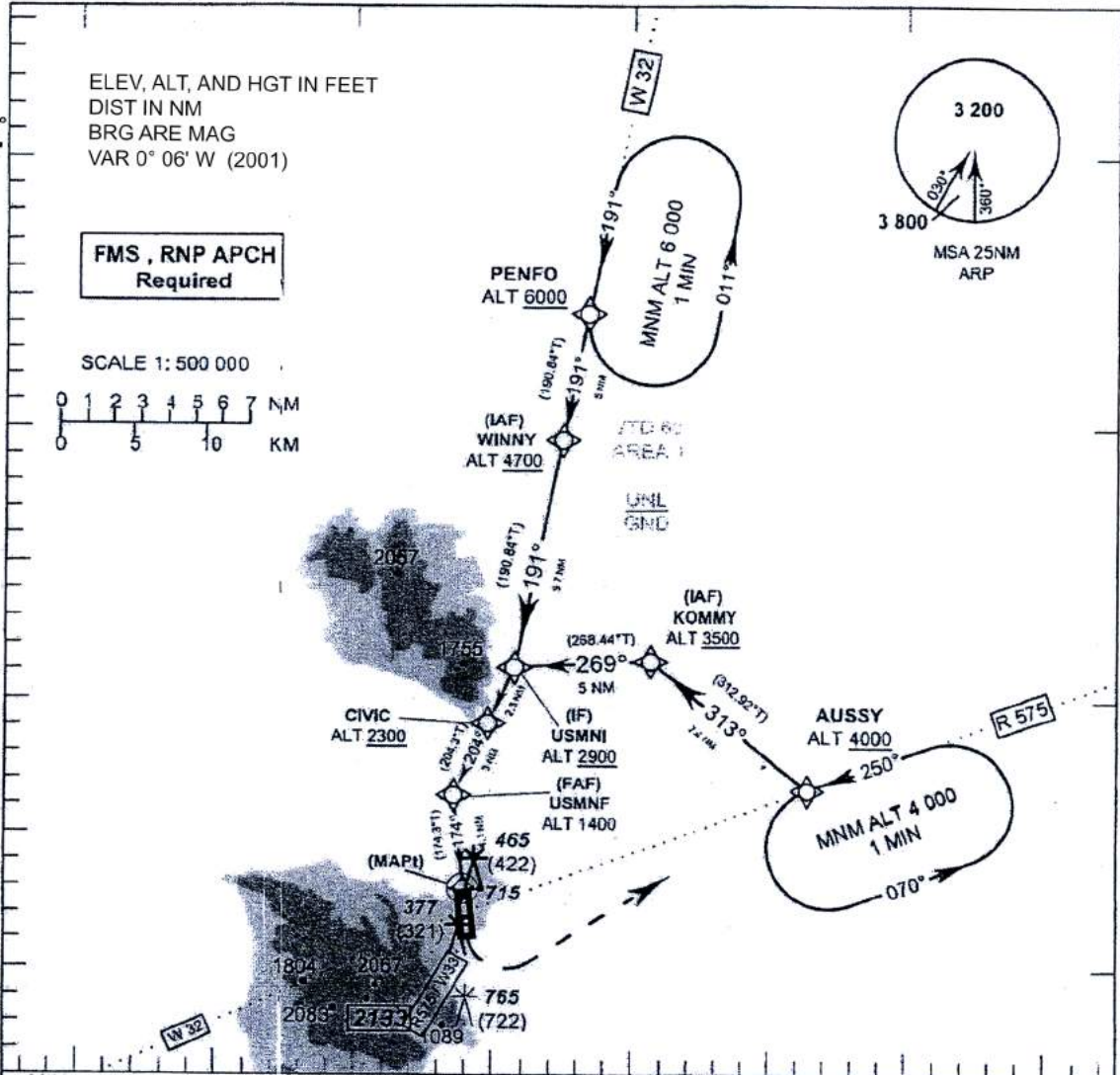
FMS, RNP APCH
Required

SCALE 1: 500 000



10° 00' N
09° 50' N
09° 40' N
09° 30' N

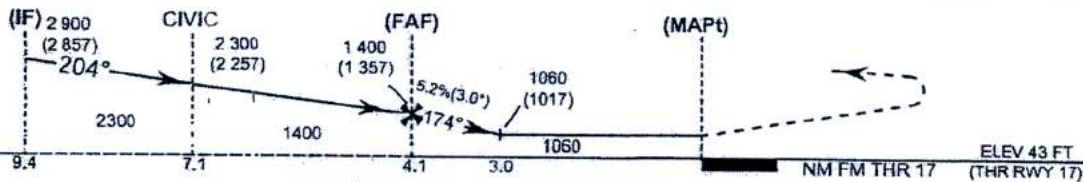
099° 50' E 100° 00' E 100° 10' E 100° 20' E



TA 11 000

Remark: During trial, operate under VMC only and reduce max cross wind limitation by 10 knots.

Missed Approach :
 Climb straight ahead to ALT 1300 FT, then turn left direct to AUSSY continue climb to 4000 FT, and hold or as directed by ATC.



OCA/H	C	Distance to THR	FAF						3 NM						
LNAV	1060 (1017)	Altitude (Height)	1400 (1357)						1060 (1017)						
Circling*	1160 (1096)	Ground Speed (GS)	knot	100	120	140	160	180	200						
* FOR CIRCLING RESTRICTIONS SEE VERSO		FAF-MAPt	(min/s)	2:28	2:03	1:46	1:33	1:22	1:14						
		Rate of descent	(ft/min)	530	640	745	850	955	1 060						

CHANGE : PAGE NUMBER CHANGED.