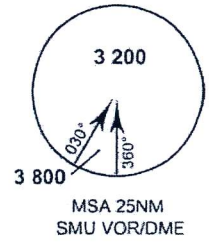


ELEV, ALT, AND HGT IN FEET
 DIST IN NM
 BRG ARE MAG
 VAR 0° 06' W (2001)

DME Required



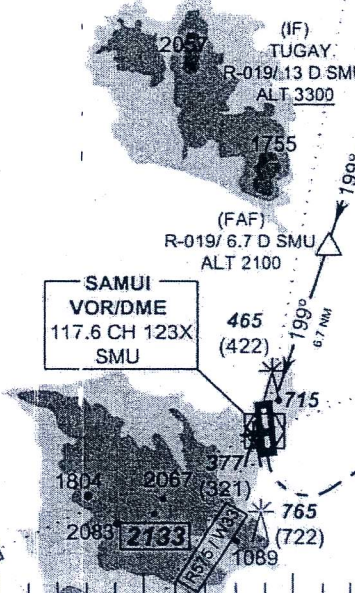
10° 00' N

09° 50' N

09° 40' N

09° 30' N

99° 50' E 100° 00' E 100° 10' E 100° 20' E



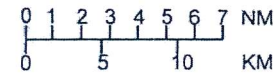
VTD 60 AREA 1

UNL GND

AUSSY R-070/13D SMU

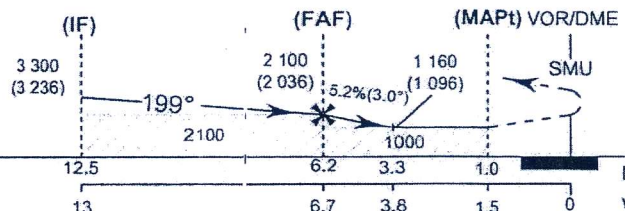


SCALE 1: 500 000



TA 11 000

Missed Approach :
 Climb straight ahead to SMU VOR, then turn left to intercept R-070 (SMU) proceed to **AUSSY** continue climb to 4000 FT and hold or as directed by ATC.



CHANGE : PAGE NUMBER CHANGED.

OCA/H	A	B	Distance(SMU)		6.7 DME	6 DME	5 DME	3.8 DME		
			Distance(SMU)	Altitude (Height)	2100 (2036)	1870 (1806)	1550 (1486)	1160 (1096)		
Straight-in approach	NOT AUTHORIZED		Ground Speed (GS)	knot	100	120	140	160	180	200
			Rate of descent	(ft/min)	530	640	745	850	955	1 060
Circling* (OCH AAL)	1'60 (1096)		FAF-MAPt 5.2 NM	(min/s)	3:07	2:36	2:14	1:57	1:44	1:34