

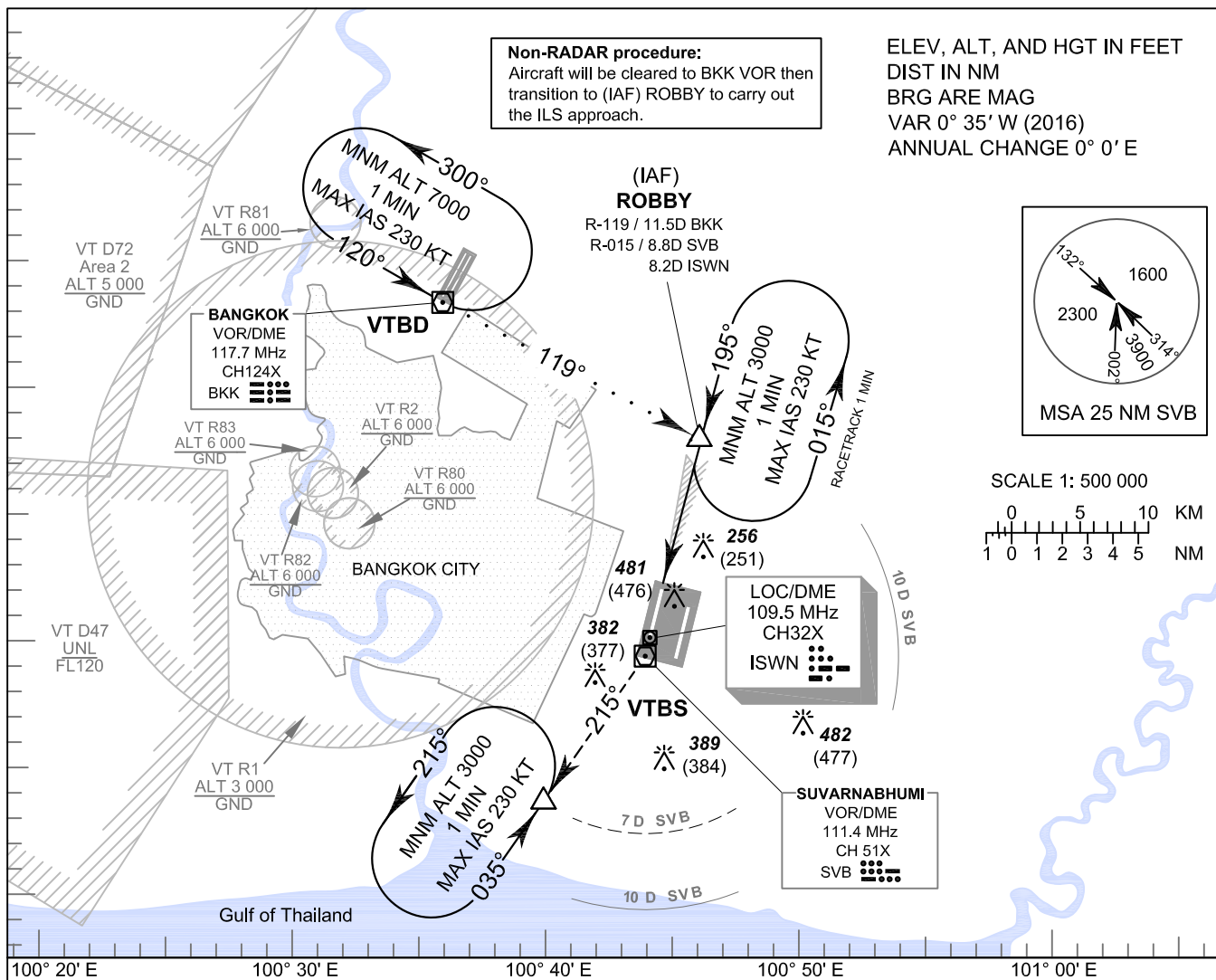
**INSTRUMENT
APPROACH
CHART - ICAO**

**AERODROME ELEV 5 FT
HEIGHTS RELATED TO
THR RWY19R - ELEV 5 FT**

APP : 119.1, 262.5
: 120.3, 262.5
: 121.7, 262.5
: 122.35, 262.5
: 124.35, 262.5
: 125.2, 262.5
ARR : 121.1
: 126.3
TWR : 118.2, 274.5
: 119.0
ATIS : 133.6, 278.6

BANGKOK / Suvarnabhumi Intl (VTBS)

**ILS or LOC y RWY19R
CAT II**



MISSED APPROACH:

Climb straight ahead to SVB VOR, turn right on R-215 SVB VOR to 3000 FT and hold at 7 DME SVB VOR Fix or as directed by ATC.

(If unable to reach 3000 FT at R-215 / 7D SVB, continue climb in the holding pattern.)

VOR/DME SVB

LOC/DME ISWN

MAPt (LOC only)
3.6D ISWN

(IAF) ROBBY
8.8D SVB
8.2D ISWN

TA 11000

3000 (2995)

2000 (1995)

RDH 50 FT

ELEV 5 FT (THR RWY19R)

NM FM THR RWY19R
DME FM ISWN

D0.0

0 NM
D2.1

5 NM

10 NM

OCA/H		A	B	C	D	ISWN DME	MAPt	4.0	5.0	6.0	7.0	8.0	FAF
Straight-in Approach	CAT I	205 (200)				Altitudes	620	650	970	1290	1610	1920	2000
	CAT II	105 (100)				Speed / Knots			100	120	140	160	180
LOC only		620 (615)				FAF - MAPt 4.6 NM			2 : 45	2 : 18	1 : 58	1 : 43	1 : 32
Circling (OCH AAL)		800 (795)	900 (895)		Rate of descent (ft/min)			530	640	745	850	955	

CHANGE: REALIGNMENT. MISSED APPROACH INSTRUCTION.