

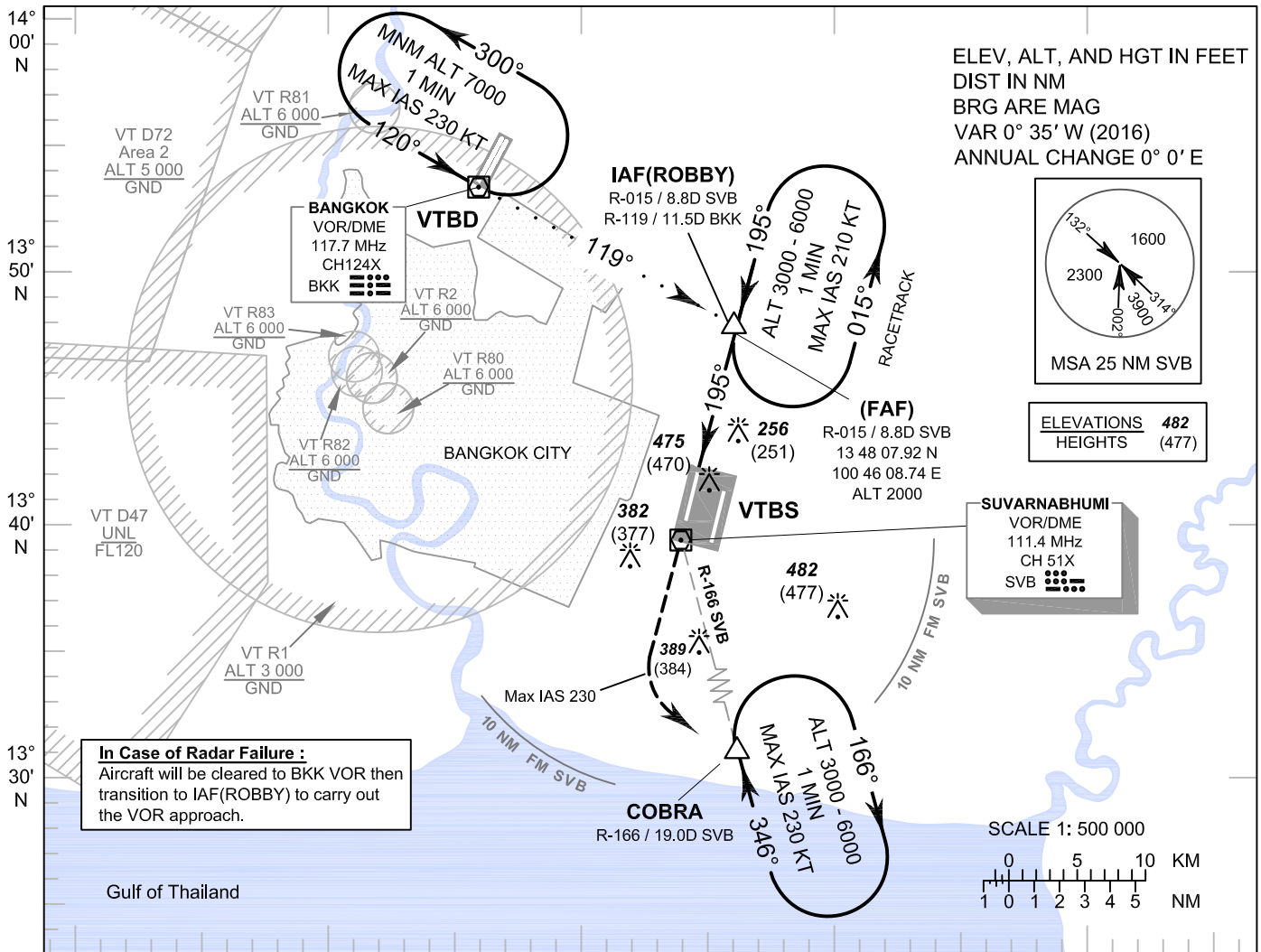
**INSTRUMENT
APPROACH
CHART - ICAO**

**AERODROME ELEV 5 FT
HEIGHTS RELATED TO
AERODROME ELEV**

BANGKOK / Suvarnabhumi Intl (VTBS)

VOR RWY19R

APP	:	119.1, 262.5
	:	120.3, 262.5
	:	121.7, 262.5
	:	122.35, 262.5
	:	124.35, 262.5
	:	125.2, 262.5
ARR	:	121.1
	:	126.3
TWR	:	118.2, 274.5
	:	119.0
ATIS	:	133.6, 278.6

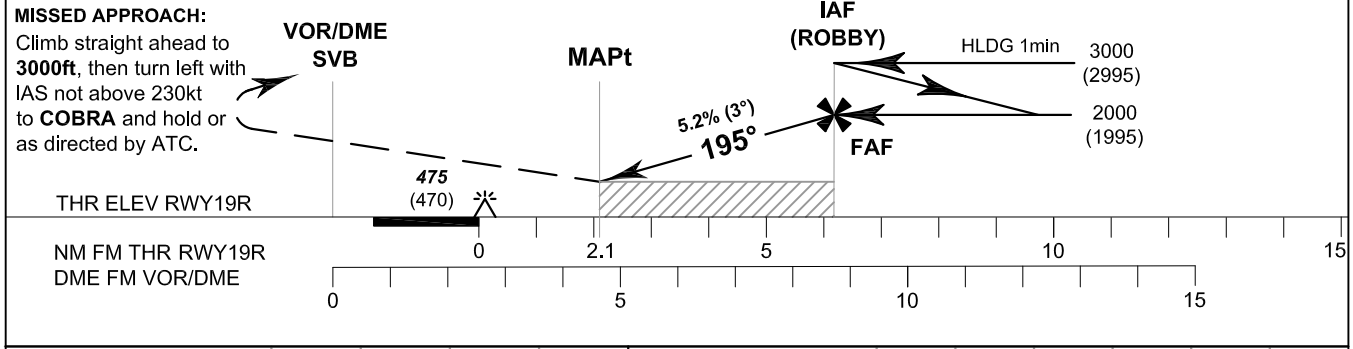


In Case of Radar Failure :
Aircraft will be cleared to BKK VOR then transition to IAF(ROBBY) to carry out the VOR approach.

100° 20' E 100° 30' E 100° 40' E 100° 50' E 101° 00' E

VOR/DME	5D	6D	7D
ALT (HGT) 3° APCH	790 (785)	1100 (1095)	1420 (1415)

TA 11000



OCA/H	A	B	C	D	Ground Speed	kt	100	120	140	160	180
Straight-in Approach	730 (725)				FAF-MAPt 4.0 NM	m:s	2 : 24	2 : 00	1 : 43	1 : 30	1 : 20
Circling (OCH AAL)	800 (795)	900 (895)			Rate of descent	ft/min	527	632	737	843	948

CHANGE: DME, RADIALS, MSA, MAG VAR, FREQUENCIES.
VT R82 AND VT R83 ADDED.