

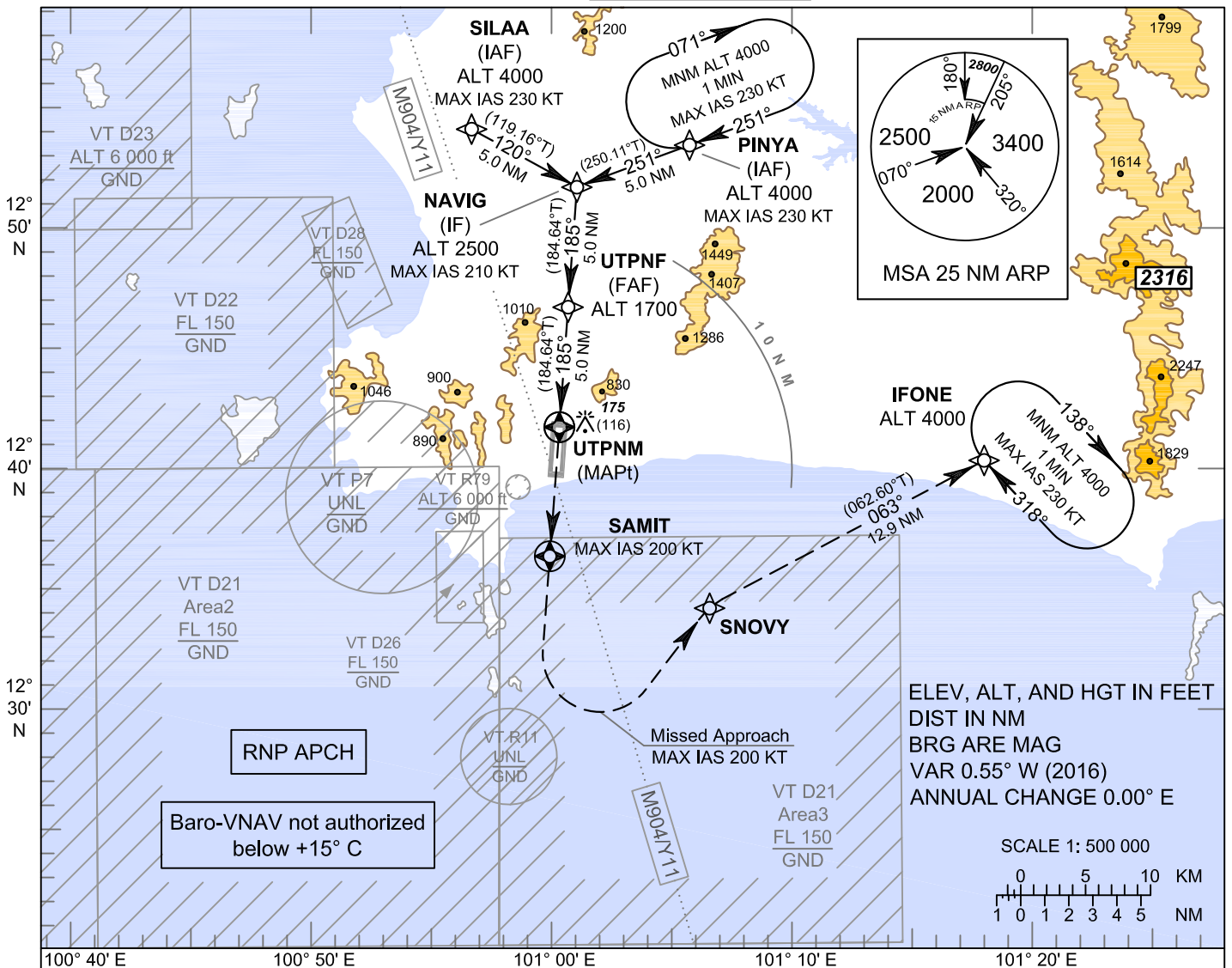
**INSTRUMENT
APPROACH
CHART - ICAO**

**AERODROME ELEV 59 FT
HEIGHTS RELATED TO
AERODROME ELEV**

APP : 119.7 , 134.5
: 238.3 , 273.3
TWR : 118.1 , 118.3
: 227.0
GND : 121.9 , 275.8

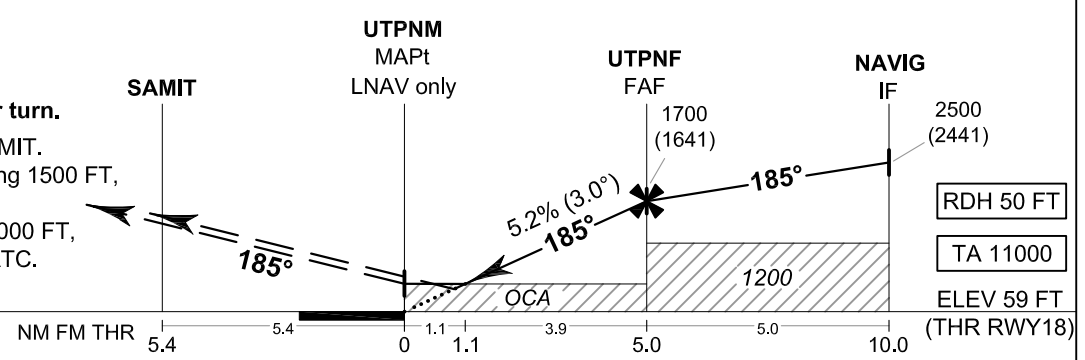
**RAYONG / U-TAPAO RAYONG
PATTAYA INTL (VTBU)**

RNAV (GNSS) RWY18



CAUTION: Aircraft shall avoid entering VT R11

MISSED APPROACH:
No turn before MAPt.
Speed restricted to
MAX IAS 200 KT until after turn.
Climb on course 185° to SAMIT.
After SAMIT and ALT passing 1500 FT,
turn left direct to SNOVY,
then proceed to IFONE at 4000 FT,
and hold or as directed by ATC.



OCA/H	A	B	C	D	NM to NEXT WPT	1.1 NM	2 NM	3 NM	4 NM	FAF		
LNAV / VNAV	400 (341)				Altitude (Height)	460 (401)	740 (681)	1055 (996)	1375 (1316)	1700 (1641)		
LNAV	460 (401)				Ground speed	knot	70	90	100	120	140	160
Circling (OCH AAL)	1200 (1141)	1450 (1391)			Rate of descent FAF-MAPt 5.2%	(ft/min)	369	474	527	632	737	843