

**STANDARD DEPARTURE CHART-  
INSTRUMENT (SID) - ICAO**

TRANSITION ALTITUDE  
11000 FT

**SPEED RESTRICTION**  
MAX IAS 250 KT AT OR  
BELOW ALT 10000 FT  
UNLESS OTHERWISE  
AUTHORIZED BY ATC.

APP : 119.1, 262.5  
: 120.3, 262.5  
: 121.7, 262.5  
: 122.35, 262.5  
: 124.35, 262.5  
: 125.2, 262.5  
ARR : 121.1  
: 126.3  
TWR : 118.2, 274.5  
: 119.0  
ATIS : 133.6, 278.6

**BANGKOK/Suvarnabhumi Intl (VTBS)  
RNAV RWY01L**

BATOK3H GORSI3H HHN3H  
KASNI3H KIGOB3H REGOS3H  
RYN3H SABIS3H UKERA3H

ELEV, ALT IN FEET  
DIST IN NM  
BRG ARE MAG  
VAR 0° 35' W (2016)  
ANNUAL CHANGE 0° 0' E

**INITIAL CLIMB CLEARANCE 6000 FT  
OR AS DIRECTED BY ATC.**

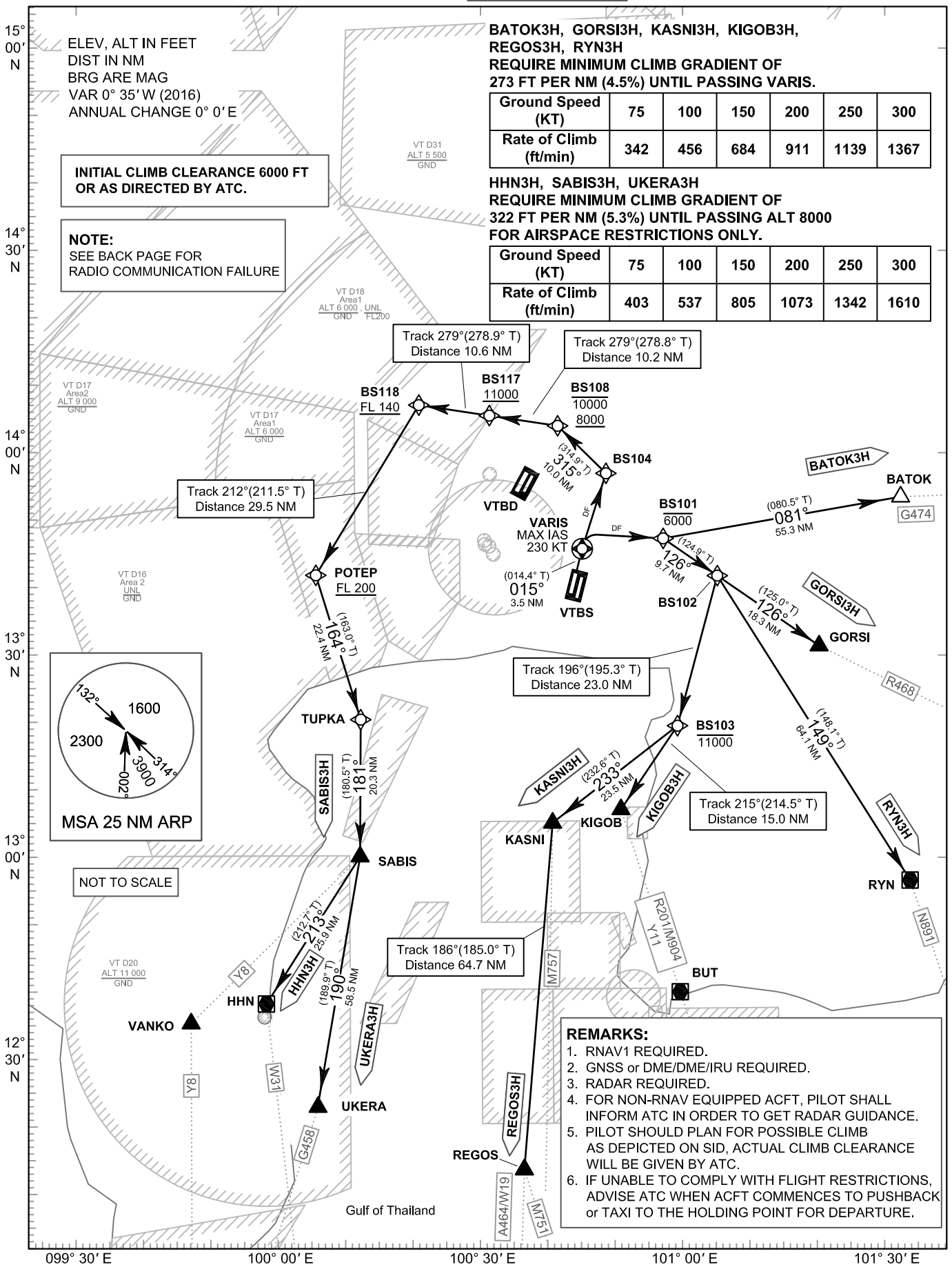
**NOTE:**  
SEE BACK PAGE FOR  
RADIO COMMUNICATION FAILURE

**BATOK3H, GORSI3H, KASNI3H, KIGOB3H,  
REGOS3H, RYN3H  
REQUIRE MINIMUM CLIMB GRADIENT OF  
273 FT PER NM (4.5%) UNTIL PASSING VARIS.**

<b>Ground Speed (KT)</b>	75	100	150	200	250	300
<b>Rate of Climb (ft/min)</b>	342	456	684	911	1139	1367

**HHN3H, SABIS3H, UKERA3H  
REQUIRE MINIMUM CLIMB GRADIENT OF  
322 FT PER NM (5.3%) UNTIL PASSING ALT 8000  
FOR AIRSPACE RESTRICTIONS ONLY.**

<b>Ground Speed (KT)</b>	75	100	150	200	250	300
<b>Rate of Climb (ft/min)</b>	403	537	805	1073	1342	1610



**REMARKS:**

1. RNAV1 REQUIRED.
2. GNSS or DME/DME-IRU REQUIRED.
3. RADAR REQUIRED.
4. FOR NON-RNAV EQUIPPED ACFT, PILOT SHALL INFORM ATC IN ORDER TO GET RADAR GUIDANCE.
5. PILOT SHOULD PLAN FOR POSSIBLE CLIMB AS DEPICTED ON SID, ACTUAL CLIMB CLEARANCE WILL BE GIVEN BY ATC.
6. IF UNABLE TO COMPLY WITH FLIGHT RESTRICTIONS, ADVISE ATC WHEN ACFT COMMENCES TO PUSHBACK or TAXI TO THE HOLDING POINT FOR DEPARTURE.

CHANGE: NEW PROCEDURES.