

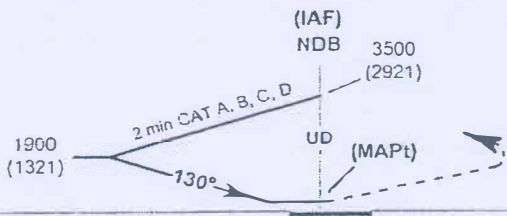
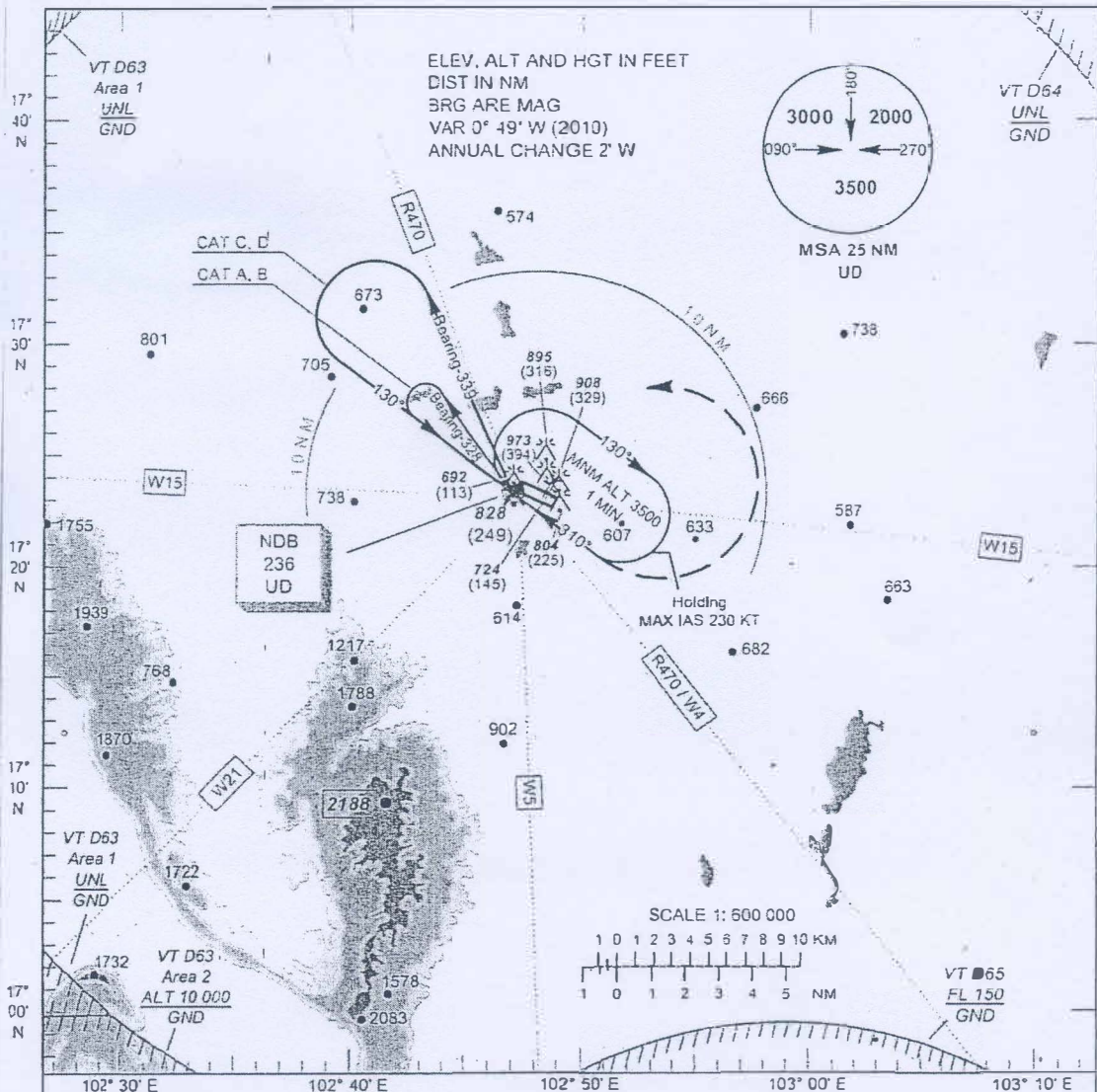
INSTRUMENT  
APPROACH  
CHART - ICAO

AERODROME ELEV 579 FT  
HEIGHTS RELATED TO  
AERODROME ELEV

APP : 126.2, 265.9  
TWR : 122.5, 355.4  
GND : 121.9, 275.8

UDON THANI / Udon thani (VTUD)

NDB RWY12



TA 11000  
ELEV 579 FT  
(THR RWY 12)

MISSED APPROACH: No turn before MAPt. Climb on Bearing-130 until 1700 (1121) FT then turn left to UD NDB at 3500 (2921) FT and hold or as directed by ATC.

OCA/H	A	B	C	D
Straight - in Approach		1130 (551)		
Circling* (OCH AAL)		1300 (721)		
*FOR CIRCLING RESTRICTIONS SEE VERSO				