

## VTUV AD 2.1 AERODROME LOCATION INDICATOR AND NAME

## VTUV - ROI ET / ROI ET AIRPORT

## VTUV AD 2.2 AERODROME GEOGRAPHICAL AND ADMINISTRATIVE DATA

1	ARP coordinates and site at AD	160700.34N 1034625.67E Centre of RWY 1050 M. from THR RWY 18
2	Direction and distance from (city)	19 KM E from city
3	Elevation/Reference temperature	451 FT /28°C
4	Geoid Undulation at AD ELEV PSN	NIL
5	MAG VAR/Annual change	0.82°W(2016) /0.02°W
6	AD Administration, address, telephone, telefax, telex, AFS	Director of Roi Et Airport Roi Et Airport, Roi Et-Phonthong Road, Nongphok, Thawatburi, Roi Et, 45170 Thailand Tel: +664 351 8246-8 Fax: +664 351 8253 AFS: VTUVYDYX
7	Types of traffic permitted (IFR/VFR)	IFR/VFR
8	Remarks	Operator: Department of Airports

## VTUV AD 2.3 OPERATIONAL HOURS

1	Aerodrome Operator	2300-1400
2	Customs and immigration	NIL
3	Health and sanitation	NIL
4	AIS Briefing Office	0100-0900 (Mon-Fri)*
5	ATS Reporting Office (ARO)	2200-1500
6	MET Briefing Office	NIL
7	ATS	2300-1100
8	Fuelling	NIL
9	Handling	NIL
10	Security	NIL
11	De-icing	NIL
12	Remarks	*Other this period and holiday 3 HRS PN to ATC

## VTUV AD 2.4 HANDLING SERVICES AND FACILITIES

1	Cargo-handling facilities	NIL
2	Fuel/oil types	NIL
3	Fuelling facilities/capacity	NIL
4	De-icing facilities	NIL
5	Hangar space for visiting aircraft	NIL
6	Repair facilities for visiting aircraft	NIL
7	Remarks	NIL

**VTUV AD 2.5 PASSENGER FACILITIES**

1	Hotels	In the city
2	Restaurants	In the city
3	Transportation	Taxi and car hire from the airport
4	Medical facilities	Hospital in the city
5	Bank and Post Office	Bank and Post office in the city
6	Tourist Office	In the city
7	Remarks	NIL

**VTUV AD 2.6 RESCUE AND FIRE FIGHTING SERVICES**

1	AD category for fire fighting	Category 6
2	Rescue equipment	Yes
3	Capability for removal of disabled aircraft	NIL
4	Remarks	NIL

**VTUV AD 2.7 SEASONAL AVAILABILITY - CLEARING**

1	Types of clearing equipment	NIL
2	Clearance priorities	NIL
3	Remarks	The aerodrome is available all seasons.

**VTUV AD 2.8 APRONS, TAXIWAYS AND CHECK LOCATIONS/POSITIONS DATA**

1	Apron surface and strength	Surface: Concrete Strength: PCN 45/R/C/X/T
2	Taxiway width, surface and strength	Width: 23 M Surface: Concrete and asphalt Strength: PCN 42/F/C/X/T
3	Altimeter checkpoint location and elevation	NIL
4	VOR checkpoints	NIL
5	INS checkpoints	NIL
6	Remarks	NIL

**VTUV AD 2.9 SURFACE MOVEMENT GUIDANCE AND CONTROL SYSTEM AND MARKINGS**

1	Use of aircraft stand ID signs, TWY guide lines and visual docking/parking guidance system of aircraft stands	NIL
2	RWY and TWY markings and LGT	RWY and TWY: Marked and lighted
3	Stop bars	NIL
4	Remarks	NIL

VTUV AD 2.10 AERODROME OBSTACLES

In approach/TKOF areas			In circling areas and at AD		Remarks
1			2		3
RWY/Area affected	Obstacle type Elevation Markings/LGT	Coordinates	Obstacle type Elevation Markings/LGT	Coordinates	
a	b	c	a	b	
NIL	NIL	NIL	NIL	NIL	NIL

VTUV AD 2.11 METEOROLOGICAL INFORMATION PROVIDED

1	Associated MET Office	Aeronautical Meteorological Station-Roi Et, Lower Northeastern Meteorological Center, Thai Meteorological Department (TMD)
2	Hours of service MET Office outside hours	2200-1400 NIL
3	Office responsible for TAF preparation Periods of validity	Supply TAF from Lower Northeastern Meteorological Center 24 HR
4	Type of landing forecast Interval of issuance	TREND 1 HR
5	Briefing/consultation provided	Personal Consultation Tel: +664 351 9886 ext. 7408
6	Flight documentation Language(s) used	NIL
7	Charts and other information available for briefing or consultation	S, U85, Daily Weather Forecast, satellite and radar images
8	Supplementary equipment available for providing information	Automated Weather Observation System (AWOS)
9	ATS units provided with information	Roi Et TWR
10	Additional information (limitation of service, etc.)	NIL

VTUV AD 2.12 RUNWAY PHYSICAL CHARACTERISTICS

Designations RWY NR	TRUE BRG	Dimensions of RWY(M)	Strength (PCN) and surface of RWY and SWY	THR coordinates RWY end coordinates THR geoid undulation	THR elevation and highest elevation of TDZ of precision APP RWY
1	2	3	4	5	6
18	182.69°	2100x45	PCN 42/F/D/X/T Concrete and asphalt	160734.53N 1034627.20E	THR451 FT TDZ 451 FT
36	002.69°	2100x45	PCN 42/F/D/X/T Concrete and asphalt	160626.14N 1034624.15E	THR451 FT TDZ 451 FT

Slope of RWY-SWY	SWY dimensions (M)	CWY dimensions (M)	Strip dimensions (M)	OFZ	Remarks
7	8	9	10	11	12
0%	60x60	NIL	2340x300	NIL	NIL
0%	60x60	NIL	2340x300	NIL	NIL

VTUV AD 2.13 DECLARED DISTANCES

RWY Designator	TORA (M)	TODA (M)	ASDA (M)	LDA (M)	Remarks
1	2	3	4	5	6
18	2100	2100	2160	2100	NIL
36	2100	2100	2160	2100	NIL

VTUV AD 2.14 APPROACH AND RUNWAY LIGHTING

RWY Designator	APCH LGT type LEN INTST	THR LGT colour WBAR	VASIS (MEHT) PAPI	TDZ, LGT LEN	RWY Centre Line LGT Length, spacing, colour, INTST	RWY edge LGT LEN, spacing, colour INTST	RWY End LGT colour WBAR	SWY LGT LEN (M) colour	Remarks
1	2	3	4	5	6	7	8	9	10
18	RTIL	Green	PAPI LEFT 3° (50.58 FT)	NIL	NIL	2100 M 60 M White, LIH	Red	NIL	NIL
36	SALS 420 M	Green	PAPI LEFT 3° (50.58 FT)	NIL	NIL	2100 M 60 M White, LIH	Red	NIL	NIL

VTUV AD 2.15 OTHER LIGHTING, SECONDARY POWER SUPPLY

1	ABN/IBN location, characteristics and hours of operation	ABN: At tower building FLG W G EV 7 SEC
2	LDI location and LGT Anemometer location and LGT	NIL
3	TWY edge and centre line lighting	EDGE: All taxiways
4	Secondary power supply/switch-over time	Secondary power supply at tower and air field lighting (AFL). Switch-over time: 15 SEC
5	Remarks	NIL

VTUV AD 2.16 HELICOPTER LANDING AREA

1	Coordinates TLOF or THR of FATO Geoid undulation	NIL
2	TLOF and/or FATO elevation M/FT	NIL
3	TLOF and FATO area dimensions, surface, strength, marking	NIL
4	True and MAG BRG of FATO	NIL
5	Declared distance available	NIL
6	APP and FATO lighting	NIL
7	Remarks	NIL

## VTUV AD 2.17 ATS AIRSPACE

1	Designation and lateral limits	A circle of 5 NM radius centred on Roi Et DVOR/DME (160700.59N 1034619.45E)
2	Vertical limits	2000 FT/AGL
3	Airspace classification	C
4	ATS unit call sign Language(s)	Roi Et Tower English, Thai
5	Transition altitude	11000 FT
6	Remarks	NIL

## VTUV AD 2.18 ATS COMMUNICATION FACILITIES

Service designation	Call sign	Frequency	Hours of operation	Remarks
1	2	3	4	5
APP	Roi Et Approach	125.4 MHZ	2300-1100	NIL
TWR	Roi Et Tower	119.75 MHZ 236.6 MHZ	2300-1100	
ATIS		319 KHZ	2300-1100	

## VTUV AD 2.19 RADIO NAVIGATION AND LANDING AIDS

Type of aid, MAG VAR CAT of ILS/MLS (For VOR/ILS/MLS, give declination)	ID	Frequency	Hours of operation	Position of transmitting antenna coordinates	Elevation of DME transmitting antenna	Remarks
1	2	3	4	5	6	7
NDB	RE	319 KHZ	H24	160638.46N 1034641.60E		
DVOR/DME	ROT	111.2 MHZ CH 49X	H24	160700.59N 1034619.45E		
LOC RWY36 ILS CAT I	IROT	109.5 MHZ	H24	160744.28N 1034627.64E		LOC: Designated operation coverage 18 NM, ALT 6700 FT AMSL
GP		332.6 MHZ	H24	160635.76N 1034620.54E		GP: 3 GEG, RDH 50 FT
DME	IROT	CH 32X (109.5 MHZ)	H24	160744.36N 1034625.22E	448FT	DME: Paired with LOC FREQ.

## VTUV AD 2.20 LOCAL AERODROME REGULATIONS

All aircraft code letter C and higher are not allowed to turn on runway. The turn shall be made on the runway turn pad only. Any breach done by the aircraft operator shall be recorded and reported to The Civil Aviation Authority of Thailand / The Headquarter of that operator shall be liable for the compensation caused by such violation.

## VTUV AD 2.21 NOISE ABATEMENT PROCEDURES

NIL

## VTUV AD 2.22 FLIGHT PROCEDURES

NIL

**VTUV AD 2.23 ADDITIONAL INFORMATION**

- Birds concentration on and in the vicinity of an Aerodrome.

**VTUV AD 2.24 CHARTS RELATED TO AN AERODROME**

<b>Chart name</b>	<b>Page</b>
Aerodrome Chart - ICAO	AD 2-VTUV-2-1
Instrument Approach Chart - ICAO - VOR/DME RWY 18	AD 2-VTUV-8-1
Instrument Approach Chart - ICAO - VOR/DME RWY 36	AD 2-VTUV-8-3

**AERODROME CHART - ICAO**

16 07 00 N  
103 46 26 E

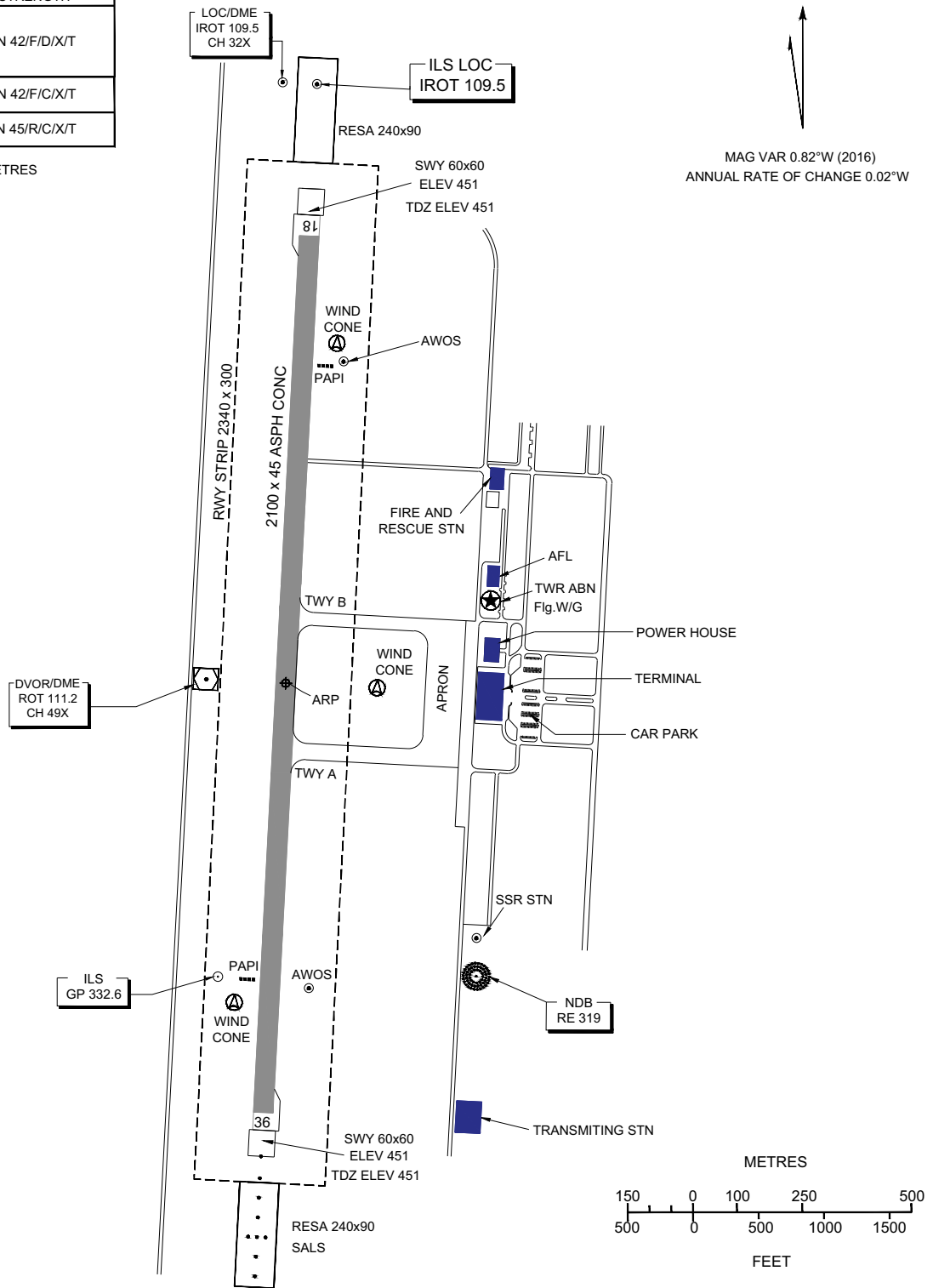
**ELEV 451 FT**

**TWR 119.75  
236.60**

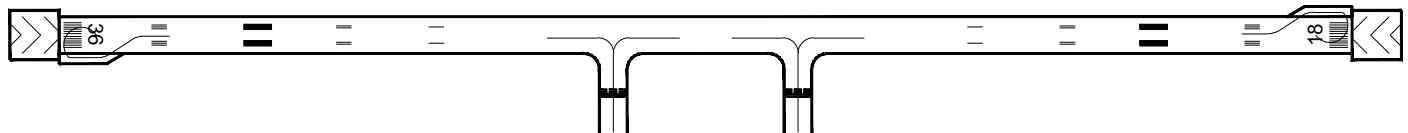
**ROI ET / Roi Et**

RWY	DIRECTION (TRUE BRG)	THR	BEARING STRENGTH
18	182.69	16 07 34.53 N 103 46 27.20 E	PCN 42/F/D/X/T
36	02.69	16 06 26.14 N 103 46 24.15 E	
TAXIWAY A,B			PCN 42/F/C/X/T
APRON			PCN 45/R/C/X/T

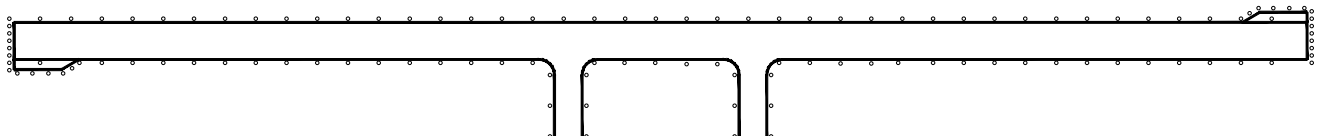
ELEVATIONS IN FEET AND DIMENSIONS IN METRES  
BEARING ARE MAGNETIC



MARKING AIDS RWY 18/36 AND EXIT TWY



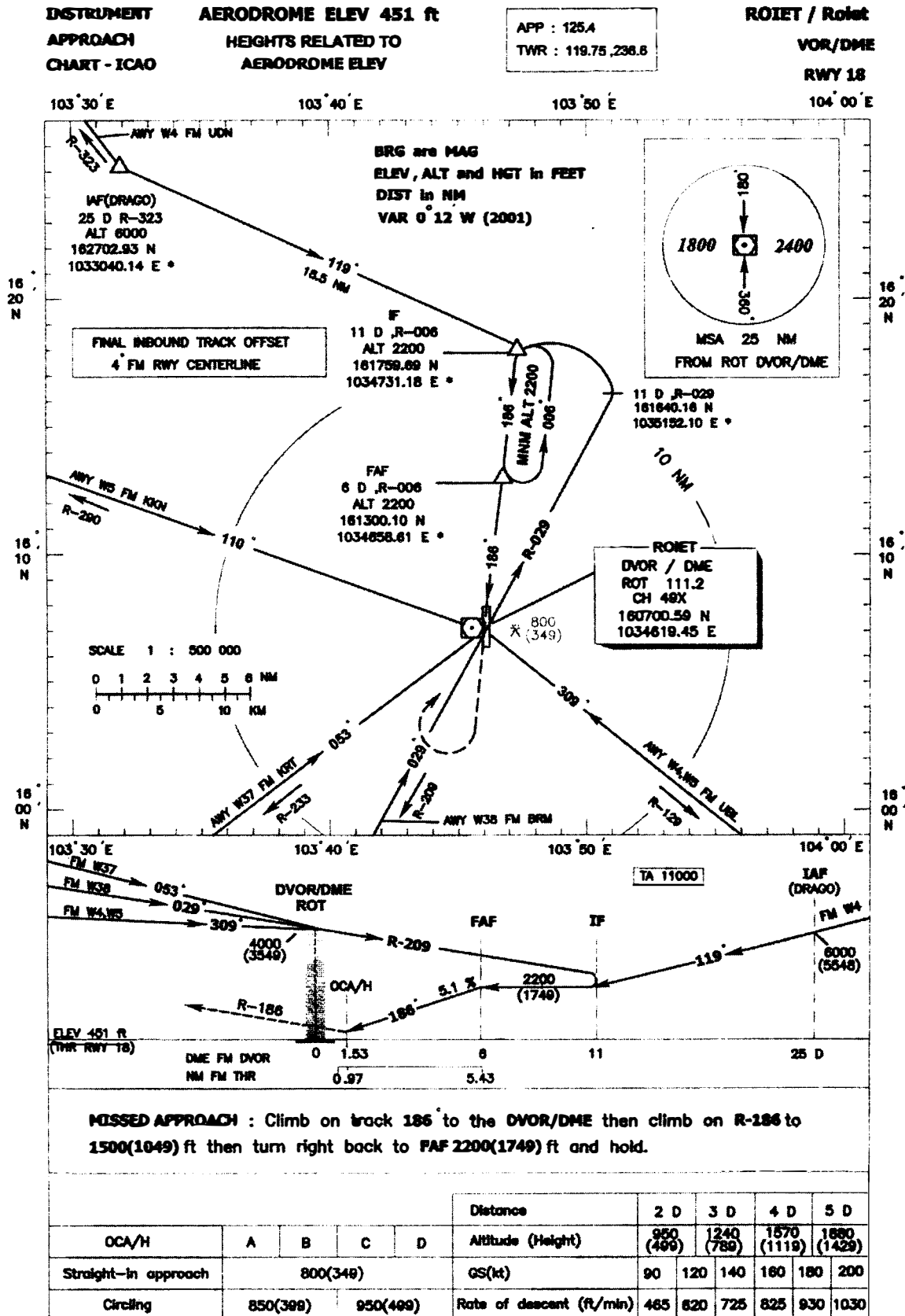
LIGHTING AIDS RWY 18/36 AND EXIT TWY



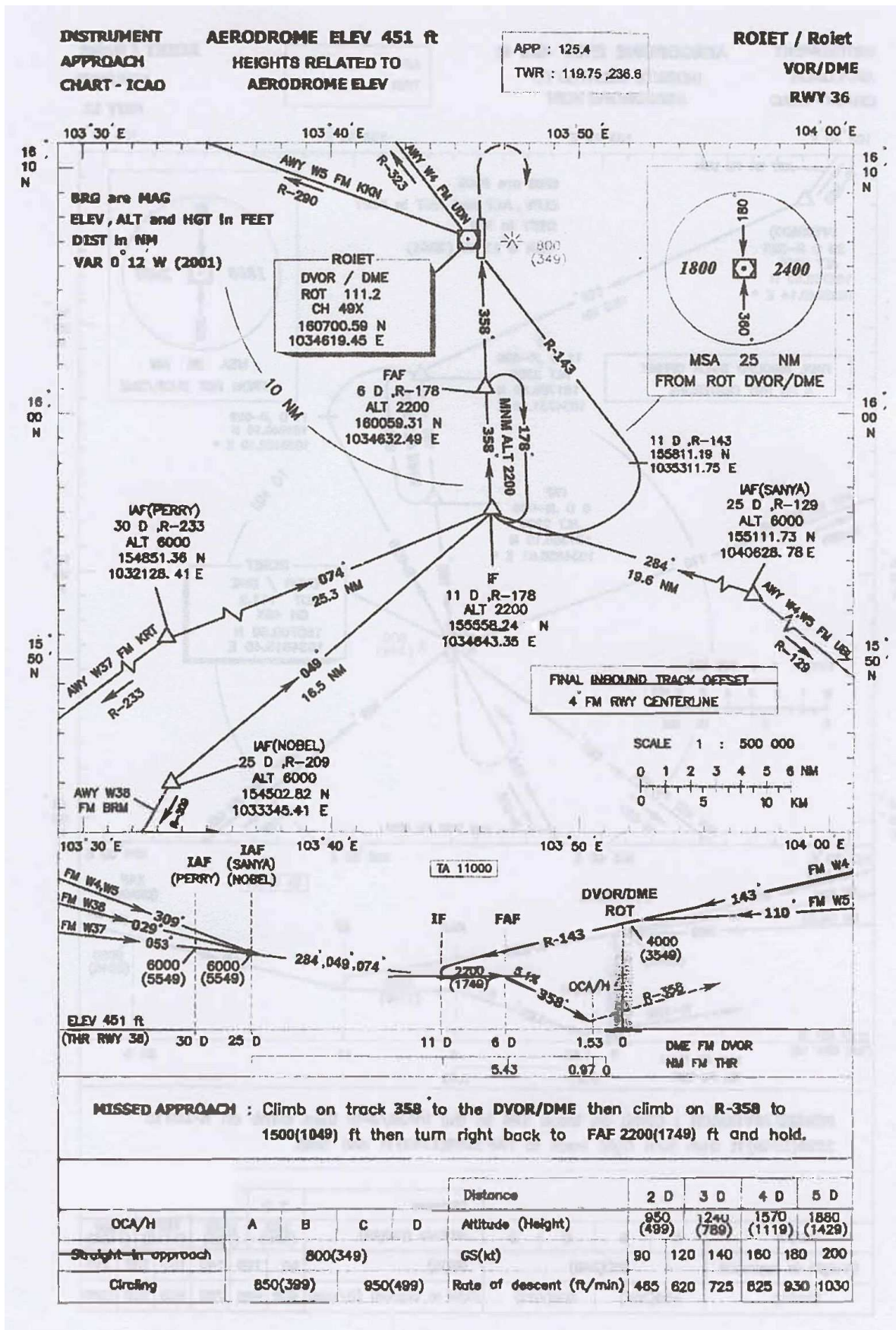
CHANGE : REVISED CHART. MAG VAR. ANNUAL RATE OF CHANGE. AWOS. PAPI. WIND CONE. TABULAR INFO.

**INTENTIONALLY BLANK**





**INTENTIONALLY BLANK**



**INTENTIONALLY BLANK**