

VTCP AD 2.1 AERODROME LOCATION INDICATOR AND NAME

VTCP - PHRAE / PHRAE AIRPORT

VTCP AD 2.2 AERODROME GEOGRAPHICAL AND ADMINISTRATIVE DATA

| | | |
|---|--|--|
| 1 | ARP coordinates and site at AD | 180754.17N 1000952.62E |
| 2 | Direction and distance from (city) | 3 KM E, from city |
| 3 | Elevation/Reference temperature | 538 FT/27°C |
| 4 | Geoid Undulation at AD ELEV PSN | NIL |
| 5 | MAG VAR/Annual change | 0.80°W (2016)/0.00°E |
| 6 | AD Administration, address, telephone, telefax, telex, AFS | Director of Phrae Airport Phrae Airport 72 Chohae Road, Tambon Nachack Amphoe Muangphrae, Phrae Province 54000 Thailand Tel: +665 451 1184 +665 452 2706 Fax: +665 452 2705 AFS: VTCPYDYX |
| 7 | Types of traffic permitted (IFR/VFR) | IFR/VFR |
| 8 | Remarks | Operator: Department of Airports |

VTCP AD 2.3 OPERATIONAL HOURS

| | | |
|----|----------------------------|-----------|
| 1 | Aerodrome Operator | 2300-1500 |
| 2 | Customs and immigration | NIL |
| 3 | Health and sanitation | NIL |
| 4 | AIS Briefing Office | HJ |
| 5 | ATS Reporting Office (ARO) | NIL |
| 6 | MET Briefing Office | NIL |
| 7 | ATS | 2300-1100 |
| 8 | Fuelling | NIL |
| 9 | Handling | NIL |
| 10 | Security | NIL |
| 11 | De-icing | NIL |
| 12 | Remarks | NIL |

VTCP AD 2.4 HANDLING SERVICES AND FACILITIES

| | | |
|---|---|-----|
| 1 | Cargo-handling facilities | NIL |
| 2 | Fuel/oil types | NIL |
| 3 | Fuelling facilities/capacity | NIL |
| 4 | De-icing facilities | NIL |
| 5 | Hangar space for visiting aircraft | NIL |
| 6 | Repair facilities for visiting aircraft | NIL |
| 7 | Remarks | NIL |

VTCP AD 2.5 PASSENGER FACILITIES

| | | |
|---|----------------------|-------------|
| 1 | Hotels | In the city |
| 2 | Restaurants | In the city |
| 3 | Transportation | NIL |
| 4 | Medical facilities | NIL |
| 5 | Bank and Post Office | NIL |
| 6 | Tourist Office | NIL |
| 7 | Remarks | NIL |

VTCP AD 2.6 RESCUE AND FIRE FIGHTING SERVICES

| | | |
|---|---|------------|
| 1 | AD category for fire fighting | Category 5 |
| 2 | Rescue equipment | Yes |
| 3 | Capability for removal of disabled aircraft | NIL |
| 4 | Remarks | NIL |

VTCP AD 2.7 SEASONAL AVAILABILITY - CLEARING

| | | |
|---|-----------------------------|---|
| 1 | Types of clearing equipment | NIL |
| 2 | Clearance priorities | NIL |
| 3 | Remarks | The aerodrome is available all seasons. |

VTCP AD 2.8 APRONS, TAXIWAYS AND CHECK LOCATIONS/POSTIONS DATA

| | | |
|---|---|--|
| 1 | Apron surface and strength | Surface: Concrete and asphalt Strength: PCN 20/F/C/X/T |
| 2 | Taxiway width, surface and strength | Width: 15 M Surface: Concrete and asphalt Strength: PCN 20/F/C/X/T |
| 3 | Altimeter checkpoint location and elevation | NIL |
| 4 | VOR checkpoints | NIL |
| 5 | INS checkpoints | NIL |
| 6 | Remarks | NIL |

VTCP AD 2.9 SURFACE MOVEMENT GUIDANCE AND CONTROL SYSTEM AND MARKINGS

| | | |
|---|---|-----------------------------------|
| 1 | Use of aircraft stand ID signs, TWY guide lines and visual docking/parking guidance system of aircraft stands | NIL |
| 2 | RWY and TWY markings and LGT | RWY and TWY: Markings and lighted |
| 3 | Stop bars | NIL |
| 4 | Remarks | NIL |

VTCP AD 2.10 AERODROME OBSTACLES

| In approach/TKOF areas | | | In circling areas and at AD | | Remarks |
|------------------------|--|-------------------|--|-------------|---------|
| 1 | | | 2 | | |
| RWY/Area affected | Obstacle type Elevation Markings/LGT | Coordinates | Obstacle type Elevation Markings/LGT | Coordinates | |
| a | b | c | a | b | |
| - | Radio mast HGT 75 M painted red/white LGTD on top | 10840N 1000850E | NIL | NIL | NIL |
| - | Radio mast HGT 80 M | 1881036N 1001116E | NIL | NIL | NIL |

VTCP AD 2.11 METEOROLOGICAL INFORMATION PROVIDED

| | | |
|----|--|---|
| 1 | Associated MET Office | Aeronautical Meteorological Station-Phrae, Northern Meteorological Center, Thai Meteorological Department (TMD) |
| 2 | Hours of service MET Office outside hours | 0000-1100 NIL |
| 3 | Office responsible for TAF preparation Periods of validity | Supply TAF from Northern Meteorological Center 24 HR |
| 4 | Type of landing forecast Interval of issuance | TREND 1 HR |
| 5 | Briefing/consultation provided | Personal Consultation Tel: +665 453 1307 ext. 4508 |
| 6 | Flight documentation Language(s) used | NIL |
| 7 | Charts and other information available for briefing or consultation | S, U85, Daily Weather Forecast, satellite and radar images |
| 8 | Supplementary equipment available for providing information | Automated Weather Observation System (AWOS) |
| 9 | ATS units provided with information | Phrae TWR |
| 10 | Additional information (limitation of service, etc.) | NIL |

VTCP AD 2.12 RUNWAY PHYSICAL CHARACTERISTICS

| Designations RWY NR | TRUE BRG | Dimensions of RWY(M) | Strength (PCN) and surface of RWY and SWY | THR coordinates RWY end coordinates THR geoid undulation | THR elevation and highest elevation of TDZ of precision APP RWY |
|------------------------|----------|-------------------------|---|--|---|
| 1 | 2 | 3 | 4 | 5 | 6 |
| 01 | 005.39° | 1500x30 | PCN 20/F/C/X/T Concrete and asphalt | 180731.41N 1000950.31E | THR 538 FT TDZ 538 FT |
| 19 | 185.39° | 1500x30 | PCN 20/F/C/X/T Concrete and asphalt | 180820.20N 1000955.27E | THR 535 FT TDZ 537 FT |

| Slope of RWY-SWY | SWY dimensions (M) | CWY dimensions (M) | Strip dimensions (M) | OFZ | Remarks |
|------------------|-----------------------|-----------------------|-------------------------|-----|---------|
| 7 | 8 | 9 | 10 | 11 | 12 |
| NIL | 75x30 | NIL | 1770x150 | NIL | NIL |

| Slope of RWY-SWY | SWY dimensions (M) | CWY dimensions (M) | Strip dimensions (M) | OFZ | Remarks |
|------------------|--------------------|--------------------|----------------------|-----|---------|
| 7 | 8 | 9 | 10 | 11 | 12 |
| NIL | 75x30 | NIL | 1770x150 | NIL | NIL |

VTCP AD 2.13 DECLARED DISTANCES

| RWY Designator | TORA (M) | TODA (M) | ASDA (M) | LDA (M) | Remarks |
|----------------|----------|----------|----------|---------|---------|
| 1 | 2 | 3 | 4 | 5 | 6 |
| 01 | 1500 | 1500 | 1575 | 1500 | NIL |
| 19 | 1500 | 1500 | 1575 | 1500 | NIL |

VTCP AD 2.14 APPROACH AND RUNWAY LIGHTING

| RWY Designator | APCH LGT type LEN INTST | THR LGT colour WBAR | VASIS (MEHT) PAPI | TDZ, LGT LEN | RWY Centre Line LGT Length, spacing, colour, INTST | RWY edge LGT LEN, spacing, colour INTST | RWY End LGT colour WBAR | SWY LGT LEN (M) colour | Remarks |
|----------------|-------------------------|---------------------|---------------------------|--------------|--|---|-------------------------|------------------------|---------|
| 1 | 2 | 3 | 4 | 5 | 6 | 7 | 8 | 9 | 10 |
| 01 | NIL | Green | PAPI Left 3° (44.98 FT) | NIL | NIL | 1500 M 55.56 M White, LIM | Red | 75 M Red | NIL |
| 19 | NIL | Green | PAPI Left 3.2° (45.77 FT) | NIL | NIL | 1500 M 55.56 M White, LIM | Red | 75 M Red | NIL |

VTCP AD 2.15 OTHER LIGHTING, SECONDARY POWER SUPPLY

| | | |
|---|--|--|
| 1 | ABN/IBN location, characteristics and hours of operation | ABN: At Tower Building FLG W G EV 7 SEC |
| 2 | LDI location and LGT Anemometer location and LGT | NIL |
| 3 | TWY edge and centre line lighting | EDGE: All TWY |
| 4 | Secondary power supply/switch-over time | Secondary power supply to all lighting at the airport Switch-over time: 15 SEC. |
| 5 | Remarks | Flares 2 HR PN |

VTCP AD 2.16 HELICOPTER LANDING AREA

| | | |
|---|---|-----|
| 1 | Coordinates TLOF or THR of FATO Geoid undulation | NIL |
| 2 | TLOF and/or FATO elevation M/FT | NIL |
| 3 | TLOF and FATO area dimensions, surface, strength, marking | NIL |
| 4 | True and MAG BRG of FATO | NIL |
| 5 | Declared distance available | NIL |
| 6 | APP and FATO lighting | NIL |
| 7 | Remarks | NIL |

VTCP AD 2.17 ATS AIRSPACE

| | | |
|---|-----------------------------------|--|
| 1 | Designation and lateral limits | A circle of 5 NM radius centred on Phrae DVOR/DME (180802.78N 1000958.35E) |
| 2 | Vertical limits | 2000 FT/AGL |
| 3 | Airspace classification | C |
| 4 | ATS unit call sign Language(s) | Phrae Tower English, Thai |
| 5 | Transition altitude | 11000 FT |
| 6 | Remarks | NIL |

VTCP AD 2.18 ATS COMMUNICATION FACILITIES

| Service designation | Call sign | Frequency | Hours of operation | Remarks |
|---------------------|----------------|--------------------------------------|--------------------|--|
| 1 | 2 | 3 | 4 | 5 |
| APP | Phrae Approach | 120.1 MHZ | 23:00-11:00 | *Emergency freq. |
| TWR | Phrae Tower | *121.5 MHZ 118.6 MHZ 236.6 MHZ | 23:00-11:00 | Primary Freq (Upper Side band), Secondary Freq (Upper Side band). |
| G/A/G | Phrae Radio | 6667 KHZ 5520 KHZ | 23:00-11:00 | |
| ATIS | | 340.0 KHZ | 23:00-11:00 | |

VTCP AD 2.19 RADIO NAVIGATION AND LANDING AIDS

| Type of aid, MAG VAR CAT of ILS/MLS (For VOR/ILS/ MLS, give VAR) | ID | Frequency | Hours of operation | Position of transmitting antenna coordinates | Elevation of DME transmitting antenna | Remarks |
|---|----|-----------|--------------------|--|---------------------------------------|--|
| 1 | 2 | 3 | 4 | 5 | 6 | 7 |
| NDB | PR | 340KHZ | H24 | 180746.14N 1000940.91E | | Out put 400 watts NDB unusable due to excessive needle swing, bearing -040° -360° counter clock wise altitude below 7000 FT -359° -259° counter clock wise altitude below 6000 FT -260° -199° counter clock wise altitude below 8000 FT -200° -179° counter clock wise altitude below 5000 FT -180° -039° counter clock wise altitude below 8000 FT |

| Type of aid, MAG VAR CAT of ILS/MLS (For VOR/ILS/ MLS, give VAR) | ID | Frequency | Hours of operation | Position of transmitting antenna coordinates | Elevation of DME transmitting antenna | Remarks |
|--|-----|-------------------|-----------------------|---|--|---|
| 1 | 2 | 3 | 4 | 5 | 6 | 7 |
| DVOR/DME | PAE | 111.8MHZ CH55X | H24 | 180802.78N 1000958.35E | | DVOR/DME restriction due to mountainous terrain surround DVOR/DME station coverage check does not provide adequate signal to 40 NM at the required altitude in various areas as follow: - RDL 055-080 DEG at 40 NM ALT should not below 9 000 FT. - RDL 081-160 DEG at 40 NM ALT should not below 11 000 FT. - RDL 161-180 DEG at 40 NM ALT should not below 8 000 FT. - RDL 181-350 DEG at 40 NM ALT should not below 6 000 FT. - RDL 351-054 DEG at 40 NM ALT should not below 6 500 FT. |

VTCP AD 2.20 LOCAL AERODROME REGULATIONS

NIL

VTCP AD 2.21 NOISE ABATEMENT PROCEDURES

NIL

VTCP AD 2.22 FLIGHT PROCEDURES

NIL

VTCP AD 2.23 ADDITIONAL INFORMATION

NIL

VTCP AD 2.24 CHARTS RELATED TO AN AERODROME

| Chart name | Page |
|---|---------------|
| Aerodrome Chart - ICAO | AD 2-VTCP-2-1 |
| Instrument Approach Chart - ICAO - RNAV (GNSS) RWY 01 | AD 2-VTCP-8-1 |
| Instrument Approach Chart - ICAO - RNAV (GNSS) RWY 01 (Tabular description) | AD 2-VTCP-8-2 |

AERODROME CHART - ICAO

18 07 54 N
100 09 53 E

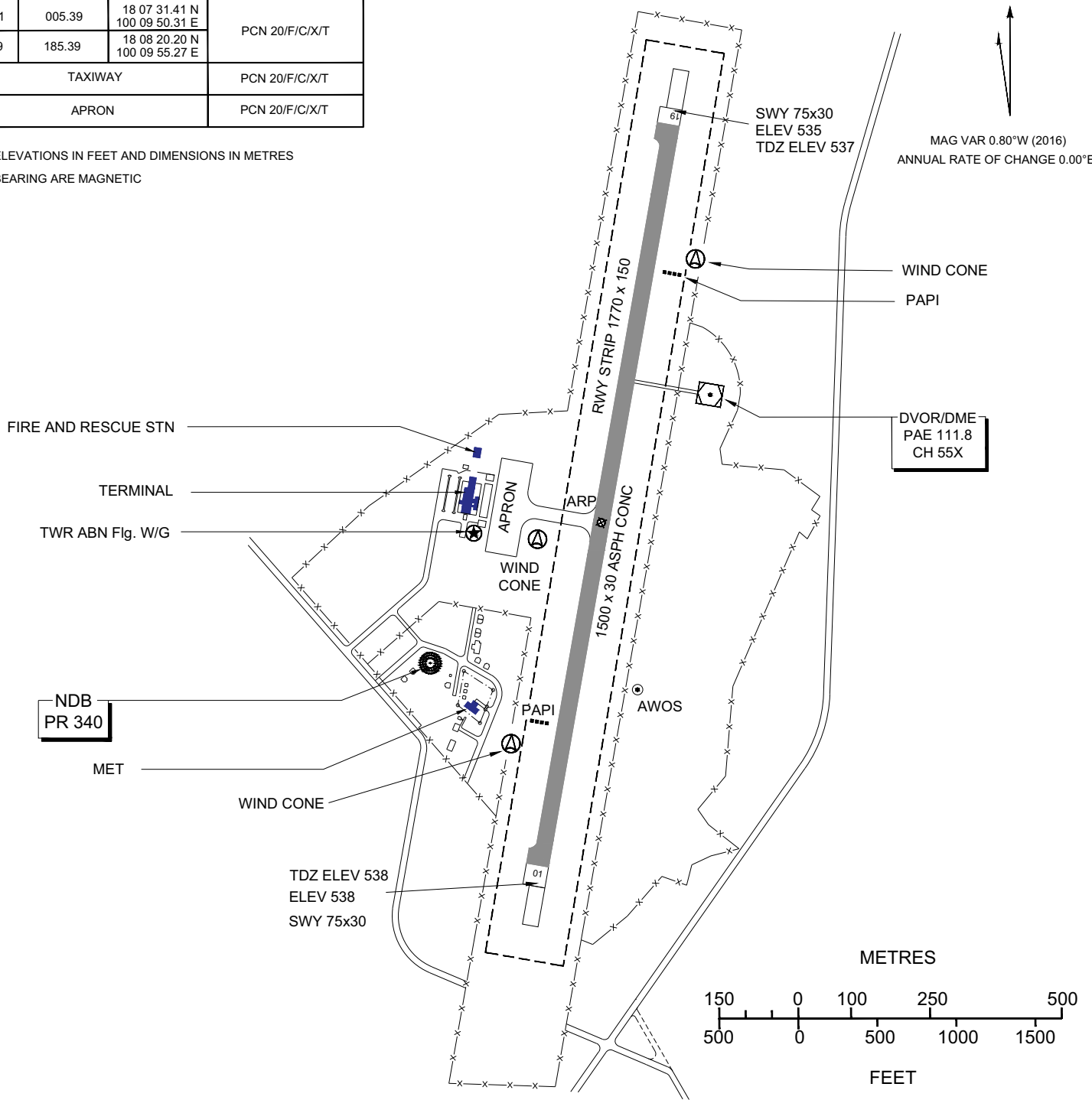
ELEV 538 FT

**TWR 118.60
236.60**

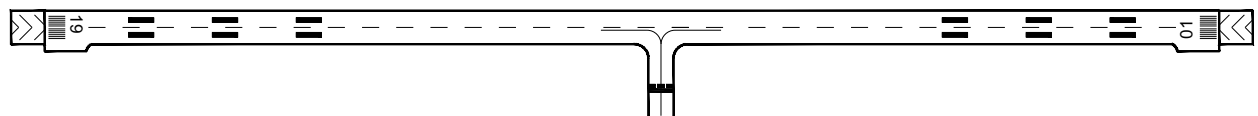
PHRAE / Phrae

| RWY | DIRECTION (TRUE BG) | THR | BEARING STRENGTH |
|---------|---------------------|---------------------------------|------------------|
| 01 | 005.39 | 18 07 31.41 N 100 09 50.31 E | PCN 20/F/C/X/T |
| 19 | 185.39 | 18 08 20.20 N 100 09 55.27 E | |
| TAXIWAY | | | PCN 20/F/C/X/T |
| APRON | | | PCN 20/F/C/X/T |

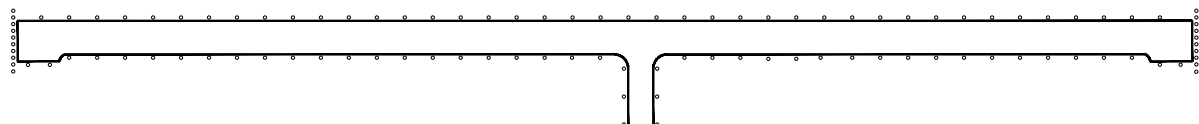
ELEVATIONS IN FEET AND DIMENSIONS IN METRES
BEARING ARE MAGNETIC



MARKING AIDS RWY 01/19 AND EXIT TWY



LIGHTING AIDS RWY 01/19 AND EXIT TWY



CHANGE :REVISED CHART. MAG VAR. ANNUAL RATE OF CHANGE. TABULAR INFO. PAPI. WIND CONE ADDED. AWOS ADDED. FENCE ADDED.

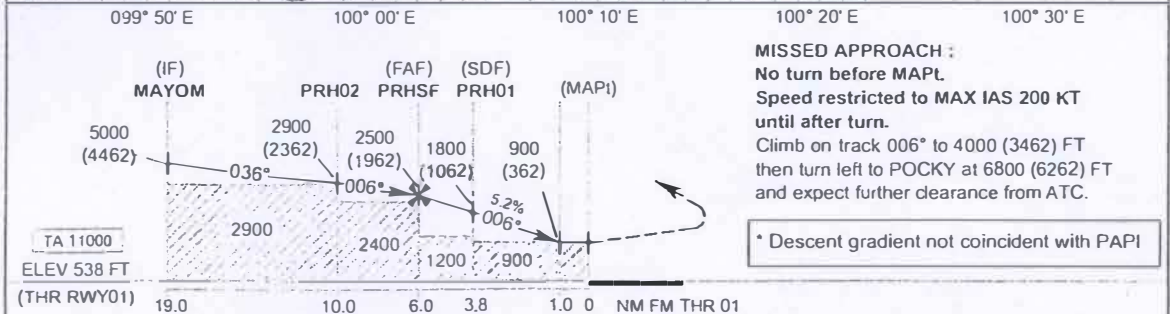
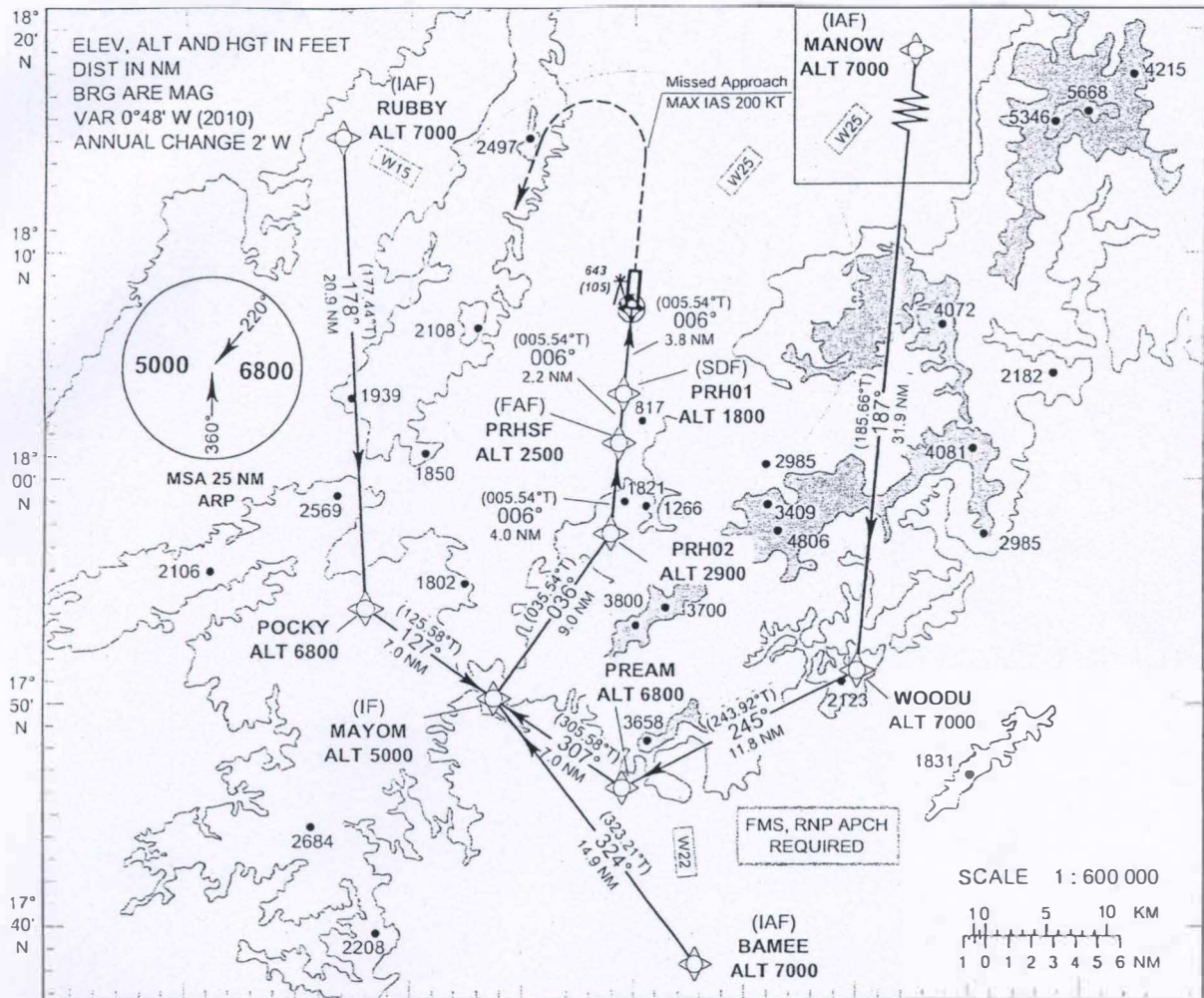
INTENTIONALLY BLANK

INSTRUMENT
APPROACH
CHART - ICAO

AERODROME ELEV 538 FT
HEIGHTS RELATED TO
AERODROME ELEV

APP : 120.1
TWR : 118.6

PHRAE/ Phrae (VTCP)
RNAV (GNSS) RWY 01



MISSED APPROACH :
No turn before MAP1.
Speed restricted to MAX IAS 200 KT until after turn.
Climb on track 006° to 4000 (3462) FT then turn left to POCKY at 6800 (6262) FT and expect further clearance from ATC.
* Descent gradient not coincident with PAPI

| OCA/H | A | B | C | NM to THR 01 | FAF | 5 NM | 4 NM | 3 NM | 2 NM | 1 NM | |
|--------------------|------------|---|---|-------------------|----------------|----------------|----------------|---------------|---------------|--------------|------|
| LNAV | 900 (362) | | | Altitude (Height) | 2500 (1962) | 2170 (1632) | 1850 (1312) | 1535 (997) | 1220 (682) | 900 (362) | |
| | | | | Ground speed (GS) | knot | 100 | 120 | 140 | 160 | 180 | 200 |
| Circling (OCH AAL) | 1200 (662) | | | Rate of descent | (ft/min) | 530 | 630 | 740 | 845 | 950 | 1055 |

PHRAE/ Phrae (VTCP)

RNAV (GNSS) RWY01

| Serial Number | Path Descriptor | Waypoint Identifier | WGS-84 Coordinates | | Flyover | Course OM (°T) | Magnetic Variation | Distance (NM) | Turn Direction | Altitude (FT) | Speed (KT) | VPN TCH | Navigation Specification |
|---------------|-----------------|---------------------|--------------------|----------------|---------|----------------|--------------------|---------------|----------------|---------------|------------|---------|--------------------------|
| | | | Latitude | Longitude | | | | | | | | | |
| 001 | F | BAMEE(IAF) | 17 38 09.59 N | 100 12 43.43 E | - | 324(32 3.21i) | 0.93 | 14.9 | - | 7000 | - | - | RNPAPCH |
| 002 | F | MANOW (IAF) | 18 23 08.23 N | 100 23 42.42 E | - | 187(18 5.66j) | 0.93 | 31.9 | - | 7000 | - | - | RNPAPCH |
| 004 | TF | WOODU | 17 51 18.24 N | 100 20 24.72 E | - | 245(243.92j) | 0.93 | 11.8 | R | 7000 | - | - | RNPAPCH |
| 005 | TF | PREAM | 17 46 05.42 N | 100 09 18.39 E | - | 307(305.58j) | 0.93 | 7.0 | R | 6800 | - | - | RNPAPCH |
| 003 | F | RUBBY (IAF) | 18 15 13.65 N | 099 56 23.10 E | - | 178(177.44j) | 0.93 | 20.9 | - | 7000 | - | - | RNPAPCH |
| 006 | TF | POCKY | 17 54 15.74 N | 099 57 21.95 E | - | 127(125.58j) | 0.93 | 7.0 | L | 6800 | - | - | RNPAPCH |
| 007 | TF | MAYOM (IF) | 17 50 10.67 N | 100 03 20.31 E | - | 036(035.54j) | 0.93 | 9.0 | L R | 5000 | - | - | RNPAPCH |
| 008 | TF | PRH02 | 17 57 31.85 N | 100 08 49.42 E | - | 006(005.54j) | 0.93 | 4.0 | L | 2900 | - | - | RNPAPCH |
| 009 | TF | PRHSF (FAF) | 18 01 31.68 N | 100 09 13.76 E | - | 006(00 5.54j) | 0.93 | 2.2 | - | 2500 | - | - | RNPAPCH |
| 010 | TF | PRH01 (SDF) | 18 03 43.53 N | 100 09 27.15 E | - | 006(00 5.54j) | 0.93 | 3.8 | - | 1800 | - | - | RNPAPCH |
| 011 | - | MAPt (THR01) | 18 07 31.41 N | 100 09 50.31 E | y | - | 0.93 | - | - | 900 | 200 | - | RNPAPCH |
| 012 | CA | - | - | - | - | 006(005.54j) | 0.93 | - | L | 4000 | - | - | RNPAPCH |
| 013 | CF | POCKY | 17 54 15.74 N | 099 57 21.95 E | - | - | 0.93 | - | L | 6800 | - | - | RNPAPCH |