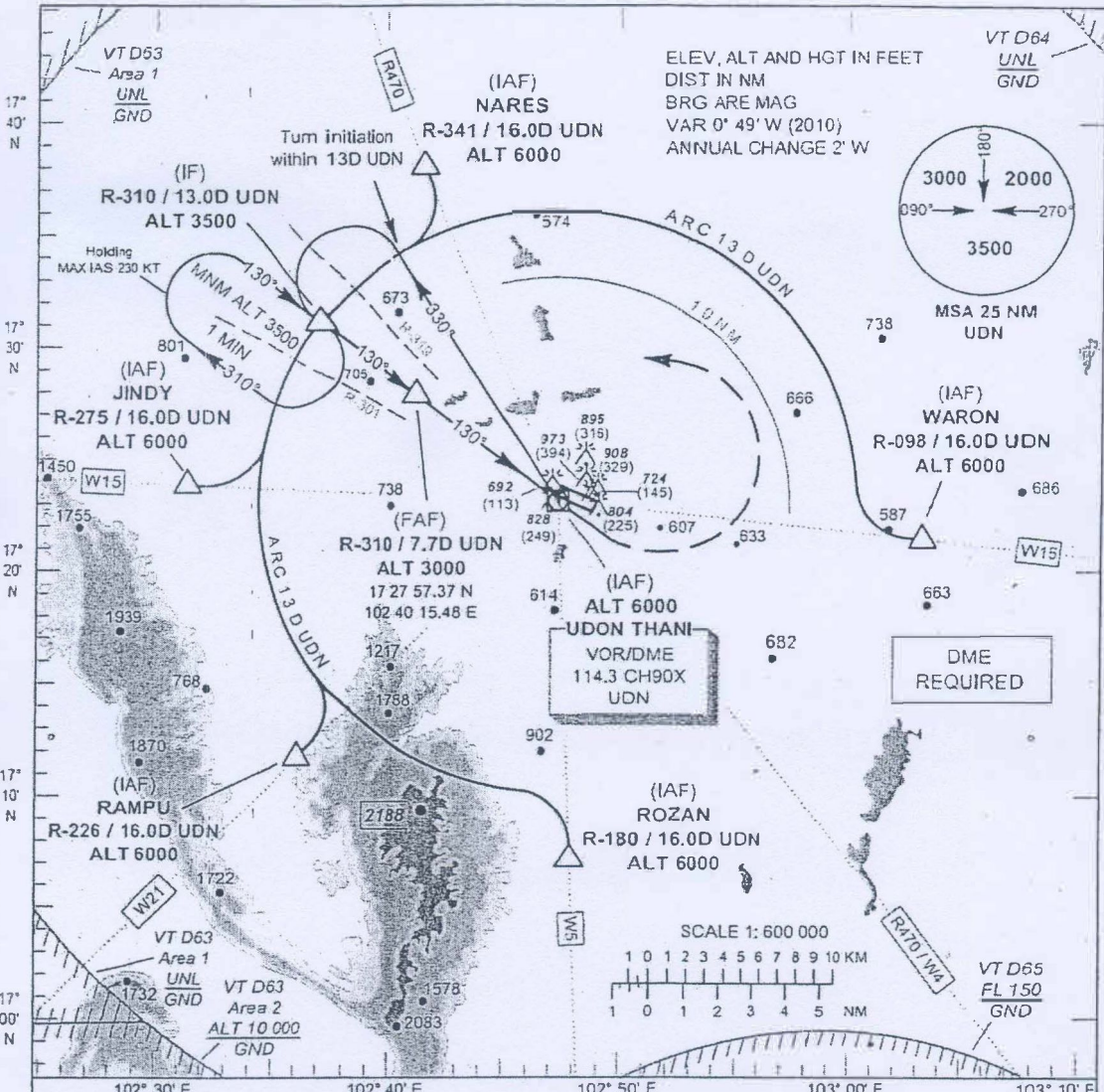


**INSTRUMENT
APPROACH
CHART - ICAO**

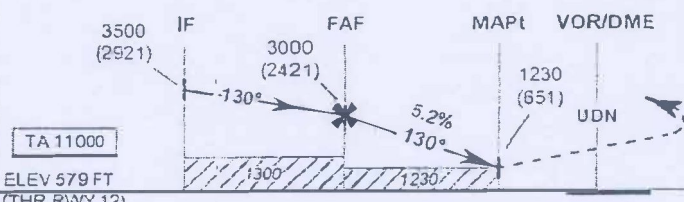
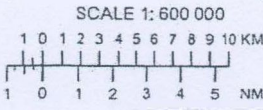
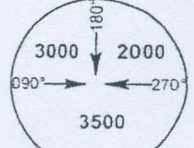
**AERODROME ELEV 579 FT
HEIGHTS RELATED TO
AERODROME ELEV**

APP : 126.2 , 265.9
TWR : 122.5 , 355.4
GND : 121.9 , 275.8

UDON THANI / Udon thani (VTUD)
VOR RWY12



ELEV, ALT AND HGT IN FEET
DIST IN NM
BRG ARE MAG
VAR 0° 49' W (2010)
ANNUAL CHANGE 2' W



MISSED APPROACH:
No turn before MAPt.
Climb straight ahead to 1700 (1121) FT then turn left to IF at 3500 (2921) FT and hold or as directed by ATC.

ELEV 579 FT (THR RWY 12)	13.0	7.7	2.2	0	DME FM VOR
	12.7	7.4	1.9	0	NM FM THR

OCA/H	A	B	C	D	Distance (UDN)	FAF	7 D	6 D	5 D	4 D	3 D	2.2 D
Straight - in Approach	1230 (651)				Altitude (Height)	3000 (2421)	2745 (2166)	2430 (1851)	2115 (1536)	1800 (1221)	1480 (901)	1230 (651)
Circling* (OCH AAL)	1300 (721)				Ground speed (GS)	knol	100	120	140	160	180	200
*FOR CIRCLING RESTRICTIONS SEE VERSO					Rate of descent	(ft/min)	530	630	740	845	950	1055