

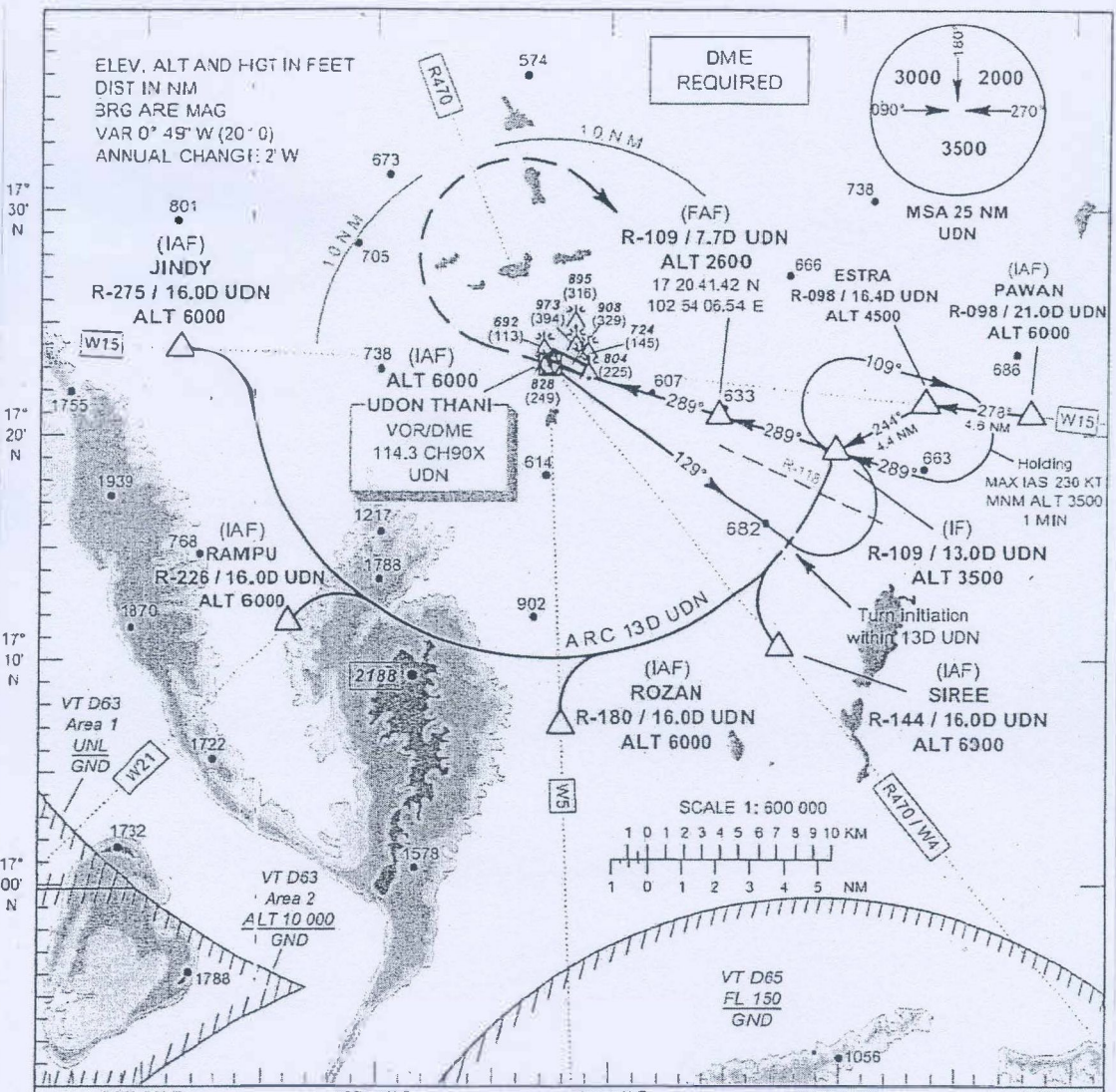
**INSTRUMENT APPROACH CHART - ICAO**

**AERODROME ELEV 579 FT**  
**HEIGHTS RELATED TO AERODROME ELEV**

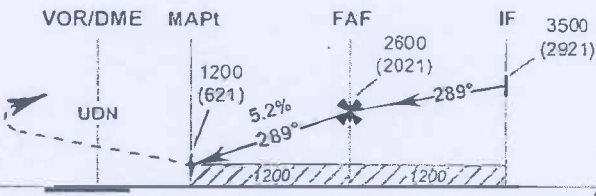
APP : 126.2 , 265.9  
 TWR : 122.5 , 355.4  
 GND : 121.9 , 275.8

**UDON THANI / Udon thani (VTUD)**

**VOR RWY30**



**No turn before MAP.**  
 Climb straight ahead to 1900 (1321) FT then turn right to IF at 3500 (2921) FT and hold or as directed by ATC.



**TA 11000**  
 ELEV 579 FT  
 (THR RWY 30)

DME FM VOR: 0, 3.3, 7.7, 13.0  
 NM FM THR: 0, 1.8, 6.2, 11.5

OCA/H	A	B	C	D	Distance (UDN)	3.3 D	4 D	5 D	6 D	7 D	FAF	
Straight - in Approach	1200 (621)				Altitude (Height)	1200 (621)	1420 (841)	1735 (1156)	2050 (1471)	2365 (1786)	2600 (2021)	
Circling* (OCH AAL)	1300 (721)				Ground speed (GS)	knot	100	120	140	160	180	200
*FOR CIRCLING RESTRICTIONS SEE VERSO					Rate of descent (ft/min)	530	630	740	845	950	1055	