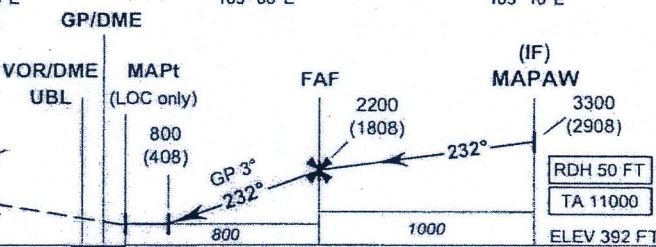


MISSED APPROACH:
No turn before MAPt for LOC only.
Climb straight ahead to 1400 (1008) FT then turn right to intercept R-052 UBL VOR then proceed to IF at 3300 (2908) FT and hold or as directed by ATC.



DME FM GP/DME	0 0.1 1.2	5.6	11.9
DME FM VOR/DME	0 1.2 2.3	6.7	13.0
NM FM THR	0 1.1	5.5	11.8

OCA/H	A	B	C	D	Distance (IUBL)						
					1.2 D	2 D	3 D	4 D	5 D	FAF	
Straight - In Approach	CAT I	650 (258)	660 (268)	670 (278)	680 (288)	800 (408)	1040 (648)	1360 (968)	1675 (1283)	1990 (1598)	2200 (1808)
		LOC only				800 (408)					
Circling (OCH AAL)		1350 (944)				Rate of descent (ft/min)					
						530	630	740	845	950	1055