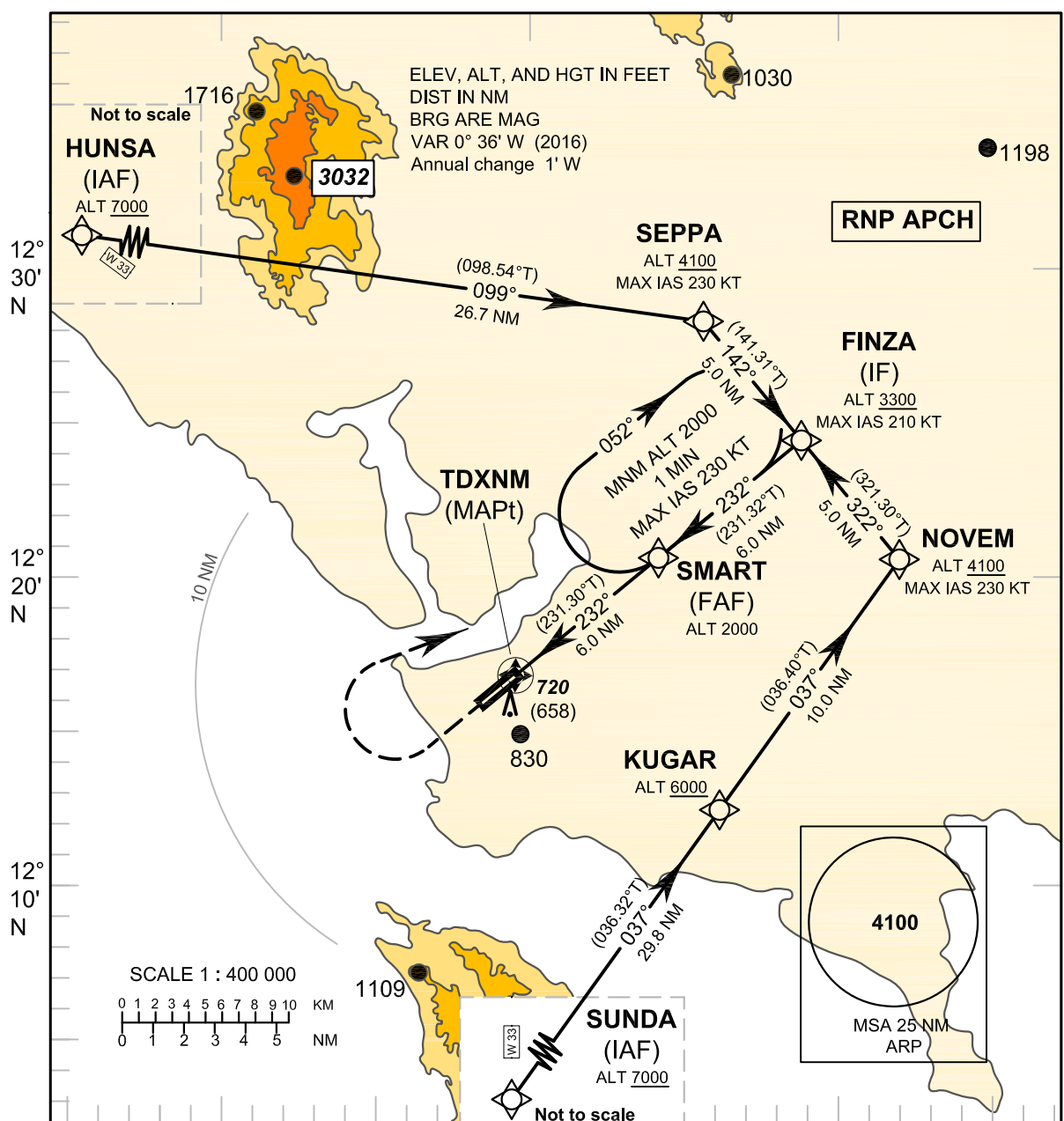


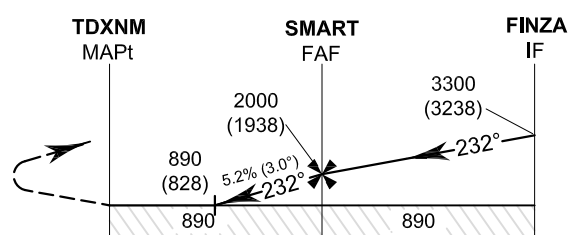
INSTRUMENT APPROACH CHART-ICAO
AERODROME ELEV 82 FT
HEIGHTS RELATED TO THR RWY23 - ELEV 62 FT

APP : 120.25
 TWR : 122.9

TRAT / Trat (VTBO)
 RNAV (GNSS) RWY23



Missed Approach :
No turn before MAPt.
 Climb on track 232° to 1200 FT,
 then turn right direct to **FAF**
 at 2000 FT and hold or as
 directed by ATC.



ELEV 62 FT
 (THR RWY 23)

NM FM THR 23
 0 2.5 3.5 6.0 12.0

| OCA/H | A | B | C | D | NM to NEXT WPT | 2.5 NM | 3 NM | 4 NM | 5 NM | FAF | | |
|--------------------|-------------|---|-------------|---|---------------------------------|-----------|------------|-------------|-------------|-------------|-----|-----|
| LNAV | 890 (828) | | | | Altitude (Height) | 890 (828) | 1060 (998) | 1375 (1313) | 1690 (1628) | 2000 (1938) | | |
| | | | | | Ground Speed | knot | 70 | 90 | 100 | 120 | 140 | 160 |
| Circling (OCH AAL) | 1180 (1098) | | 1280 (1198) | | Rate of descent FAF - MAPt 5.2% | (ft/min) | 369 | 474 | 527 | 632 | 737 | 843 |