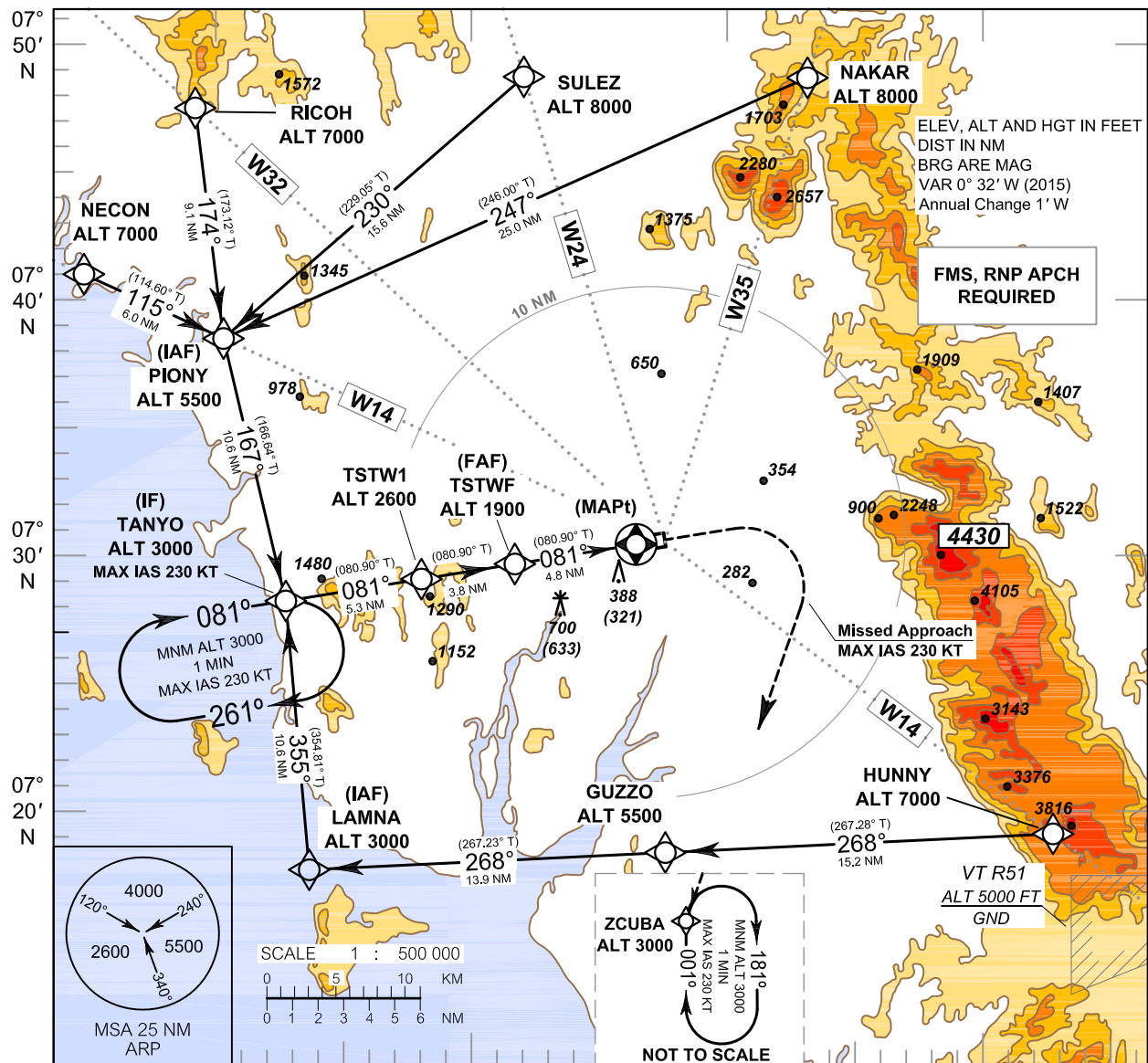


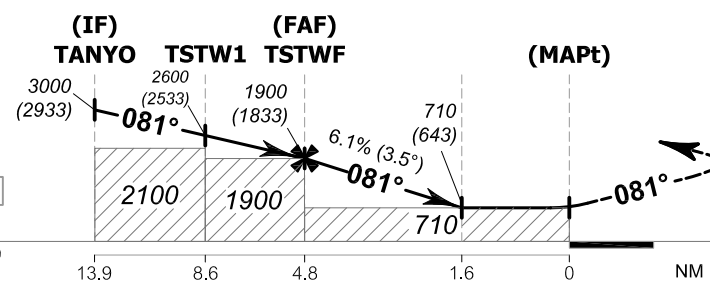
INSTRUMENT APPROACH CHART - ICAO
 AERODROME ELEV 67 FT
 HEIGHTS RELATED TO AERODROME ELEV

APP : 125.3
 TWR : 118.4 , 236.6

TRANG / Trang (VTST)
 RNAV (GNSS) RWY08



099° 20' E 099° 30' E 099° 40' E 099° 50' E



MISSED APPROACH :
 Speed restricted to MAX IAS 230 KT until after turn.
 Climb on track 081° to 1000 FT, then turn right direct to ZCUBA at 3000 FT and hold or as directed by ATC.

OCA/H	A	B	C	D	NM to THR08	FAF	4NM	3NM	2NM	1.6NM	
LNAV	710 (643)				Altitude (Height)	1900 (1833)	1600 (1533)	1230 (1163)	860 (793)	710 (643)	
	Ground speed	knot	70	90	100	120	140	160			
Circling (OCH AAL)	1100 (1033)				Rate of descent (ft/min)	432	556	618	741	865	988