

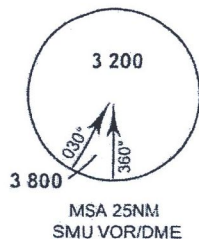
INSTRUMENT AERODROME ELEV 64 FT
APPROACH HEIGHTS RELATED TO
CHART-ICAO THR RWY 17 ELEV 43 FT

APP : 129.6, 305.4
 TWR : 118.9
 GND : 121.9
 ATIS : 128.6

SURATTANI/Samui (VTSM)
VOR RWY 17
CAT C

ELEV, ALT, AND HGT IN FEET
 DIST IN NM
 BRG ARE MAG
 VAR 0° 06' W (2001)

DME
Required



10° 00' N

09° 50' N

09° 40' N

09° 30' N

99° 50' E

100° 00' E

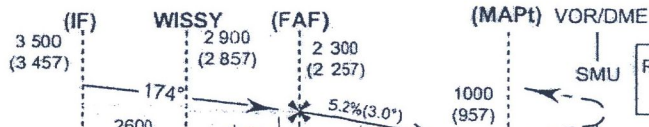
100° 10' E

100° 20' E

TA 11 000

Missed Approach :

Climb straight ahead to SMU VOR , then turn left to intercept R-070 (SMU) proceed to **AUSSY** continue climb to 4000 FT and hold or as directed by ATC.



Remark: During trial, operate under VMC only and reduce max cross wind limitation by 10 knots.

ELEV 43 FT
 (THR RWY 17)

12.5 9.9 6.9 2.9 1.0

NM FM THR 17

13.0 10.4 7.4 3.4 1.5 0

VOR/DME

OCA/H	C	Distance(SMU)	7.4 DME	7 DME	6 DME	5 DME	4 DME	3.4 DME	
Straight-in approach	1000 (957)	Altitude	2300 (2257)	2170 (2127)	1850 (1807)	1530 (1487)	1210 (1167)	1000 (957)	
		Ground Speed (GS)	knot	100	120	140	160	180	200
Circling* (OCH AAL)	1160 (1096)	FAF-MAPt 5.9 NM	(min/s)	3:32	2:57	2:32	2:13	1:58	1:46
* FOR CIRCLING RESTRICTIONS SEE VERSO		Rate of descent	(ft/min)	530	640	745	850	955	1 060