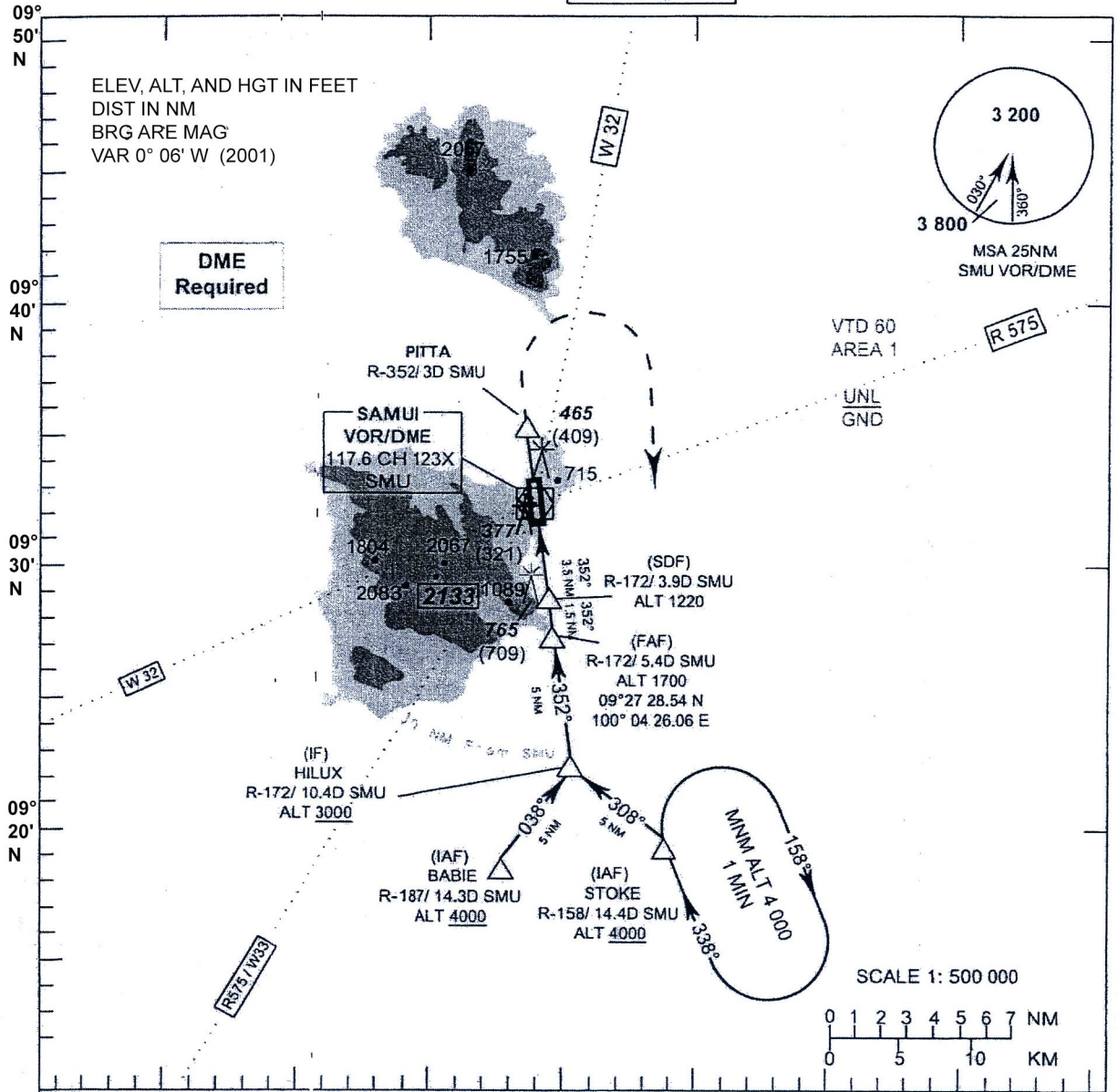


INSTRUMENT
APPROACH
CHART-ICAO

AERODROME ELEV 64 FT
HEIGHTS RELATED TO
THR RWY 35 ELEV 56 FT

APP : 129.6, 305.4
TWR : 118.9
GND : 121.9
ATIS : 128.6

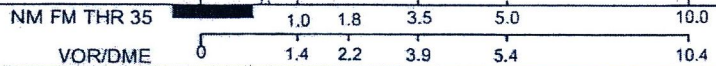
SURATTANI/Samui (VTSM)
VOR RWY 35
CAT A,B



TA 11 000

Missed Approach :
Climb straight ahead to 3 DME,
then turn right to intercept R-158(SMU)
proceed to **STOKE** at 4000 FT and hold
or as directed by ATC

ELEV 56 FT
(THR RWY 35)



OCA/H	A	B	Distance(SMU)	2.2 DME	3 DME	4 DME	5.4 DME			
Straight-in approach	680 (624)		Altitude (Height)	680 (624)	940 (884)	1260 (1204)	1700 (1644)			
Circling* (OCH AAL)	1160 (1096)		Ground Speed (GS)	knot	100	120	140	160	180	200
* FOR CIRCLING RESTRICTIONS SEE VERSO			FAF-MAPt 4 NM	(min/s)	2:24	2:00	1:43	1:30	1:20	1:12
			Rate of descent	(ft/min)	530	640	745	850	955	1 060