

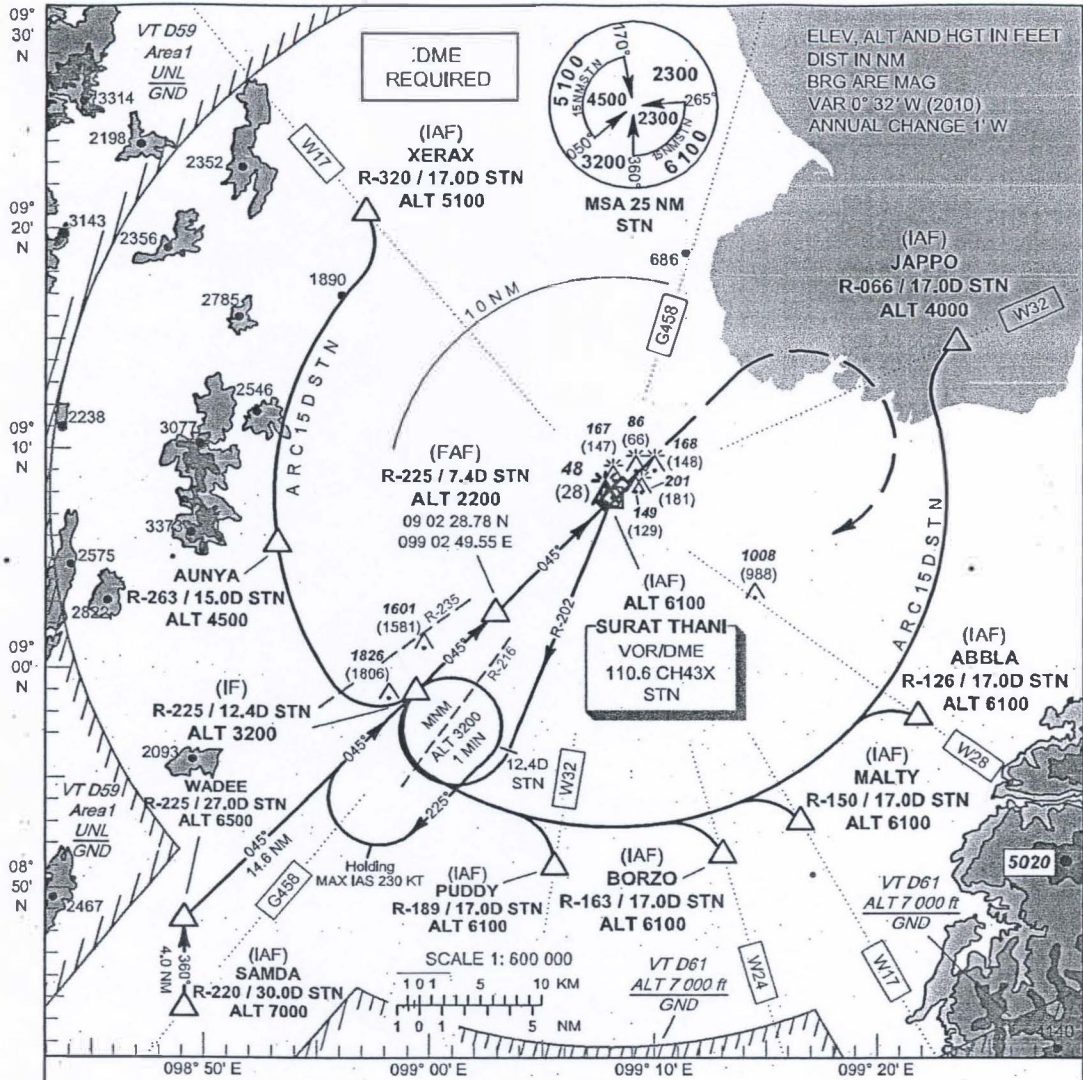
**INSTRUMENT APPROACH CHART - ICAO**

**AERODROME ELEV 20 FT**  
**HEIGHTS RELATED TO AERODROME ELEV**

APP : 123.35, 240.0  
 TWR : 122.7, 274.5  
 GND : 121.9, 275.8

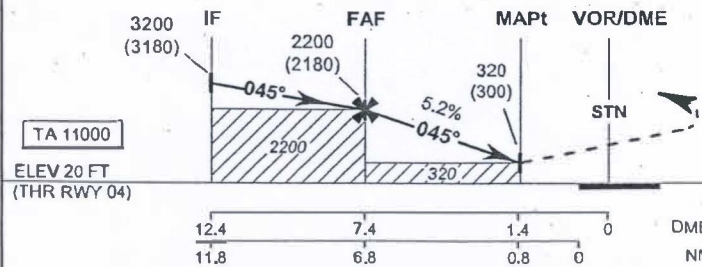
**SURAT THANI / Surat thani (VTSB)**

**VOR RWY04**



**MISSED APPROACH:**

**No turn before MAPt.**  
 Climb straight ahead to 1500 FT, then turn right direct to IF at 3200 FT and hold or as directed by ATC.



OCA/H	A	B	C	D	Distance (STN)	FAF	7 D	6 D	5 D	4 D	3 D	2 D	1,4 D
Straight-in Approach	320 (300)				Altitude (Height)	2200 (2180)	2090 (2070)	1775 (1755)	1460 (1440)	1145 (1125)	830 (810)	510 (490)	320 (300)
					Ground speed (GS)	knot	100	120	140	160	180	200	
					Rate of descent	(ft/min)	530	640	745	850	955	1060	
Circling (OCH AAL)	600 (580)		760 (740)										