

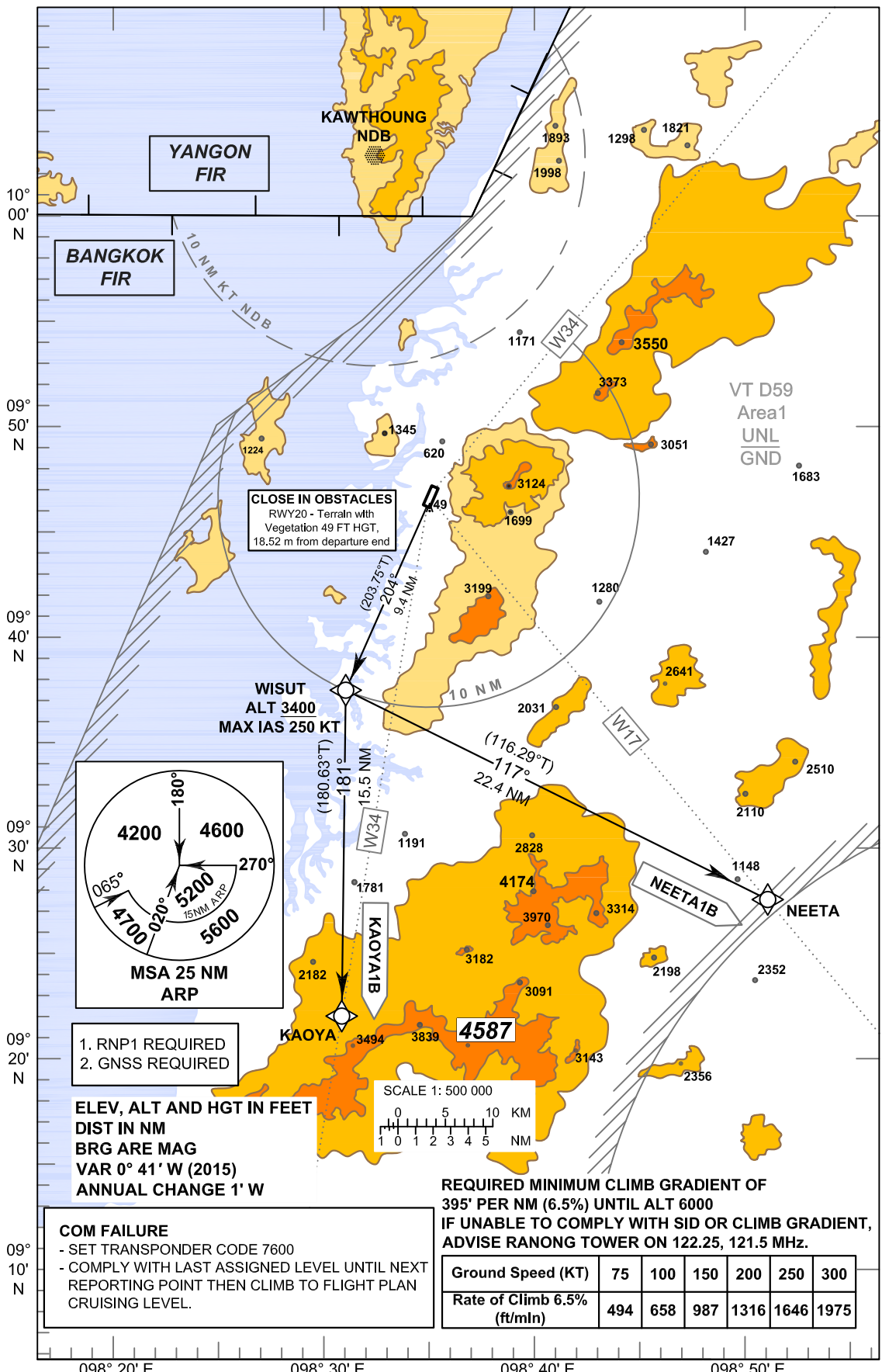
**STANDARD DEPARTURE CHART -  
INSTRUMENT (SID) - ICAO**

TRANSITION ALTITUDE  
11000 FT

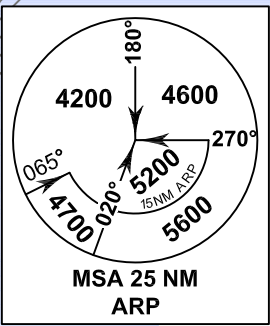
APP : 125.1  
TWR : 122.25 , 121.5

**RANONG / Ranong (VTSR)  
RNAV RWY20**

**KAOYA1B, NEETA1B**



**CLOSE IN OBSTACLES**  
RWY20 - Terrain with  
Vegetation 49 FT HGT,  
18.52 m from departure end



1. RNP1 REQUIRED
2. GNSS REQUIRED

**ELEV, ALT AND HGT IN FEET  
DIST IN NM  
BRG ARE MAG  
VAR 0° 41' W (2015)  
ANNUAL CHANGE 1' W**



**REQUIRED MINIMUM CLIMB GRADIENT OF  
395' PER NM (6.5%) UNTIL ALT 6000  
IF UNABLE TO COMPLY WITH SID OR CLIMB GRADIENT,  
ADVISE RANONG TOWER ON 122.25, 121.5 MHZ.**

|  |     |     |     |      |      |      |
|--|-----|-----|-----|------|------|------|
| <b>Ground Speed (KT)</b>               | 75  | 100 | 150 | 200  | 250  | 300  |
| <b>Rate of Climb 6.5%<br/>(ft/min)</b> | 494 | 658 | 987 | 1316 | 1646 | 1975 |

**COM FAILURE**  
- SET TRANSPONDER CODE 7600  
- COMPLY WITH LAST ASSIGNED LEVEL UNTIL NEXT  
REPORTING POINT THEN CLIMB TO FLIGHT PLAN  
CRUISING LEVEL.