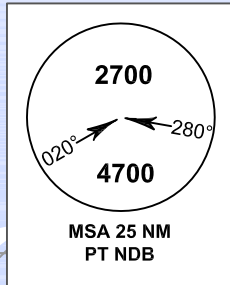


ELEV, ALT AND HGT IN FEET  
DIST IN NM  
BRG ARE MAG  
VAR 0°14' W (2016)  
ANNUAL CHANGE 0°0' E

VT D50  
1. UNL  
ALT 8 000 ft  
2. ALT 6 000 ft  
GND

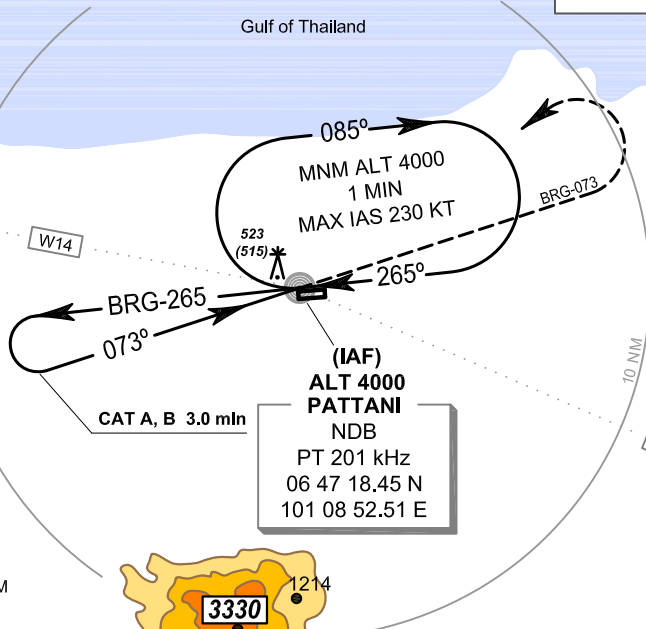


07° 00' N

06° 50' N

06° 40' N

Gulf of Thailand



VT D49  
UNL  
ALT 2 000 ft

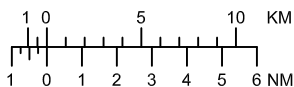
1184

1214

3330

(IAF)  
ALT 4000  
PATTANI  
NDB  
PT 201 kHz  
06 47 18.45 N  
101 08 52.51 E

SCALE 1 : 400 000



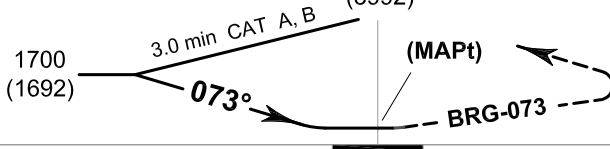
101° 00' E

101° 10' E

101° 20' E

(IAF)  
PT NDB  
4000  
(3992)

**MISSED APPROACH :**  
Climb on BRG - 073 until 2000 FT,  
then turn left direct to PT NDB  
at 4000 FT and hold or  
as directed by ATC.



TA 11000

ELEV 7 FT  
(THR RWY 08)

OCA/H	A	B
Straight - in approach	820 (812)	
Circling (OCH AAL)	1900 (1892)	