

INSTRUMENT AERODROME ELEV 781 ft
 GUIDANCE(GS) HEIGHTS RELATED TO
 SYSTEM THR RWY 11 ELEV 707 ft

APP 126.2
 TWR 122.3
 236.6

MAE HONG SON / Mae Hong Son
 IGS VOR / DME
 RWY 11

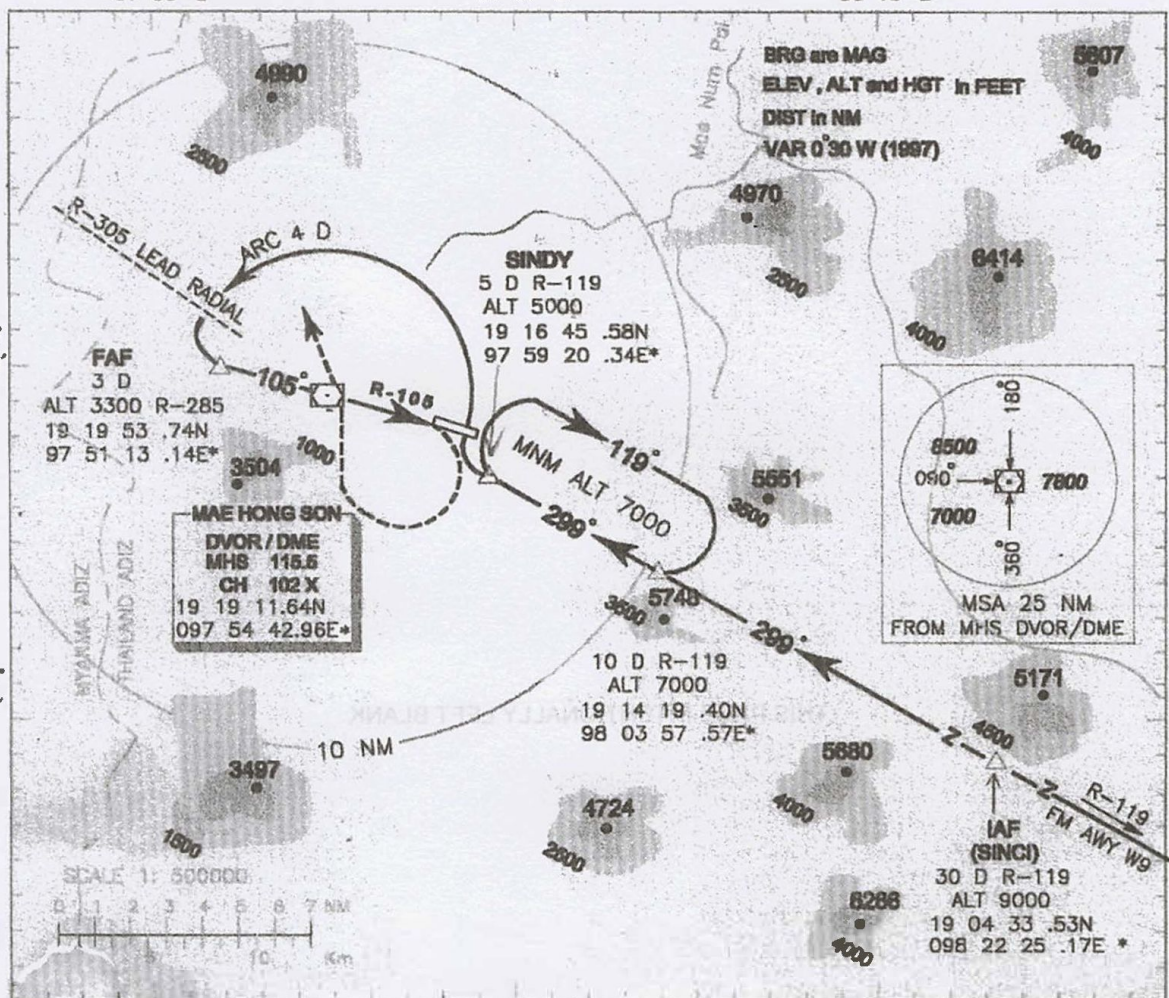
97° 50' E

98° 00' E

98° 10' E

19° 20' N
 19° 10' N

19° 20' N
 19° 10' N

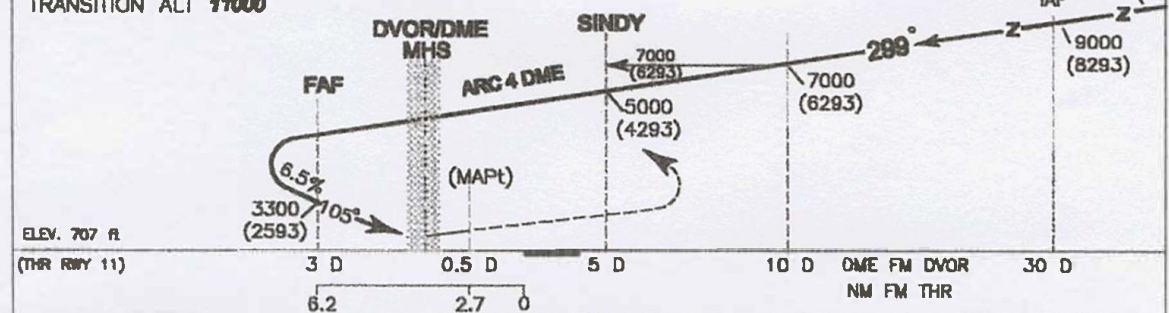


97° 50' E
 TRANSITION ALT 11000

98° 00' E

98° 10' E

FM AWY W9
 IAF



MISSED APPROACH:
 At 0.5 DME (FM DVOR) accelerate to 2.5 DME, then climbing right turn speed restricted to **IAS 150 kt**
 to intercept **360 DEG** course inbound to **MHS DVOR** cross **MHS DVOR** at **4500 ft** or above, then fly on **R-360**
 outbound to **3 DME** then climbing left turn to **MHS DVOR** and back to **SINDY** at **7000 (6293)** ft.

Remark : required vis 5 km					Distance	3 D	2 D	1 D	0 D	0.5 D
					Altitude (Height)	3300 (2593)	2900 (2193)	2500 (1793)	2100 (1393)	1900 (1193)
OCA / H	A	B	C	D	GS (kt)	100	120	140	160	
Straight-in Approach	1900 (1193)				NA	FAF-MAPT 3.5 NM min:s	2:06	1:45	1:30	1:19
Circling	NOT AUTHORIZED				Rate of descent (ft/min)	660	790	920	1050	