

STANDARD DEPARTURE CHART -  
INSTRUMENT (SID) - ICAO

TRANSITION ALTITUDE  
11000 FT

APP : 129.6 , 305.4  
TWR : 118.1 , 236.6  
GND : 121.9 , 275.8  
ATIS : 127.2 , 301.5

CHIANG MAI /  
Chiang Mai Intl (VTCC)

RNAV RWY36

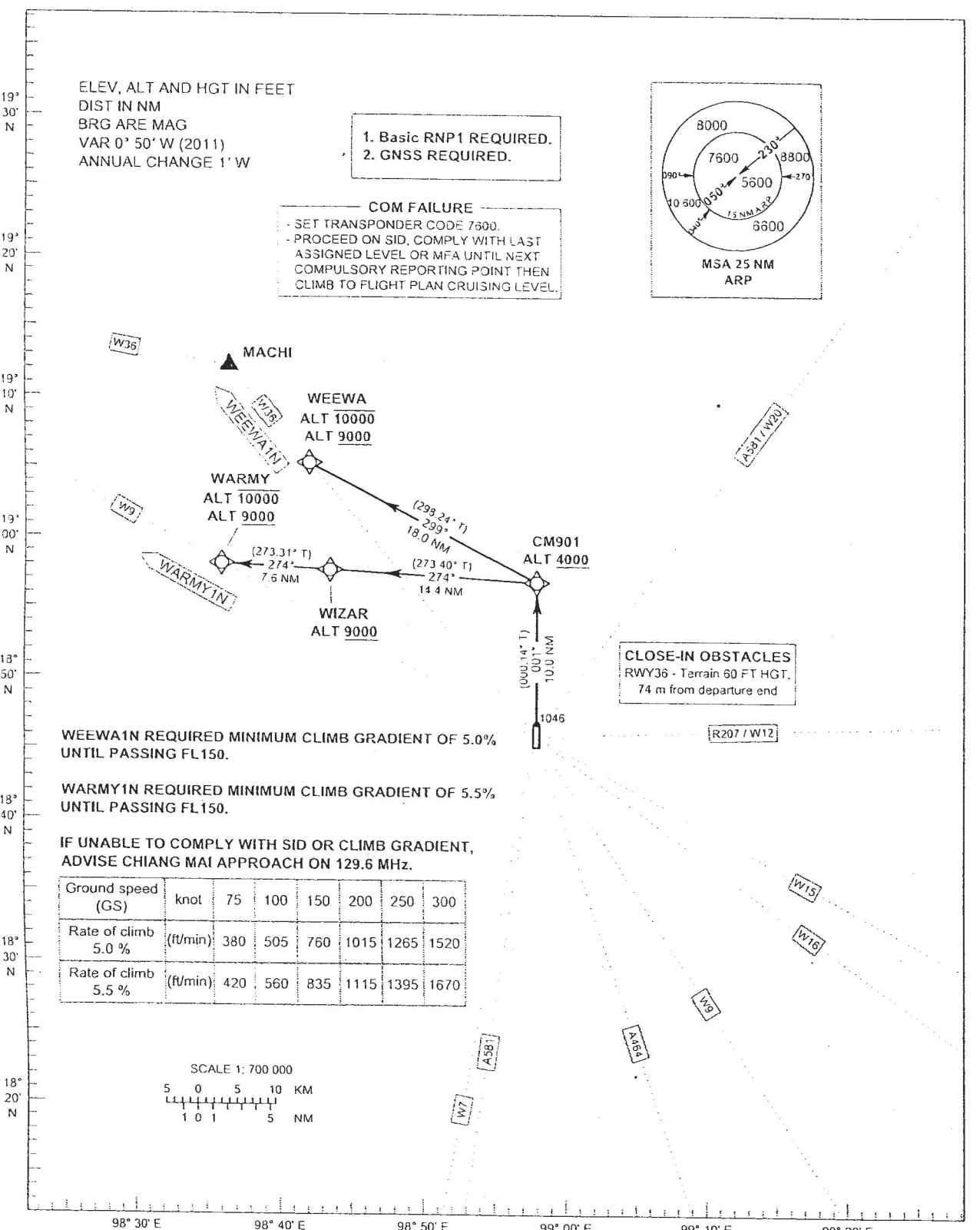
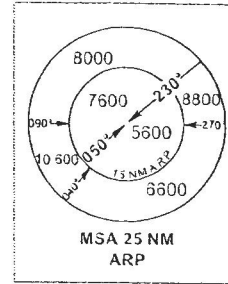
WARMY1N WEEWA1N

ELEV, ALT AND HGT IN FEET  
DIST IN NM  
BRG ARE MAG  
VAR 0° 50' W (2011)  
ANNUAL CHANGE 1" W

1. Basic RNP1 REQUIRED.
2. GNSS REQUIRED.

COM FAILURE

- SET TRANSPONDER CODE 7600.
- PROCEED ON SID, COMPLY WITH LAST ASSIGNED LEVEL OR MFA UNTIL NEXT COMPULSORY REPORTING POINT THEN CLIMB TO FLIGHT PLAN CRUISING LEVEL.



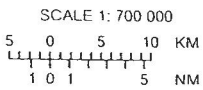
CLOSE-IN OBSTACLES  
RWY36 - Terrain 60 FT HGT,  
74 m from departure end

WEEWA1N REQUIRED MINIMUM CLIMB GRADIENT OF 5.0%  
UNTIL PASSING FL150.

WARMY1N REQUIRED MINIMUM CLIMB GRADIENT OF 5.5%  
UNTIL PASSING FL150.

IF UNABLE TO COMPLY WITH SID OR CLIMB GRADIENT,  
ADVISE CHIANG MAI APPROACH ON 129.6 MHz.

Ground speed (GS)	knot	75	100	150	200	250	300
Rate of climb 5.0 %	(ft/min)	380	505	760	1015	1265	1520
Rate of climb 5.5 %	(ft/min)	420	560	835	1115	1395	1670



19° 30' N  
19° 20' N  
19° 10' N  
19° 00' N  
18° 50' N  
18° 40' N  
18° 30' N  
18° 20' N

98° 30' E 98° 40' E 98° 50' E 99° 00' E 99° 10' E 99° 20' E