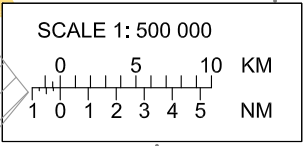
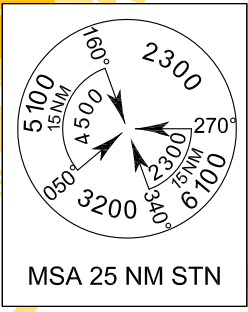
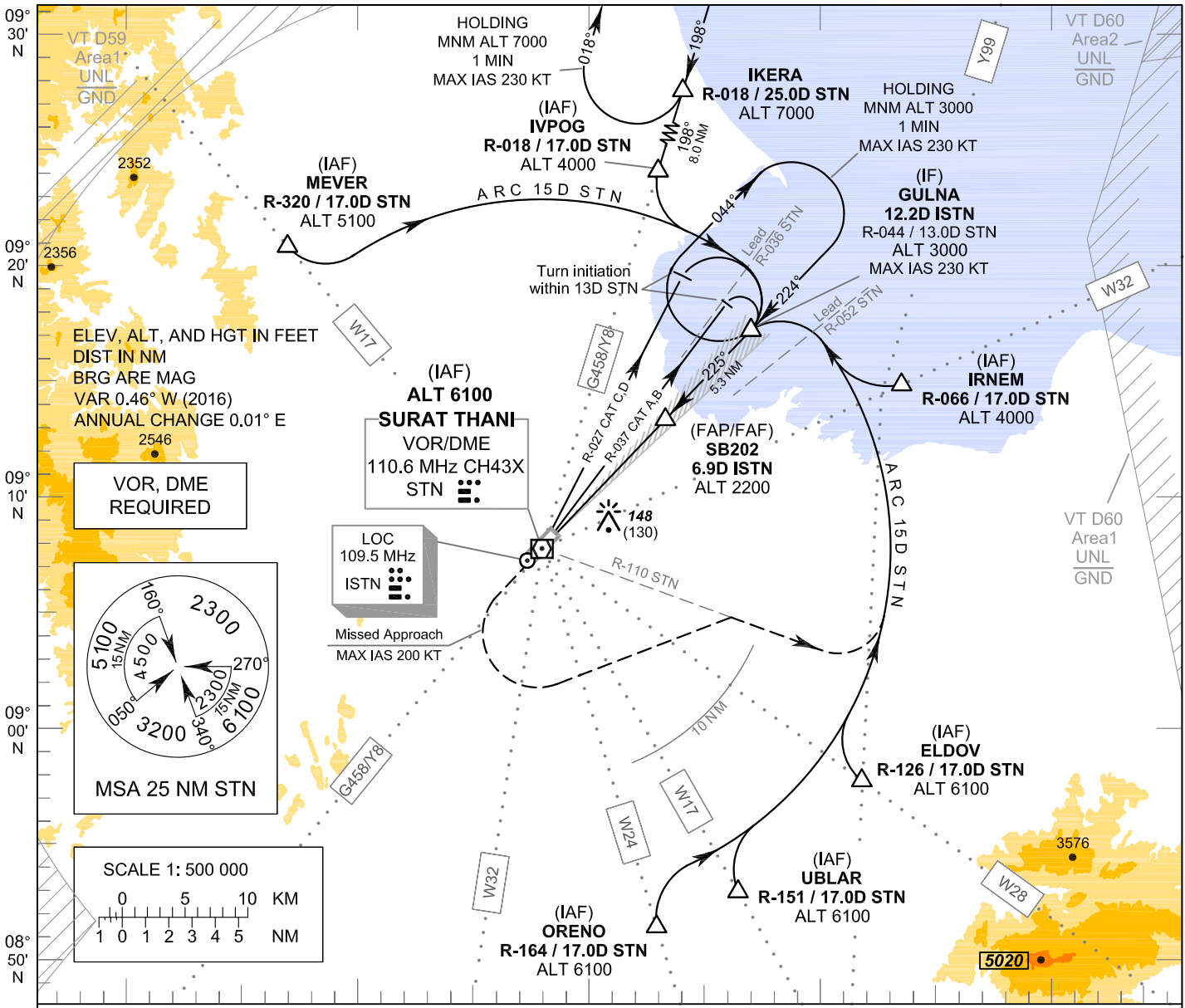


**INSTRUMENT  
APPROACH  
CHART - ICAO**

**AERODROME ELEV 20 FT**  
HEIGHTS RELATED TO  
THR RWY22 - ELEV 18 FT

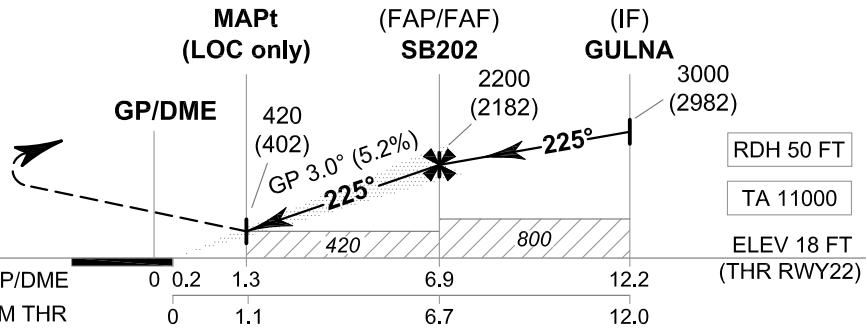
APP : 123.35 , 240.0  
TWR : 122.7 , 274.5  
GND : 121.9 , 275.8  
ATIS : 125.95

**SURAT THANI / Surat Thani (VTSB)**  
ILS or LOC y RWY22



098° 50' E      099° 00' E      099° 10' E      099° 20' E      099° 30' E

**MISSED APPROACH:**  
No turn before MAPt (for LOC only).  
Speed restricted to  
**MAX IAS 200 KT** until after turn.  
Climb straight ahead to 1200 FT,  
then turn left to intercept outbound  
R-110 STN VOR, then proceed to  
15 DME STN VOR and follow arc to  
GULNA at 3000 FT and hold or  
as directed by ATC.



CHANGE: NEW CHART.

OCA/H		A	B	C	D	GS OUT	Distance (ISTN)	1.3 D	2 D	3 D	4 D	5 D	6 D	FAF
Straight - in Approach	CAT I	280 (262)					Ground speed	Altitude (Height)	420 (402)	635 (617)	950 (932)	1270 (1252)	1585 (1567)	1900 (1882)
	LOC only	420 (402)				Rate of descent (5.2%)		knot	70	90	100	120	140	160
Circling (OCH AAL)		860 (840)					ft/min	369	474	527	632	737	843	