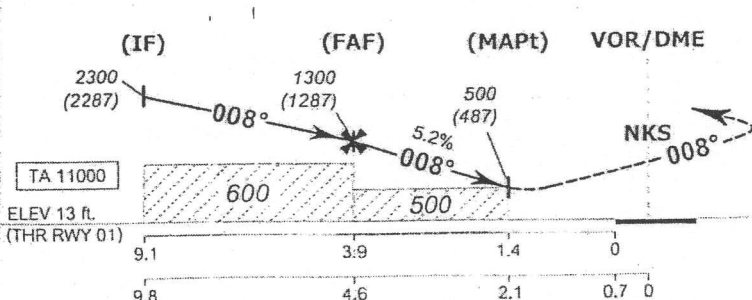
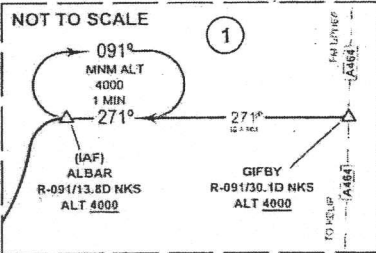
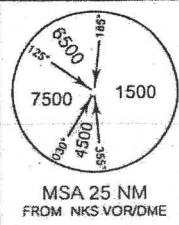
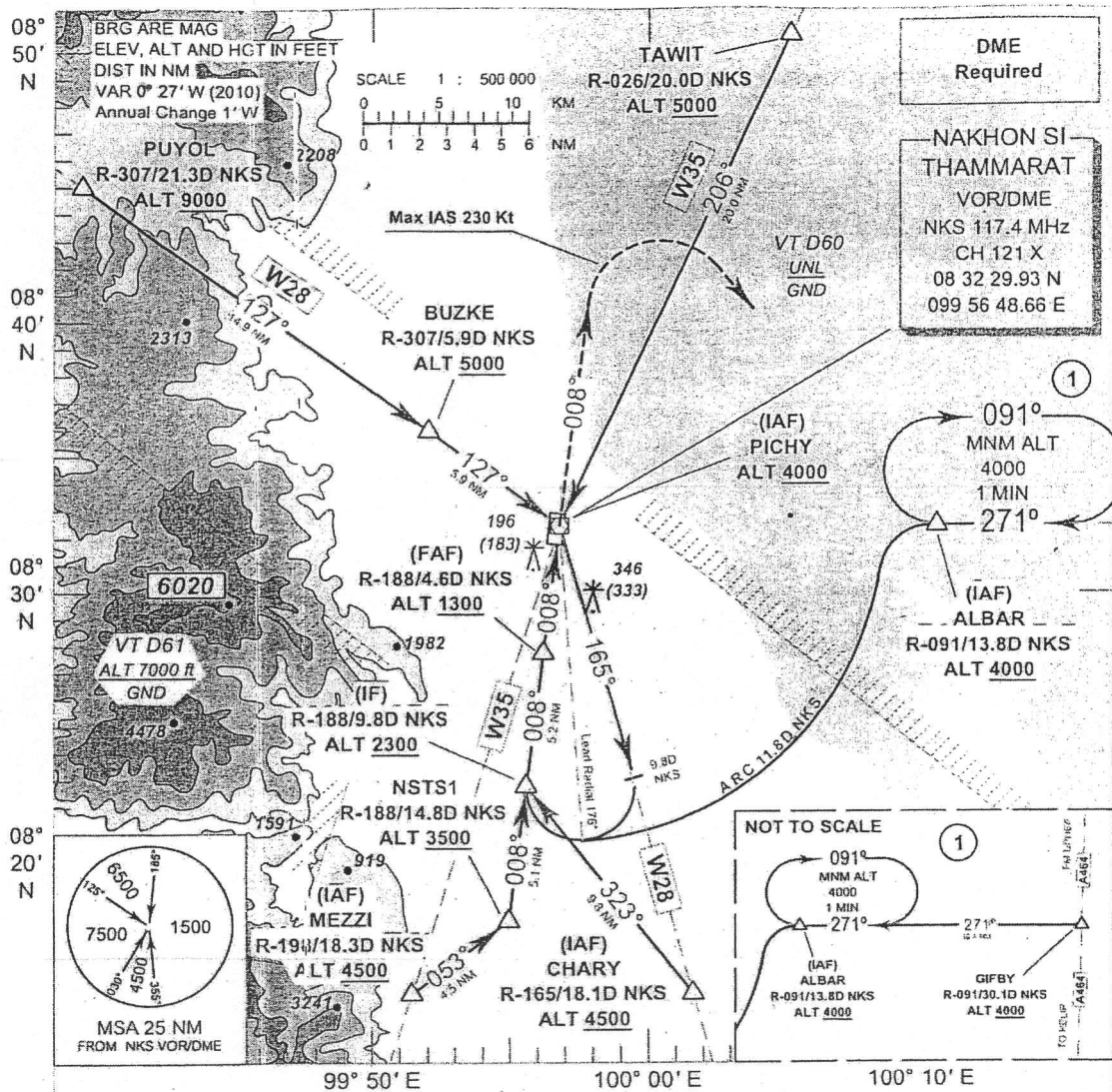


INSTRUMENT AERODROME ELEV. 13 ft  
 APPROACH HEIGHTS RELATED TO  
 CHART - ICAO AERODROME ELEV.

APP : 119.75, 240.0  
 TWR : 122.55, 236.6

NAKHON SI THAMMARAT /  
 Nakhon Si Thammarat (VTSF)  
 VOR RWY 01



MISSED APPROACH :  
 Climb straight ahead to 2000 ft  
 then turn right to intercept  
 R-091 NKS and continue climb  
 to ALBAR at 4000 ft  
 and hold or as directed by ATC.

OCA/H	A	B	C	D	Distance (NKS)	FAF	4D	3D	MAPt		
Straight - in approach	500 (487)				Altitude (Height)	1300 (1287)	1105 (1092)	790 (777)	500 (487)		
	Ground speed (GS)		knot		100	120	140	160	180	200	
Circling (OCH AAL)	740 (727)				Rate of descent (ft/min)	530	630	740	845	950	1055