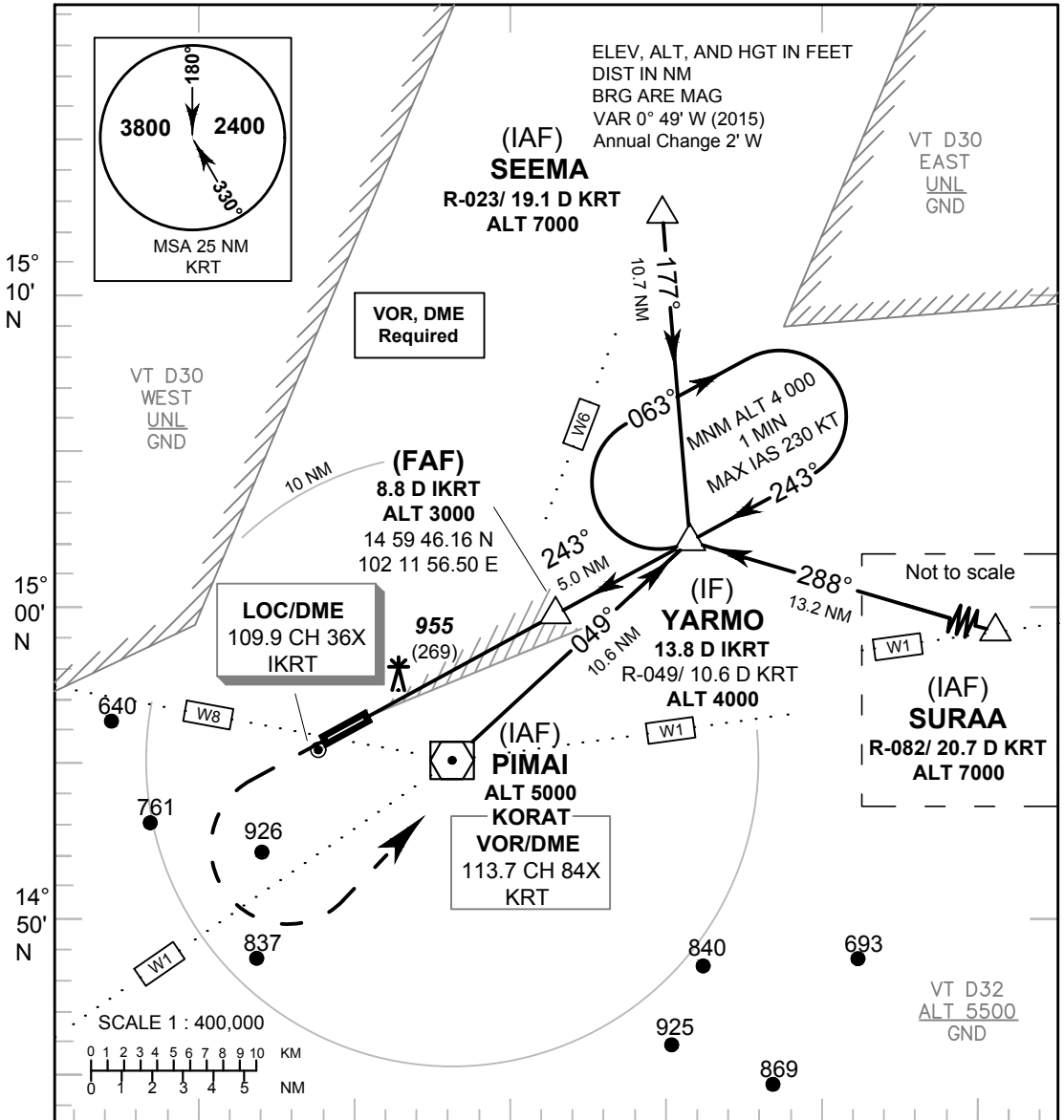


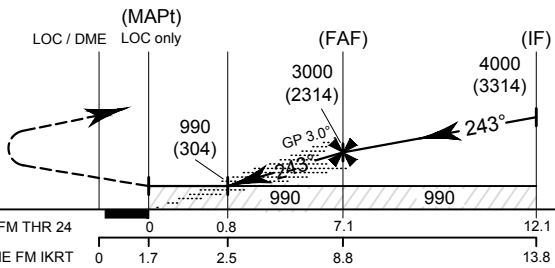
INSTRUMENT AERODROME ELEV 729 FT
APPROACH HEIGHTS RELATED TO
CHART-ICAO THR RWY24 - ELEV 686 FT

APP : 129.75, 349.0
 TWR : 122.2, 240.5
 GND : 121.75, 257.8
 ATIS : 390.6

NAKHON RATCHASIMA/
Khorat (VTUN)
ILS or LOC RWY24



TA 11000



Missed Approach :
 No turn before MAPt (for LOC only).
 Climb straight ahead to 2600 FT, then
 turn left to intercept R-049 KRT VOR
 and proceed to YARMO at 4000 FT and
 hold or as directed by ATC.

ELEV 686 FT (THR RWY 24)
RDH 50 FT

| OCA/H | A | B | C | D | GS OUT | Distance (IKRT) | 2.5 D | 3.0 D | 4 D | 5 D | 6 D | 7 D | 8 D | FAF |
|----------------------------|------------|------------|---|---|--------------|----------------------|-----------|------------|------------|-------------|-------------|-------------|-------------|-------------|
| | | | | | | Altitude (Height) | 990 (304) | 1145 (459) | 1460 (774) | 1780 (1094) | 2095 (1409) | 2410 (1724) | 2725 (2039) | 3000 (2314) |
| Straight-in approach CAT I | 900 (214) | | | | Ground Speed | knot | 70 | 90 | 100 | 120 | 140 | 160 | | |
| | 990 (304) | | | | | Rate of descent 3.0° | (ft/min) | 372 | 478 | 531 | 637 | 743 | 849 | |
| LOC only | 990 (304) | | | | | | | | | | | | | |
| Circling (OCH AAL) | 1400 (671) | 1700 (971) | | | | | | | | | | | | |

MILITARY USE ONLY