

INSTRUMENT APPROACH CHART - ICAO

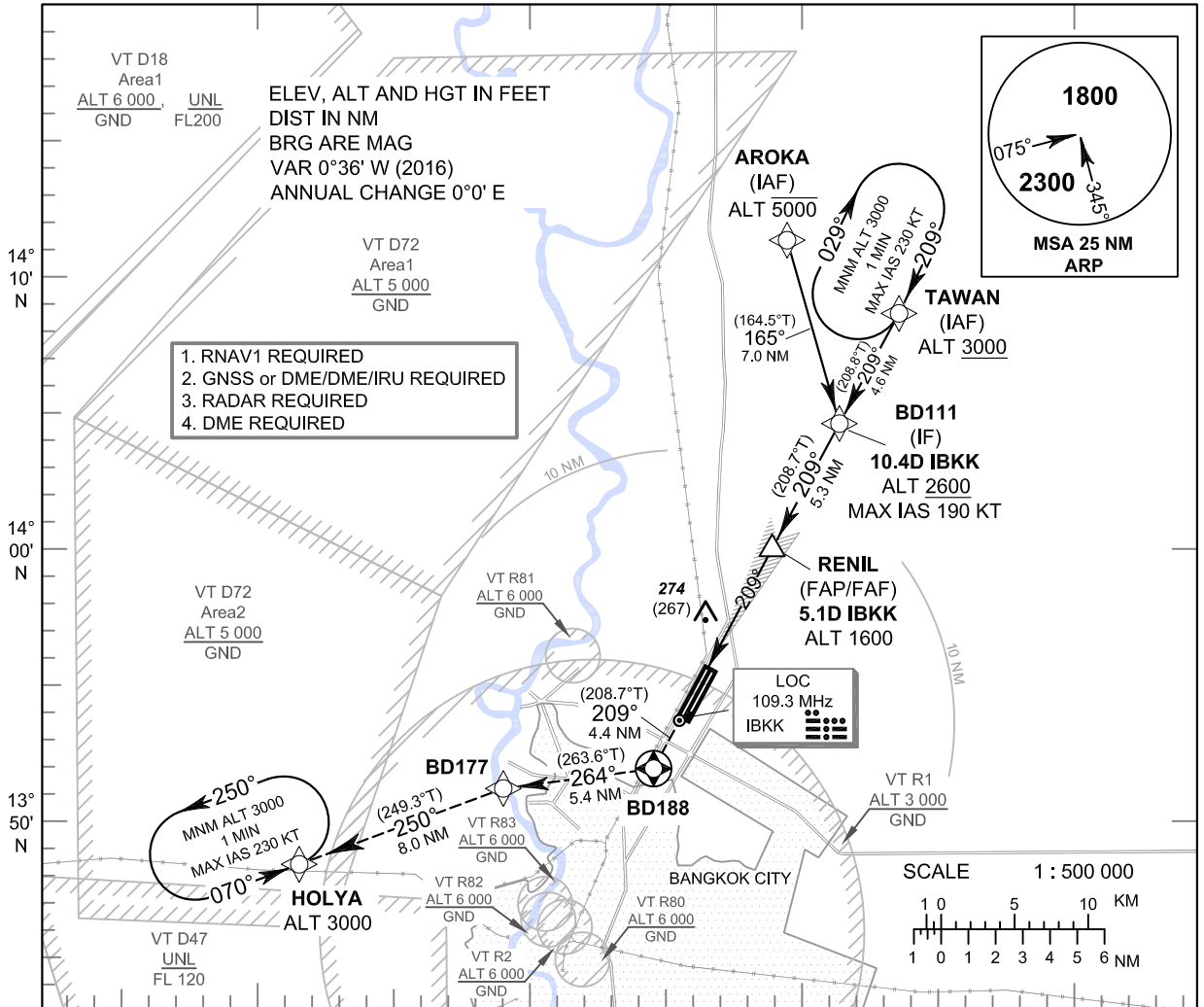
AERODROME ELEV 9 FT
HEIGHTS RELATED TO THR RWY21R - ELEV 7 FT

APP : 119.1, 262.5
 : 119.4, 262.5
 : 120.3, 262.5
 : 121.7, 262.5
 : 122.35, 262.5
 : 124.35, 262.5
 : 125.2, 262.5
 DAR : 125.5, 262.5
 TWR : 118.1, 236.6
 ATIS : 126.4, 344.6

BANGKOK / Don Mueang Intl (VTBD)

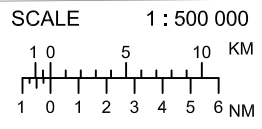
ILS or LOC z RWY21R

CAT II



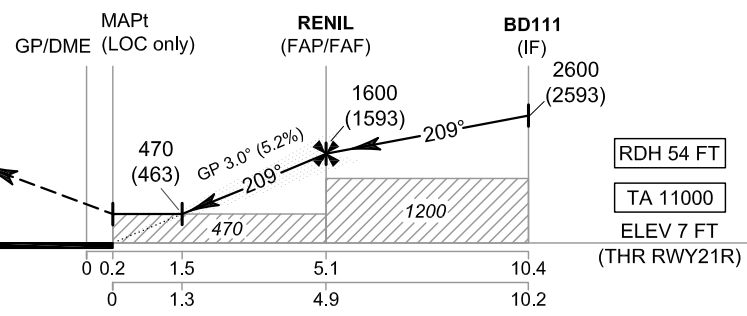
- 1. RNAV1 REQUIRED
- 2. GNSS or DME/DME/IRU REQUIRED
- 3. RADAR REQUIRED
- 4. DME REQUIRED

LOC
 109.3 MHz
 IBKK



MISSED APPROACH :
No turn before MAPt
(for LOC only).

Climb on track 209° to BD188, then turn right to BD177, then proceed to HOLYA at 3000 FT, and hold or as directed by ATC.



		MAPt				RENIL		BD111						
		GP/DME (LOC only)				(FAP/FAF)		(IF)						
						1600 (1593)		2600 (2593)						
						470 (463)		RDH 54 FT						
						GP 3.0° (5.2%)		TA 11000						
						470		ELEV 7 FT						
								(THR RWY21R)						
		DME FM GP/DME				0.2		1.5		5.1				
		NM FM THR				0		1.3		4.9				
OCA/H		A	B	C	D	GS OUT	Distance (IBKK)	1.5 D	2 D	3 D	4 D	5 D	FAF	
Straight - in Approach		CAT I					Altitude (Height)		470 (463)	625 (618)	940 (933)	1260 (1253)	1575 (1568)	1600 (1593)
		CAT II												
LOC only		470 (463)				Ground speed		knot	70	90	100	120	140	160
Circling (OCH AAL)		700 (691)				Rate of descent (5.2%)		(ft/min)	369	474	527	632	737	843
		800 (791)												
		1100 (1091)												

CHANGE: NEW CHART.