

STANDARD INSTRUMENT DEPARTURE CHART  
(SID) - ICAO

UBON RATCHATANI / Ubon (VTUU)

**RWY 05**

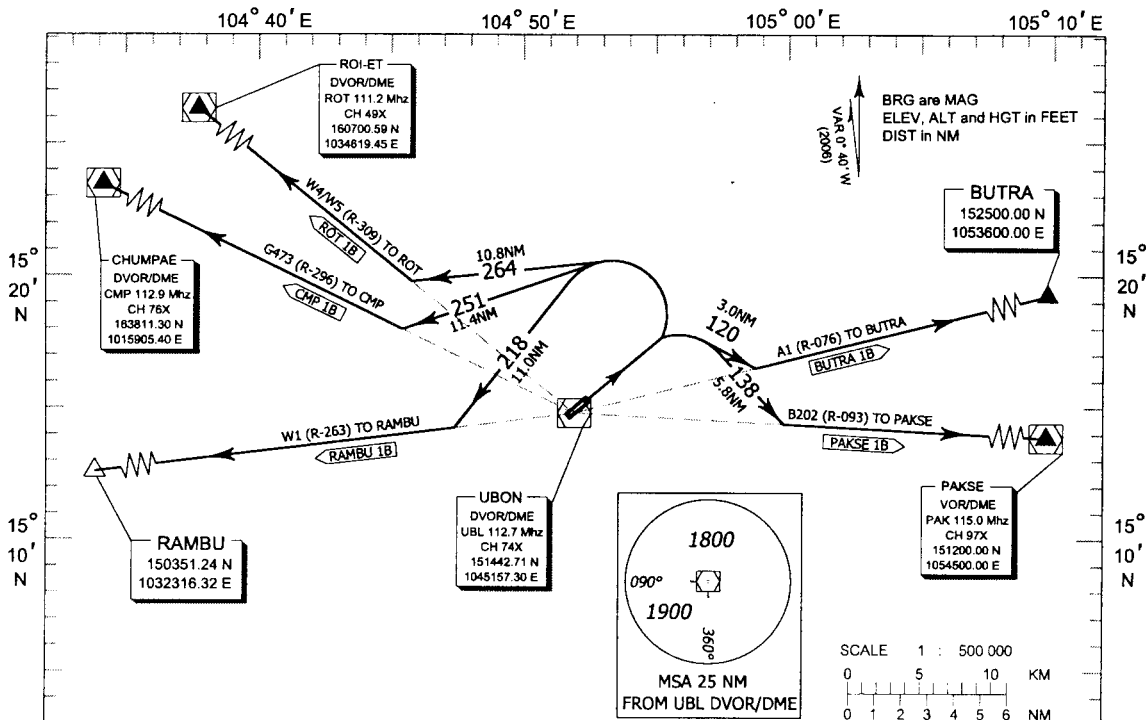
APP : 123.5 , 257.8

RAMBU 1B, ROT 1B

TWR : 119.9 , 274.5

CMP 1B, BUTRA 1B

PAKSE 1B



COMMUNICATION FAILURE PROCEDURE

- Squawk A7600
- Comply with last assigned level until next reporting point then climb to flight plan cruising level.

Warning

- No Turn before Departure End of Runway
- Procedure Design Gradient = 3.3 %
- Max IAS 230 kts for turning after departure

**RAMBU ONE BRAVO :** AFTER DEPARTURE CLIMB ON RWY HEADING UNTIL 1200FT OR ABOVE THEN TURN LEFT HEADING 218 TO INTERCEPT AND PROCEED ON R-263 UBL TO RAMBU  
(RAMBU 1B)

**CHUMPAE ONE BRAVO :** AFTER DEPARTURE CLIMB ON RWY HEADING UNTIL 1200FT OR ABOVE THEN TURN LEFT HEADING 251 TO INTERCEPT AND PROCEED ON R-296 UBL TO CHUMPAE DVOR/DME  
(CMP 1B)

**ROIET ONE BRAVO :** AFTER DEPARTURE CLIMB ON RWY HEADING UNTIL 1200FT OR ABOVE THEN TURN LEFT HEADING 264 TO INTERCEPT AND PROCEED ON R-309 UBL TO ROIET DVOR/DME  
(ROT 1B)

**BUTRA ONE BRAVO :** AFTER DEPARTURE CLIMB ON RWY HEADING UNTIL 1400FT OR ABOVE THEN TURN RIGHT HEADING 120 TO INTERCEPT AND PROCEED ON R-076 UBL TO BUTRA  
(BUTRA 1B)

**PAKSE ONE BRAVO :** AFTER DEPARTURE CLIMB ON RWY HEADING UNTIL 1400FT OR ABOVE THEN TURN RIGHT HEADING 138 TO INTERCEPT AND PROCEED ON R-093 TO PAKSE VOR/DME  
(PAKSE 1B)