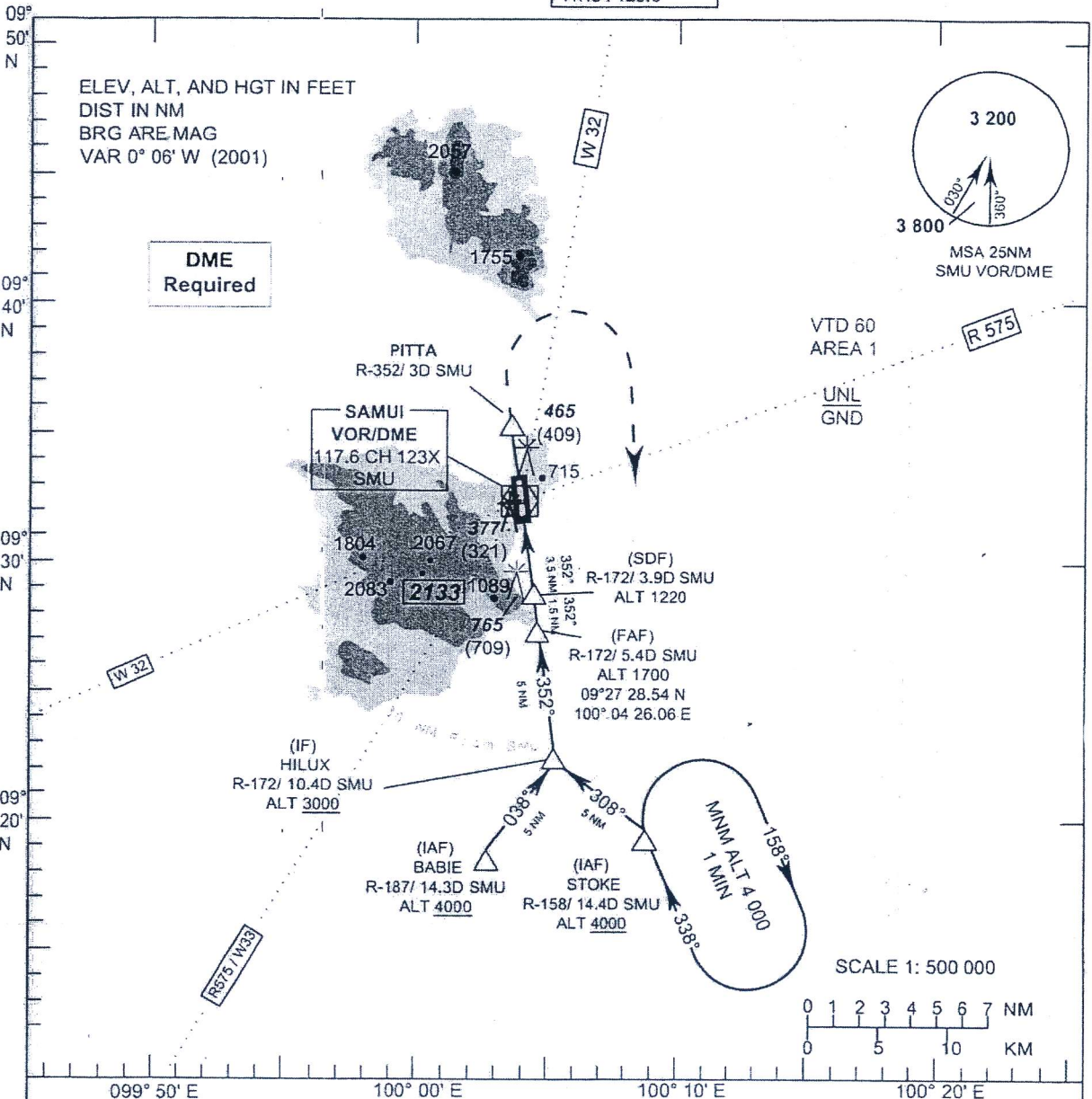


INSTRUMENT AERODROME ELEV 64 FT
APPROACH HEIGHTS RELATED TO
CHART-ICAO THR RWY 35 ELEV 56 FT

APP : 129.6, 305.4
 TWR : 118.9
 GND : 121.9
 ATIS : 128.6

SURATTANI/Samui (VTSM)
VOR RWY 35
CAT C

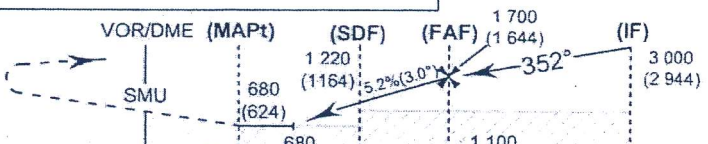


TA 11 000

Remark: During trial, operate under VMC only and reduce max cross wind limitation by 10 knots.

Missed Approach :

Climb straight ahead to 3 DME, then turn right to intercept R-158 SMU) proceed to **STOKE** at 4000 FT and hold or as directed by ATC



ELEV 56 FT (THR RWY 35)

NM FM THR 35

VOR/DME

OCA/H	C	Distance(SMU)	2.2 DME	3 DME	4 DME	5.4 DME			
Straight-in approach	680 (624)	Altitude (Height)	680 (624)	940 (884)	1260 (1204)	1700 (1644)			
Circling* (OCH AAL)	1160 (1096)	Ground Speed (GS)	knot	100	120	140	160	180	200
		FAF-MAPt 4 NM	(min/s)	2:24	2:00	1:43	1:30	1:20	1:12
* FOR CIRCLING RESTRICTIONS SEE VERSO		Rate of descent	(ft/min)	530	640	745	850	955	1 060

CHANGE : PAGE NUMBER CHANGED.