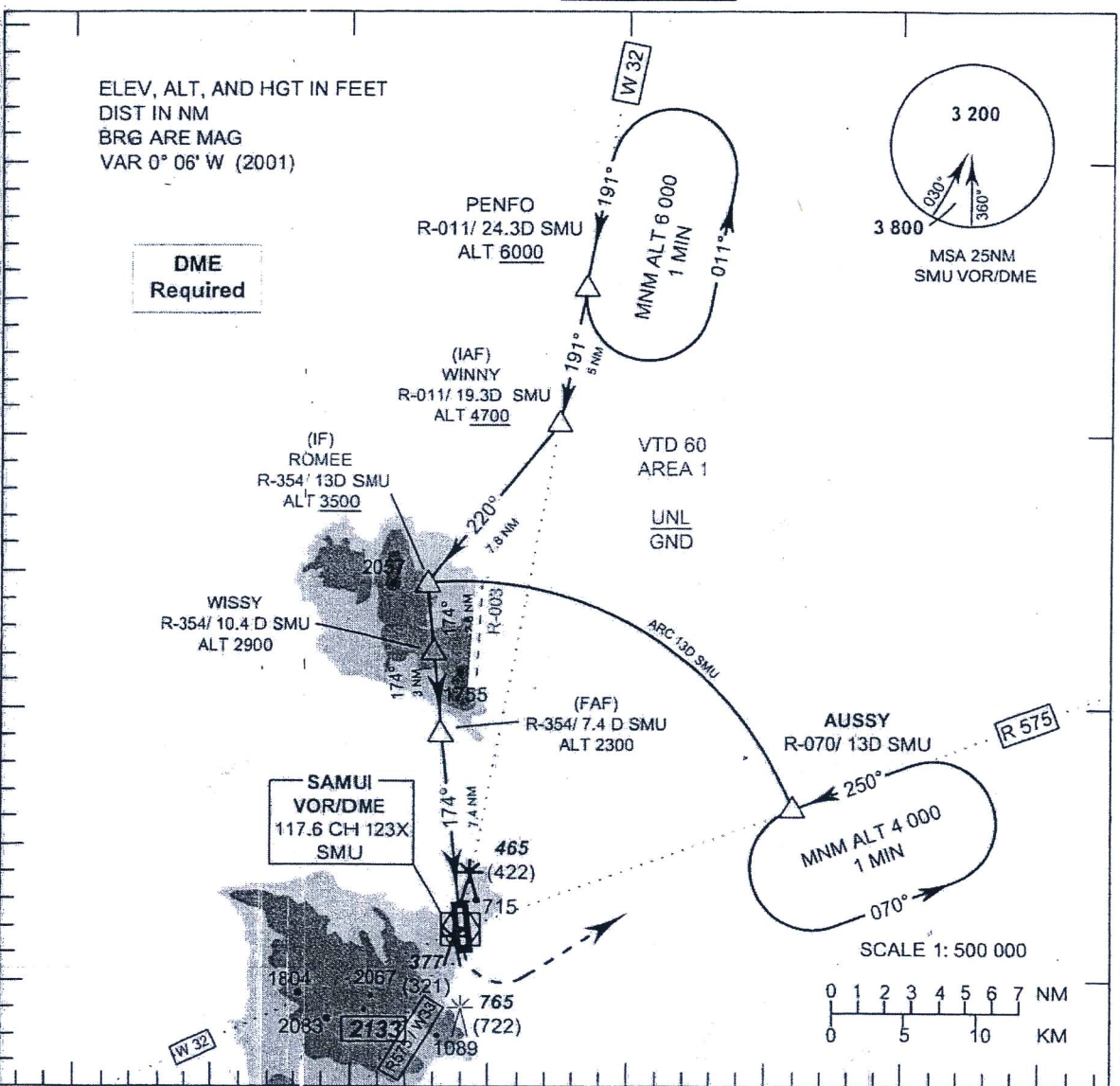


INSTRUMENT AERODROME ELEV 64 FT
APPROACH HEIGHTS RELATED TO
CHART-ICAO THR RWY 17 ELEV 43 FT

APP : 129.6, 305.4
 TWR : 118.9
 GND : 121.9
 ATIS : 128.6

SURATTANI/Samui (VTSM)
VOR RWY 17
CAT C

10° 00' N
 09° 50' N
 09° 40' N
 09° 30' N

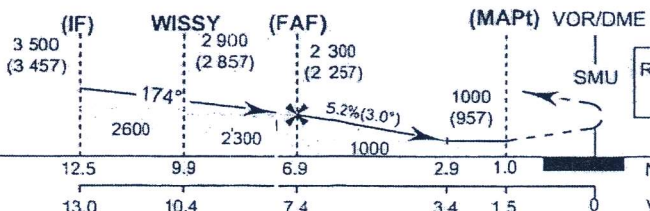


99° 50' E 100° 00' E 100° 10' E 100° 20' E

TA 11 000

Missed Approach :
 Climb straight ahead to SMU VOR , then turn left to intercept R-070 (SMU) proceed to AUSSY continue climb to 4000 FT and hold or as directed by ATC.

Remark: During trial, operate under VMC only and reduce max cross wind limitation by 10 knots.



OCA/H	C	Distance(SMU)	7.4 DME	7 DME	6 DME	5 DME	4 DME	3.4 DME	
Straight-in approach	1000 (957)	Altitude	2300 (2257)	2170 (2127)	1850 (1807)	1530 (1487)	1210 (1167)	1000 (957)	
		Ground Speed (GS)	knot	100	120	140	160	180	200
Circling* (OCH AAL)	1160 (1096)	FAF-MAPt 5.9 NM	(min/s)	3:32	2:57	2:32	2:13	1:58	1:46
* FOR CIRCLING RESTRICTIONS SEE VERSO		Rate of descent	(ft/min)	530	640	745	850	955	1'060

CHANGE : PAGE NUMBER CHANGED.