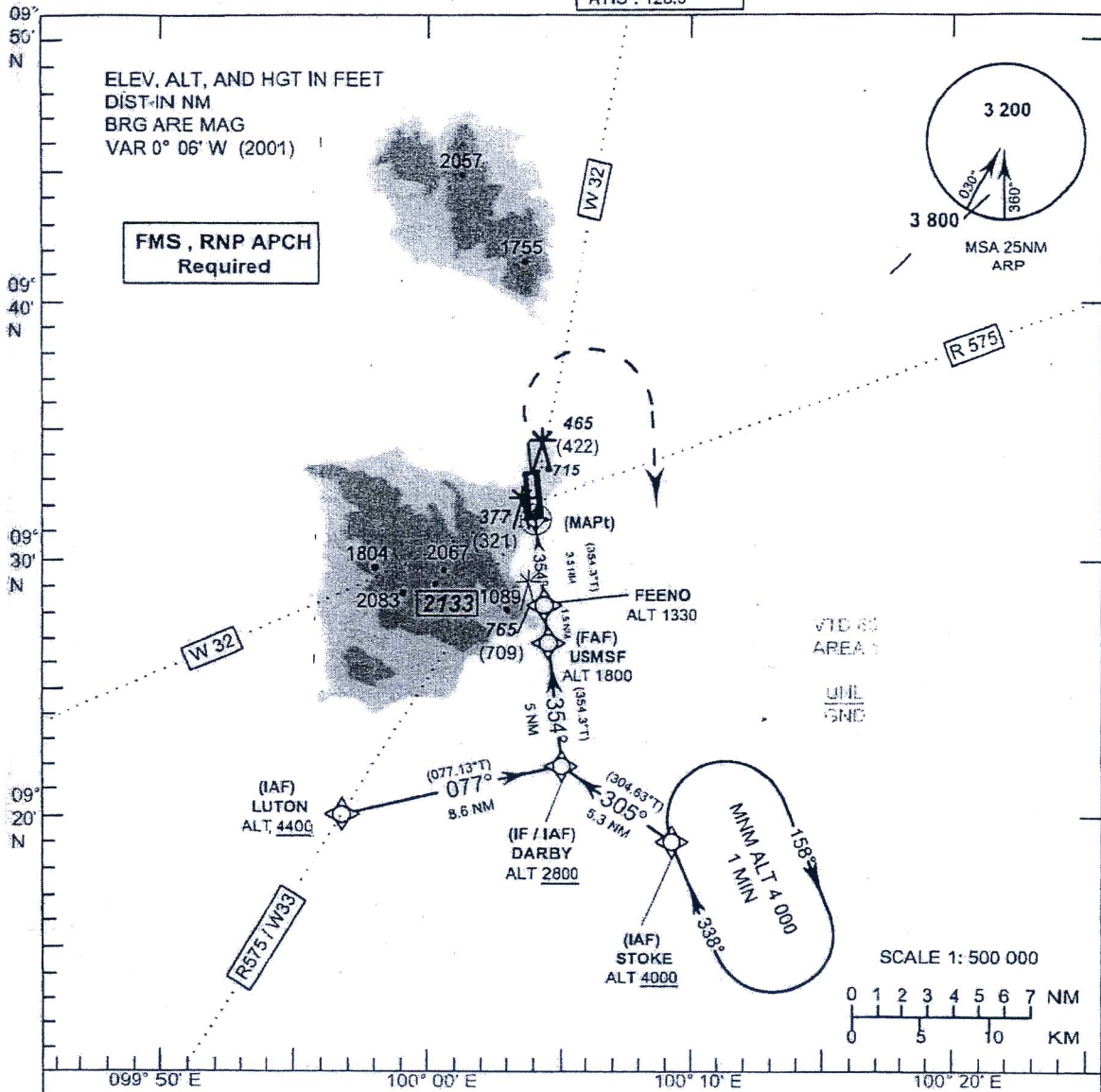


**INSTRUMENT AERODROME (ELEV 64 FT
 APPROACH HEIGHTS RELATED TO
 CHART-ICAO THR RWY 35 ELEV 56 FT**

APP : 129.6, 305.4
 TWR : 118.9
 GND : 121.9
 ATIS : 128.6

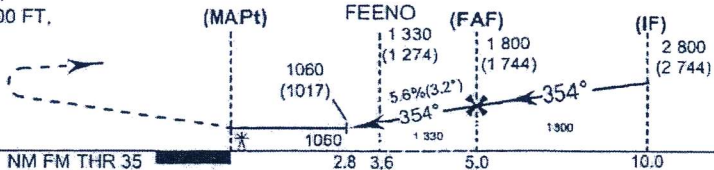
**SURATTANI/Samul (VTSM)
 RNAV (GNSS) RWY 35
 CAT A, B**



Missed Approach :
 Climb straight ahead to ALT 1400 FT,
 then turn right direct to STOKE at 4000 FT,
 and hold or as directed by ATC.

TA 11 000

ELEV 56 FT
 (THR RWY 35)



CHANGE : PAGE NUMBER CHANGED.

OCA/H	A		B	Distance to THR	2.8 NM	3 NM	3.6 NM	4 NM	FAF		
	1060 (1004)				1060 (1004)	1130 (1074)	1330 (1274)	1470 (1414)	1800 (1744)		
Circling*	1160 (1096)			Ground Speed (GS)	knot	100	120	140	160	180	200
* FOR CIRCLING RESTRICTIONS SEE VERSO				FAF-MAPt 5 NM	(min/s)	3:00	2:30	2:09	1:53	1:40	1:30
				Rate of descent	(ft/min)	565	680	795	905	1020	1135