

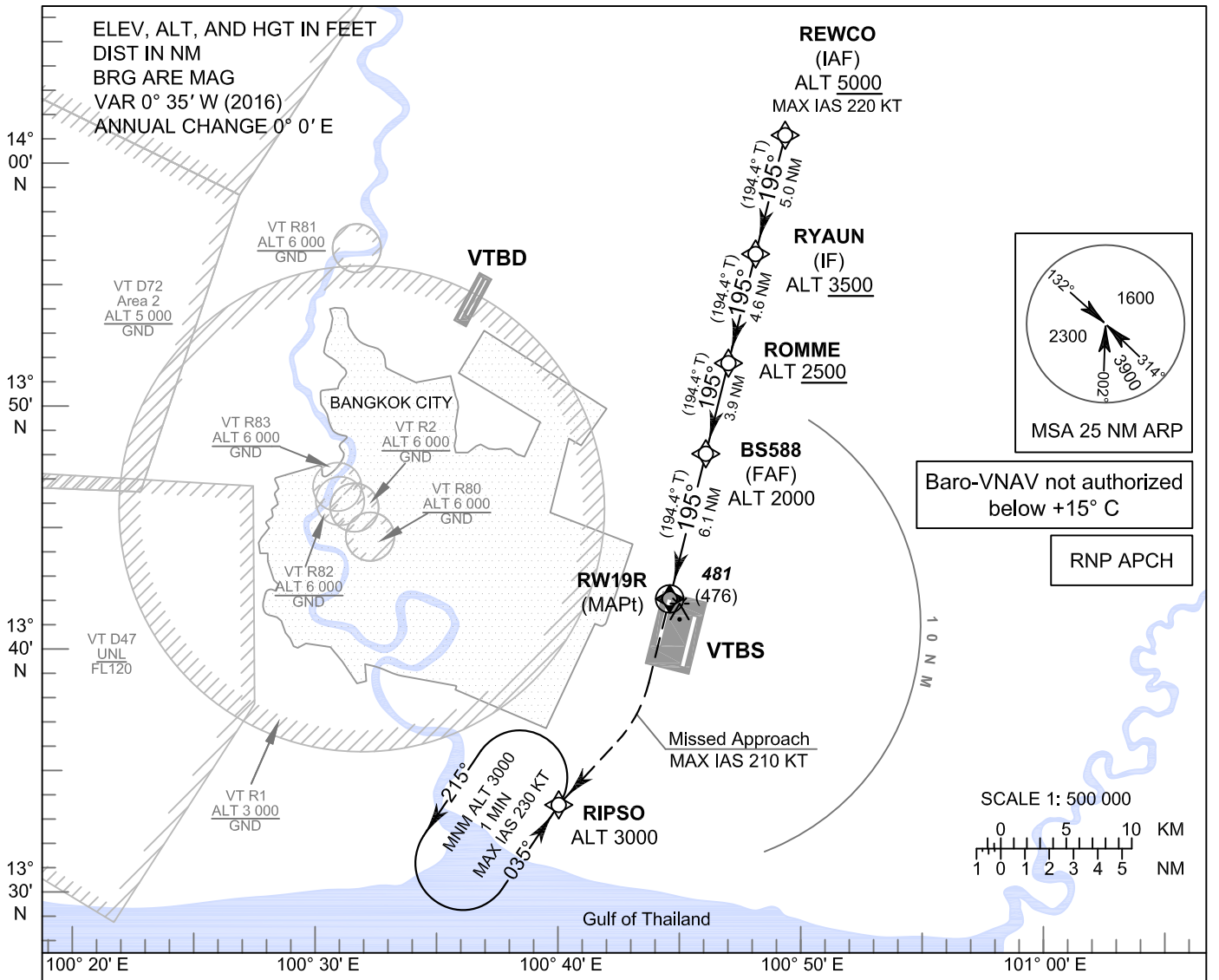
INSTRUMENT APPROACH CHART - ICAO

AERODROME ELEV 5 FT
HEIGHTS RELATED TO THR RWY19R - ELEV 5 FT

APP	: 119.1, 262.5
	: 120.3, 262.5
	: 121.7, 262.5
	: 122.35, 262.5
	: 124.35, 262.5
	: 125.2, 262.5
ARR	: 121.1
	: 126.3
TWR	: 118.2, 274.5
	: 119.0
ATIS	: 133.6, 278.6

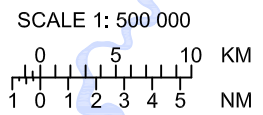
BANGKOK / Suvarnabhumi Intl (VTBS)

RNAV (GNSS) RWY19R

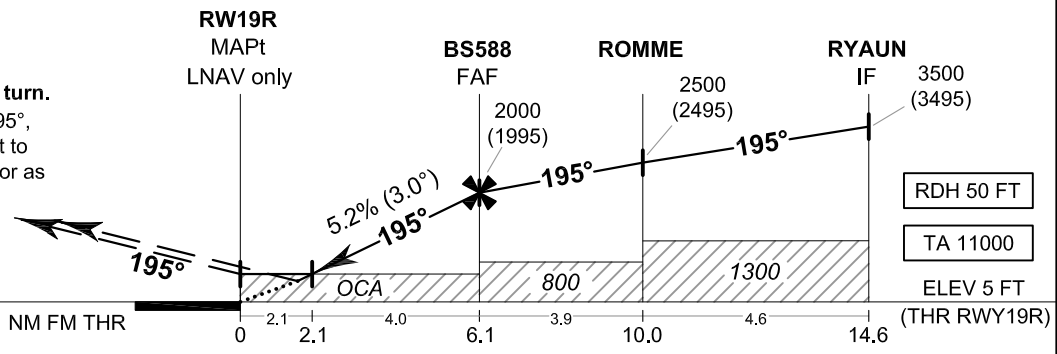


Baro-VNAV not authorized below +15° C

RNP APCH



MISSED APPROACH:
No turn before MAPt.
Speed restricted to MAX IAS 210 KT until after turn.
 Climb to 1500 FT on track 195°, then climbing right turn direct to RIPSO at 3000 FT and hold or as directed by ATC.
 (If unable to reach 3000 FT at RIPSO, continue climb in the holding pattern.)



CHANGE: IAF REVISED.

OCA/H	A	B	C	D	NM to NEXT WPT	2.1 NM	3 NM	4 NM	5 NM	6 NM	FAF
LNAV / VNAV	600 (595)				Altitude (Height)	730 (725)	1005 (1000)	1320 (1315)	1635 (1630)	1950 (1945)	2000 (1995)
LNAV	730 (725)				Ground speed	knot	70	90	100	120	140
Circling (OCH AAL)	800 (795)		900 (895)		Rate of descent FAF-MAPt 5.2%	ft/min	369	474	527	632	737