

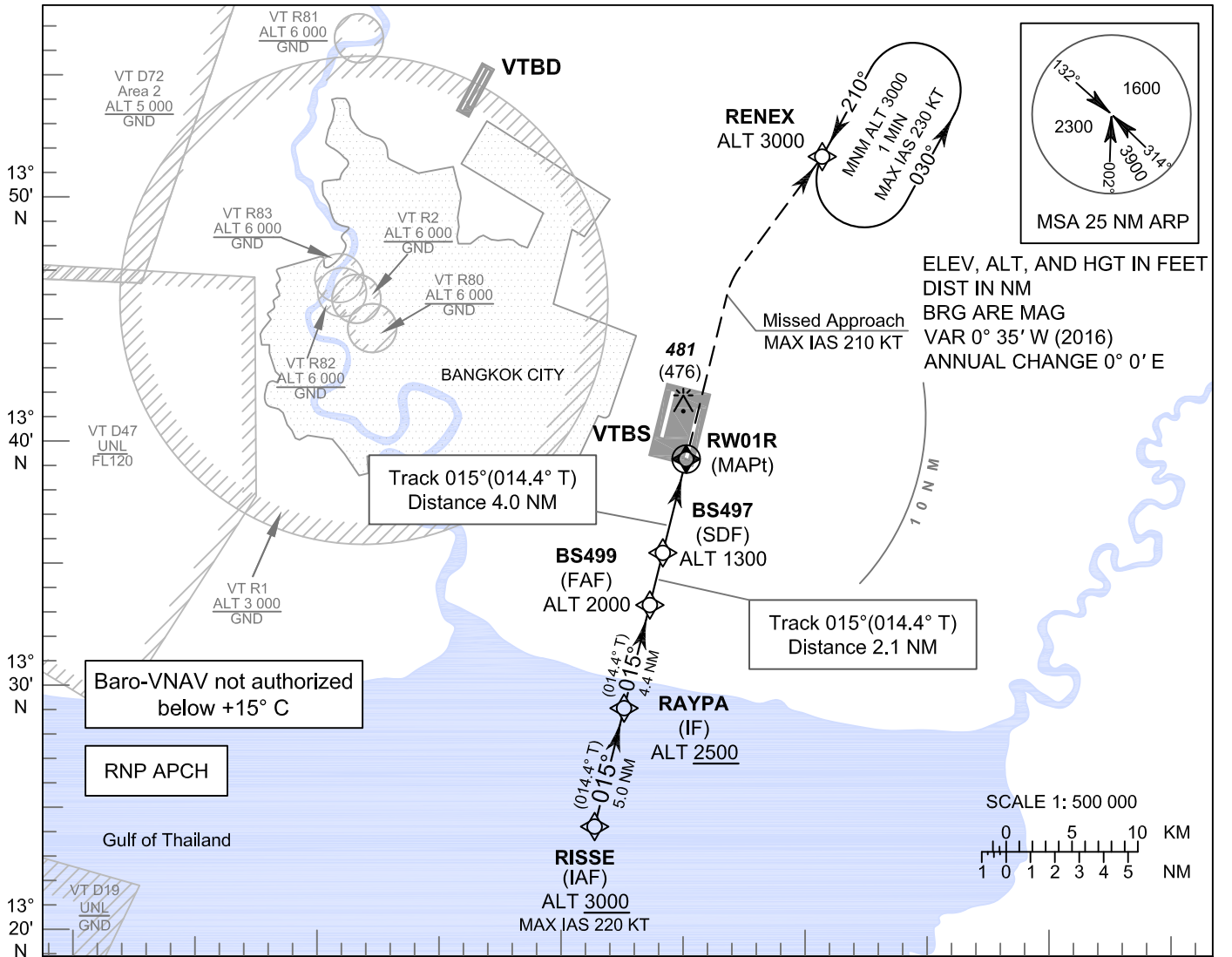
**INSTRUMENT
APPROACH
CHART - ICAO**

**AERODROME ELEV 5 FT
HEIGHTS RELATED TO
THR RWY01R - ELEV 5 FT**

BANGKOK / Suvarnabhumi Intl (VTBS)

RNAV (GNSS) RWY01R

| | |
|------|-----------------|
| APP | : 119.1, 262.5 |
| | : 120.3, 262.5 |
| | : 121.7, 262.5 |
| | : 122.35, 262.5 |
| | : 124.35, 262.5 |
| | : 125.2, 262.5 |
| ARR | : 121.1 |
| | : 126.3 |
| TWR | : 118.2, 274.5 |
| | : 119.0 |
| ATIS | : 133.6, 278.6 |



Baro-VNAV not authorized below +15° C

RNP APCH

Gulf of Thailand

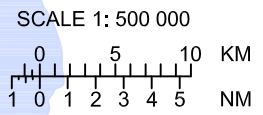
VT D19 UNL GND

RDH 50 FT

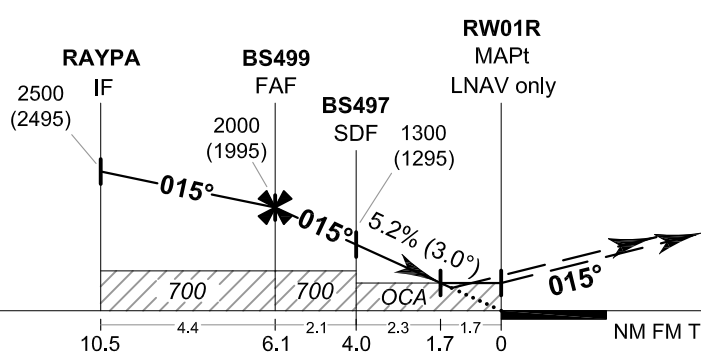
TA 11000

ELEV 5 FT (THR RWY01R)

ELEV, ALT, AND HGT IN FEET
DIST IN NM
BRG ARE MAG
VAR 0° 35' W (2016)
ANNUAL CHANGE 0° 0' E



CHANGE: IAF AND IF REVISED.



MISSED APPROACH:
No turn before MAPt.
Speed restricted to MAX IAS 210 KT until after turn.
Climb to 1500 FT on track 015°, then climbing right turn direct to RENEX at 3000 FT and hold or as directed by ATC.
(If unable to reach 3000 FT at RENEX, continue climb in the holding pattern.)

| OCA/H | A | B | C | D | NM to NEXT WPT | FAF | 6 NM | 5 NM | 4 NM | 3 NM | 2 NM | 1.7 NM |
|--------------------|-----------|---|-----------|---|-------------------------------|-------------|-------------|-------------|-------------|-------------|-----------|-----------|
| LNAV / VNAV | 540 (535) | | | | Altitude (Height) | 2000 (1995) | 1950 (1945) | 1635 (1630) | 1320 (1315) | 1005 (1000) | 690 (685) | 600 (595) |
| LNAV | 600 (595) | | | | Ground speed | knot | 70 | 90 | 100 | 120 | 140 | 160 |
| Circling (OCH AAL) | 800 (795) | | 900 (895) | | Rate of descent FAF-MAPt 5.2% | ft/min | 369 | 474 | 527 | 632 | 737 | 843 |