

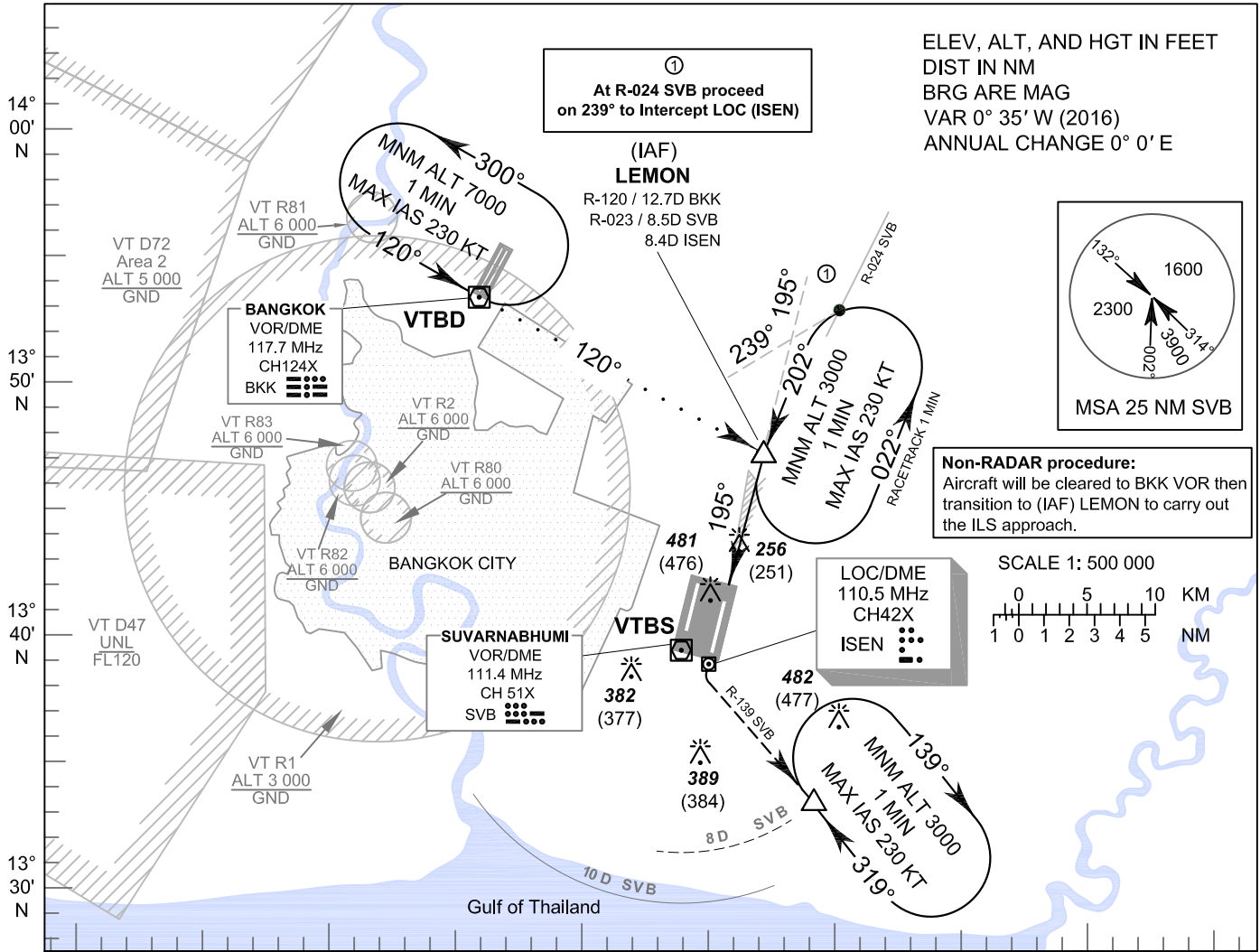
**INSTRUMENT  
APPROACH  
CHART - ICAO**

**AERODROME ELEV 5 FT  
HEIGHTS RELATED TO  
THR RWY19L - ELEV 5 FT**

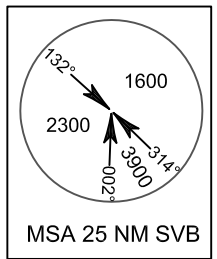
APP : 119.1, 262.5  
 : 120.3, 262.5  
 : 121.7, 262.5  
 : 122.35, 262.5  
 : 124.35, 262.5  
 : 125.2, 262.5  
 ARR : 121.1  
 : 126.3  
 TWR : 118.2, 274.5  
 : 119.0  
 ATIS : 133.6, 278.6

**BANGKOK / Suvarnabhumi Intl (VTBS)**

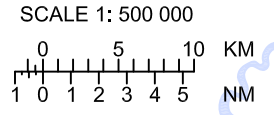
**ILS or LOC y RWY19L  
CAT II**



ELEV, ALT, AND HGT IN FEET  
 DIST IN NM  
 BRG ARE MAG  
 VAR 0° 35' W (2016)  
 ANNUAL CHANGE 0° 0' E

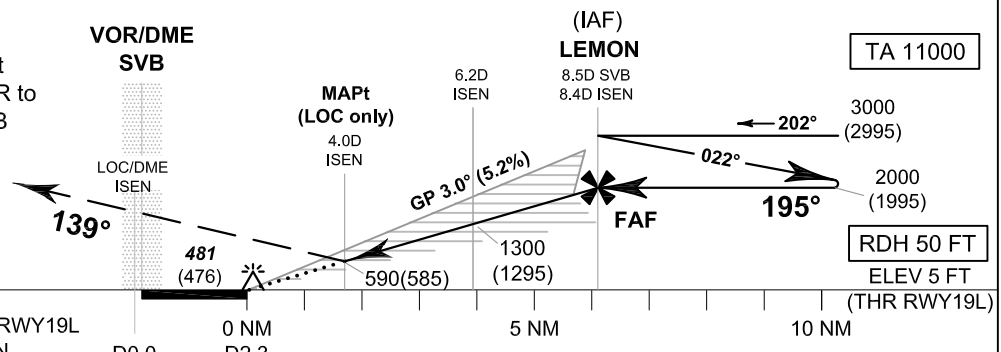


**Non-RADAR procedure:**  
 Aircraft will be cleared to BKK VOR then transition to (IAF) LEMON to carry out the ILS approach.



**MISSED APPROACH:**

Climb straight ahead to intercept and proceed on R-139 SVB VOR to 3000 FT and hold at 8 DME SVB VOR Fix or as directed by ATC.  
 (If unable to reach 3000 FT at R-139 / 8D SVB, continue climb in the holding pattern.)



		NM FM THR RWY19L				DME FM ISEN		D0.0		0 NM		5 NM		10 NM	
		A	B	C	D	ISEN	DME	MAPt	5.0	6.0	7.0	8.0	FAF		
Straight-in Approach	CAT I	205 (200)				Altitudes	590	920	1240	1550	1870	2000			
	CAT II	105 (100)				Speed / Knots		100	120	140	160	180			
LOC only		590 (585)				FAF - MAPt 4.4 NM		2 : 38	2 : 12	1 : 53	1 : 39	1 : 28			
Circling (OCH AAL)		800 (795)		900 (895)		Rate of descent (ft/min)		530	640	745	850	955			

CHANGE: REALIGNMENT, MISSED APPROACH INSTRUCTION, LEMON RADIAL.