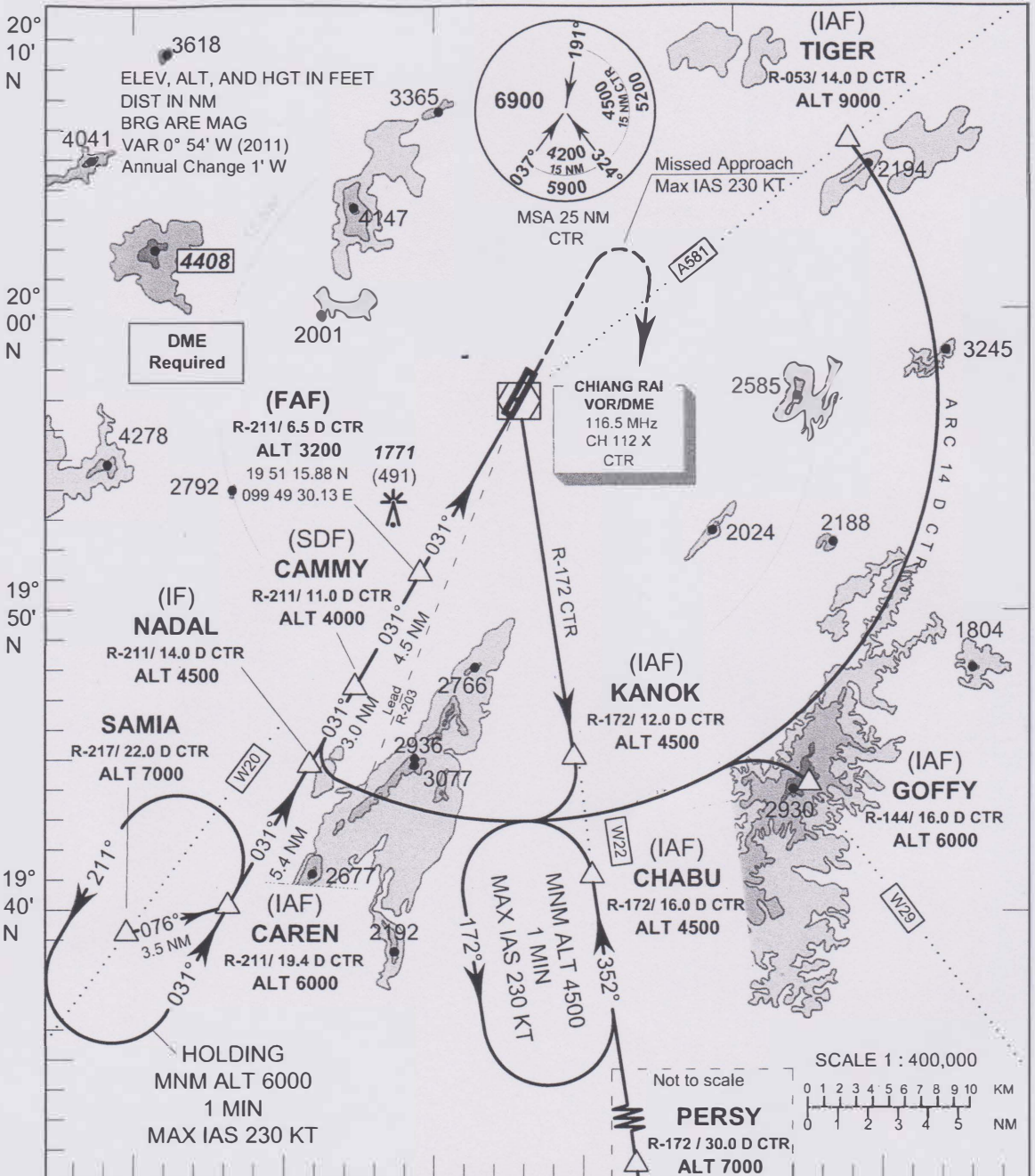


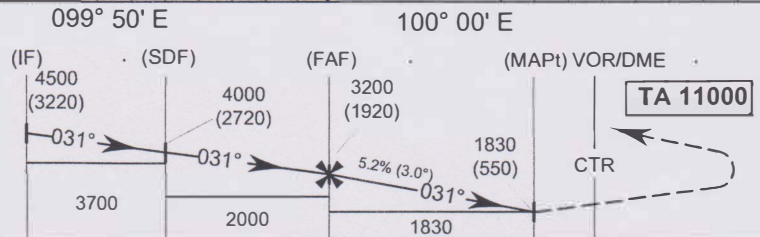
INSTRUMENT APPROACH CHART-ICAO
AERODROME ELEV 1280 FT
 HEIGHTS RELATED TO AERODROME ELEV

APP : 120.05, 257.80
 TWR : 118.40, 236.60

CHIANG RAI/
MAE FAH LUANG-Chiang Rai Intl (VTCT)
VOR RWY03



099° 40' E
Missed Approach :
No Turn Before MAPt. Speed
restricted to MAX IAS 230 KT
until after turn.
 Climb straight ahead to 2600 FT,
 then turn right to intercept outbound
 R-172 CTR VOR and proceed to
CHABU at 4500 FT and hold or as
 directed by ATC.



ELEV 1280 FT (THR RWY 03) 13.4 10.4 5.9 1.6 0 NM FM THR 03
 14.0 11.0 6.5 2.2 0.6 0 DME FM CTR

OCA/H	A	B	C	D	Distance(CTR)	FAF	6 D	5 D	4 D	3 D	2.2 D	
Straight-in approach	1830 (550)				Altitude (Height)	3200 (1920)	3035 (1755)	2720 (1440)	2405 (1125)	2090 (810)	1830 (550)	
					Ground Speed	knot	70	90	100	120	140	160
Circling	1850 (570)	2470 (1190)			Rate of descent	(ft/min)	369	474	527	632	737	843