

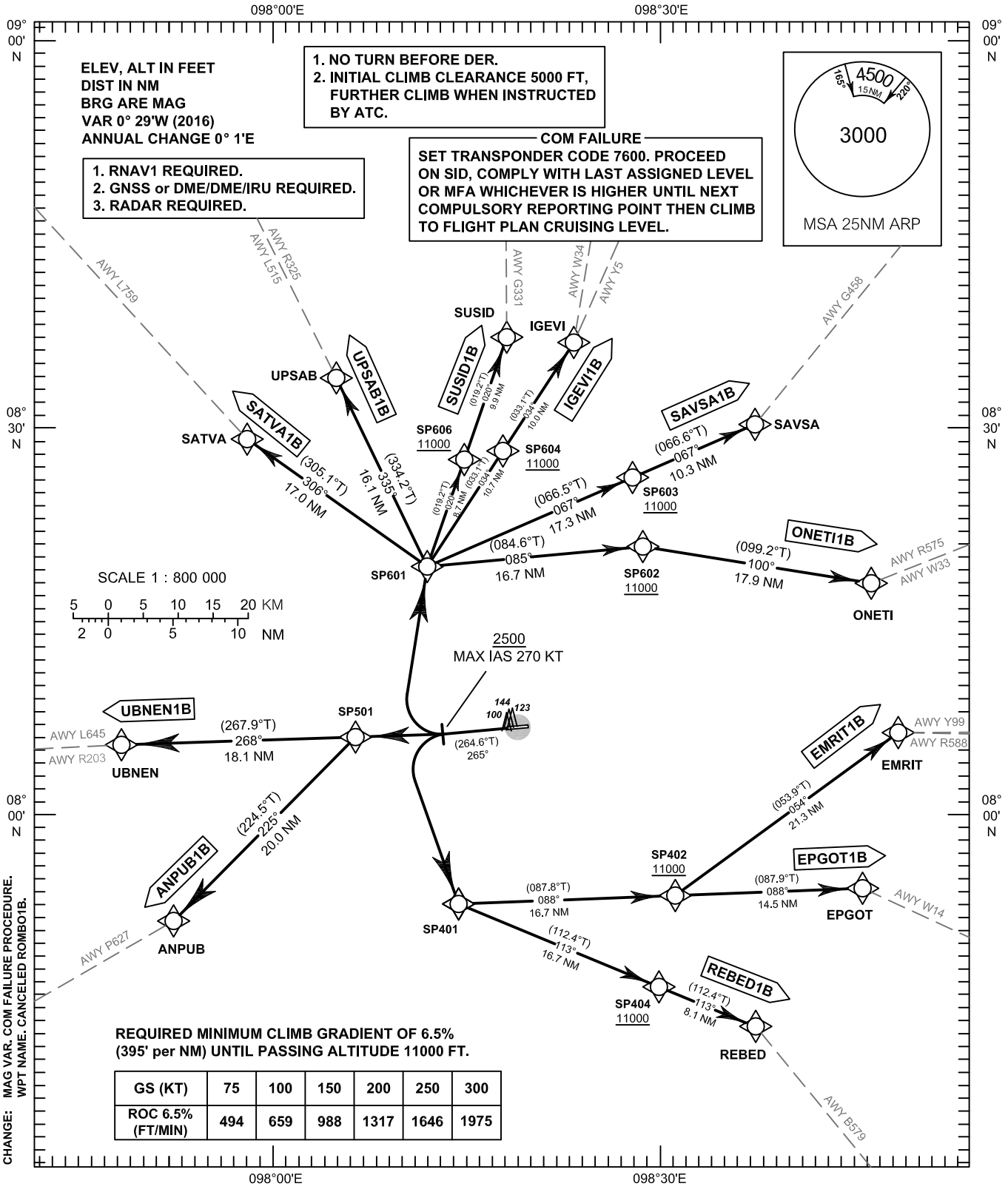
STANDARD DEPARTURE CHART - INSTRUMENT (SID) - ICAO

TRANSITION ALTITUDE
11000 FT

APP : 124.7, 284.0
TWR : 118.1, 236.6

**PHUKET/Phuket Intl (VTSP)
RNAV RWY27**

ANPUB1B EMRIT1B EPGOT1B IGEVI1B ONET11B REBED1B
SATVA1B SAVSA1B SUSID1B UBEN1B UPSAB1B

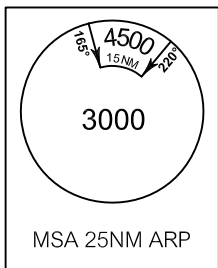


ELEV, ALT IN FEET
DIST IN NM
BRG ARE MAG
VAR 0° 29' W (2016)
ANNUAL CHANGE 0° 1' E

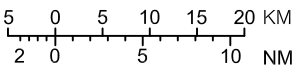
1. NO TURN BEFORE DER.
2. INITIAL CLIMB CLEARANCE 5000 FT,
FURTHER CLIMB WHEN INSTRUCTED
BY ATC.

1. RNAV1 REQUIRED.
2. GNSS or DME/DME/IRU REQUIRED.
3. RADAR REQUIRED.

COM FAILURE
SET TRANSPONDER CODE 7600. PROCEED
ON SID, COMPLY WITH LAST ASSIGNED LEVEL
OR MFA WHICHEVER IS HIGHER UNTIL NEXT
COMPULSORY REPORTING POINT THEN CLIMB
TO FLIGHT PLAN CRUISING LEVEL.



SCALE 1 : 800 000



2500
MAX IAS 270 KT

REQUIRED MINIMUM CLIMB GRADIENT OF 6.5%
(395' per NM) UNTIL PASSING ALTITUDE 11000 FT.

GS (KT)	75	100	150	200	250	300
ROC 6.5% (FT/MIN)	494	659	988	1317	1646	1975

CHANGE: MAG VAR. COM FAILURE PROCEDURE. WPT NAME. CANCELED ROMBOTS.