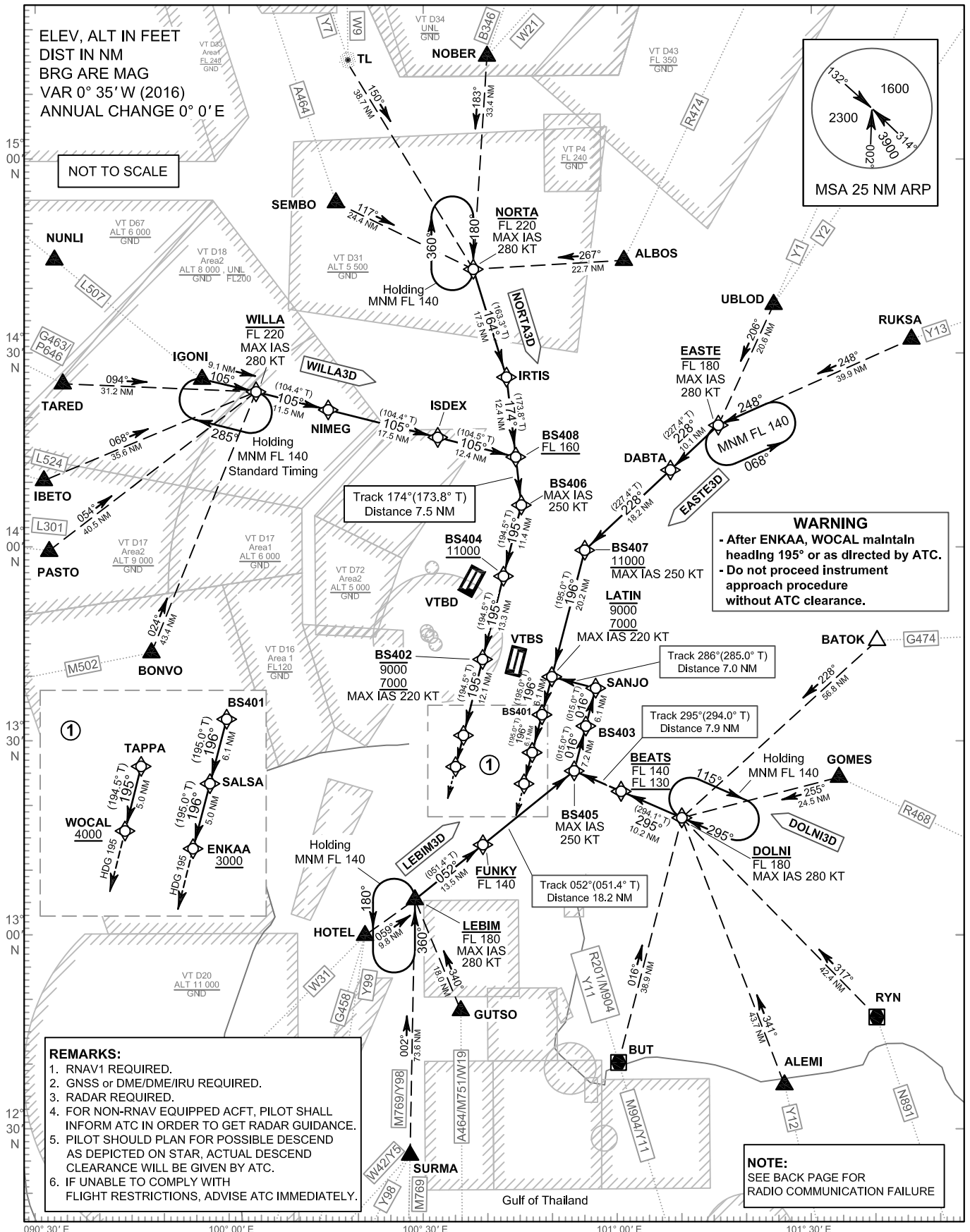


**STANDARD ARRIVAL CHART-
INSTRUMENT (STAR) - ICAO**

TRANSITION ALTITUDE 11000 FT	APP : 119.1, 262.5
SPEED RESTRICTION MAX IAS 250 KT AT OR BELOW ALT 10000 FT UNLESS OTHERWISE AUTHORIZED BY ATC.	: 120.3, 262.5
	: 121.7, 262.5
	: 122.35, 262.5
	: 124.35, 262.5
	: 125.2, 262.5
	ARR : 121.1
	: 126.3
	TWR : 118.2, 274.5
	: 119.0
	ATIS : 133.6, 278.6

**BANGKOK/Suvarnabhumi Intl (VTBS)
RNAV RWY01L/01R**

DOLNI3D EASTE3D
LEBIM3D NORTA3D WILLA3D



CHANGE: Y5, Y98 AND Y99 ADDED.