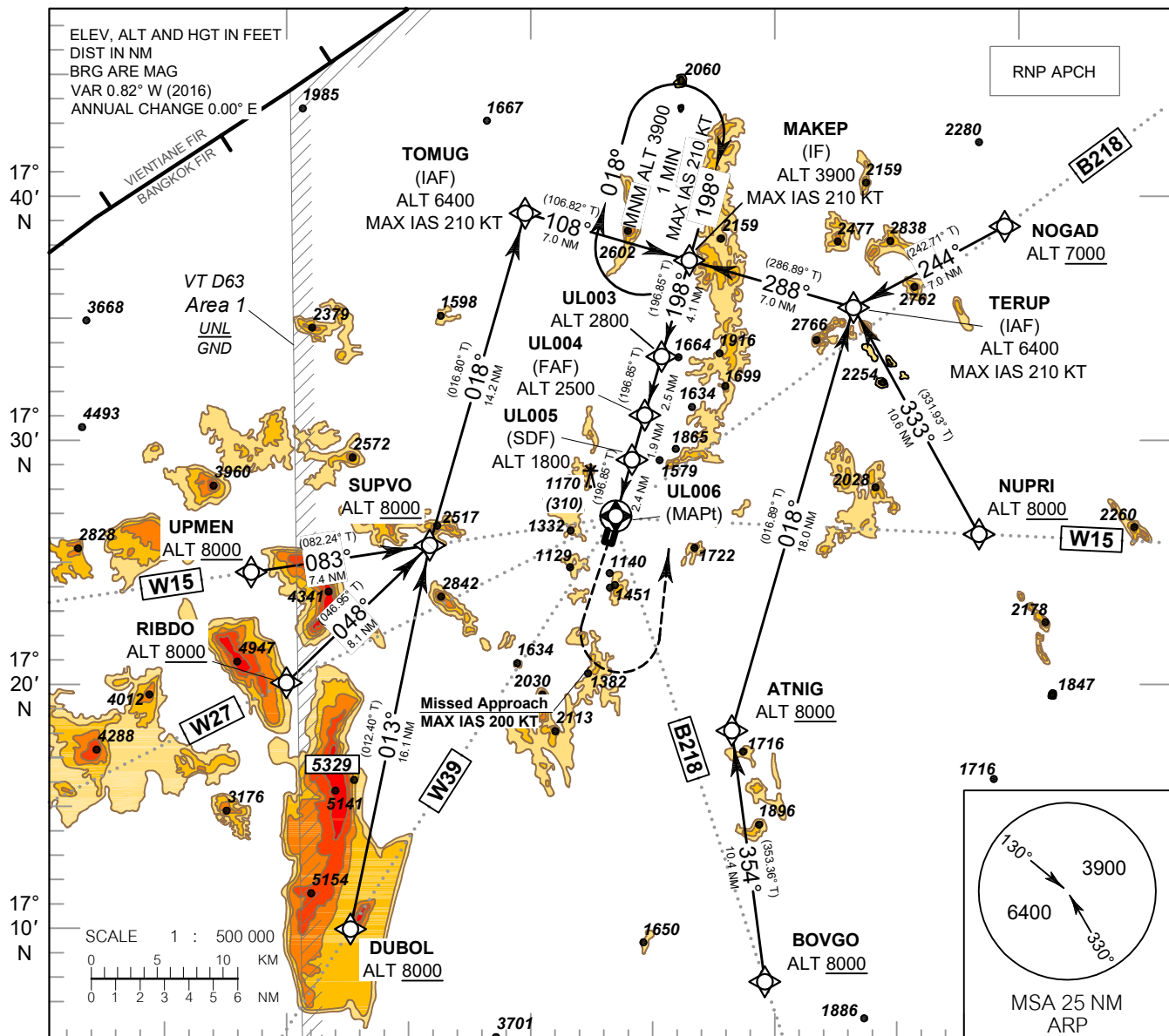


**INSTRUMENT APPROACH CHART - ICAO** **AERODROME ELEV 860 FT**  
**HEIGHTS RELATED TO AERODROME ELEV**

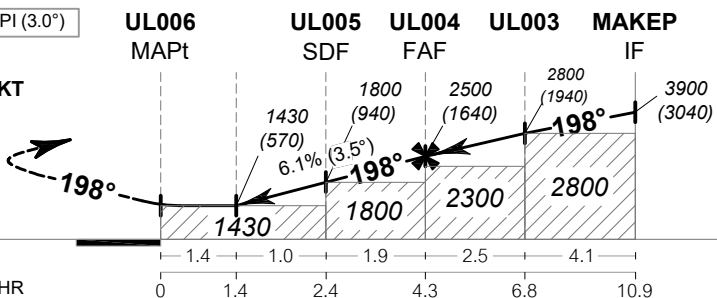
APP : 122.55  
 TWR : 118.35 , 121.5

**LOEI / Loei (VTUL)**  
**RNAV (GNSS) RWY19**



Descent Gradient not coincident with PAPI (3.0°)

**MISSED APPROACH :**  
 Speed restricted to MAX IAS 200 KT until after turn.  
 Climb on track 198° to 2000 FT, then turn left direct to MAKEP at 3900 FT and hold or as directed by ATC.



OCA/H	A	B	C	D	NM to NEXT WPT	1.4NM	2NM	3NM	4NM	FAF			
LNAV		1430 (570)				Altitude (Height)	1430 (570)	1650 (790)	2020 (1160)	2395 (1535)	2500 (1640)		
					Ground speed	knot	70	90	100	120	140	160	
Circling (OCH AAL)		2400 (1540)				Rate of descent	(ft/min)	432	556	618	741	865	988