

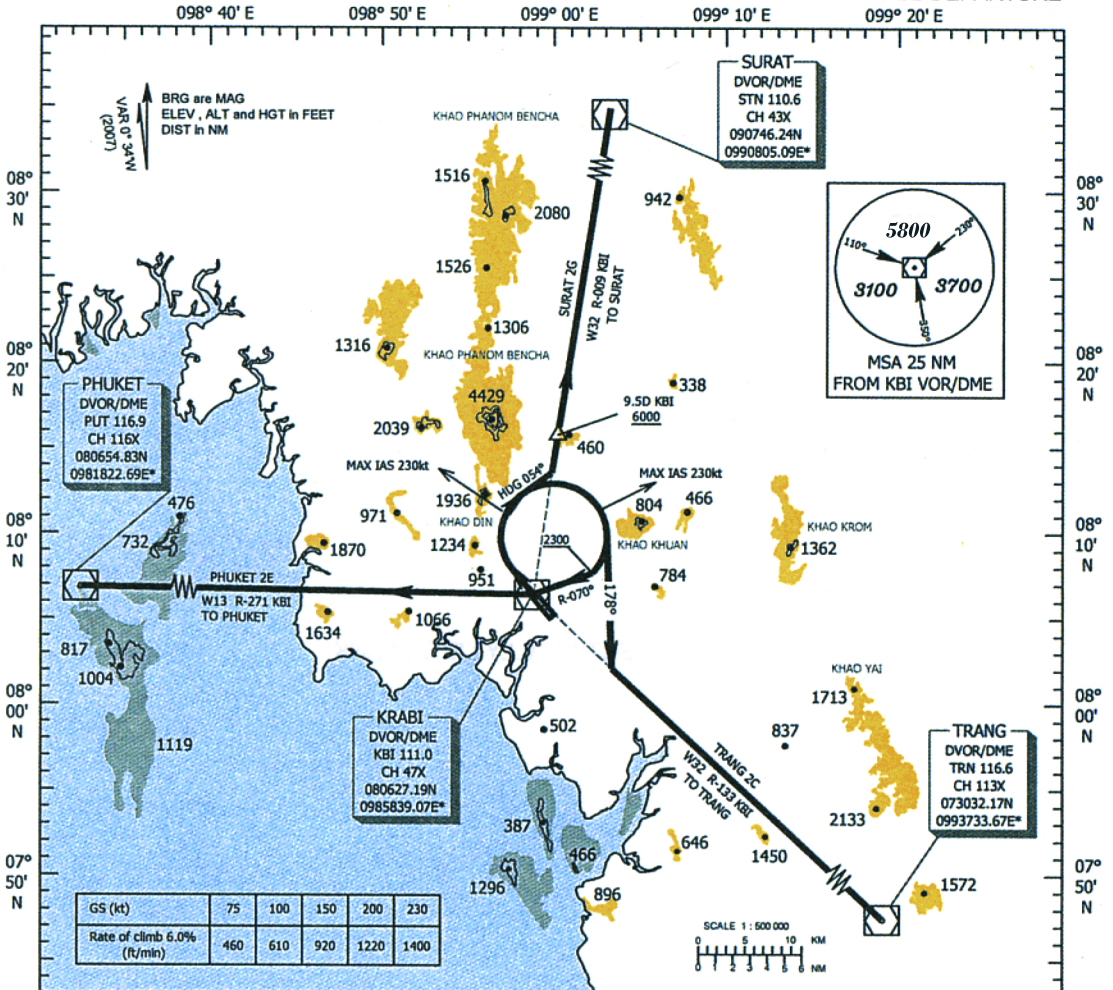
STANDARD INSTRUMENT DEPARTURE (SID)
CHART - ICAO

KRABI / Krabi (VTSG)
RWY32

TRANSITION ALTITUDE
11 000 ft

APP : 120.05
TWR : 118.8 , 236.8

SURAT 2G DEPARTURE
TRANG 2C DEPARTURE
PHUKET 2E DEPARTURE



COMMUNICATION FAILURE PROCEDURE

- Squawk A7600
- Comply with last assigned level until next reporting point then climb to flight plan cruising level.

WARNING

- No turn before Departure End of Runway
- Min Procedure Design Gradient = 6.0 %
- Max IAS 230kt for turning after departure

SURAT TWO GOLF : Climb on runway heading until 800ft, then continue climbing
(SURAT 2G) turn right heading 054° to intercept and proceed along KBI
R-009 outbound and maintain 6000ft or above at 9.5D KBI to
SURAT DVOR/DME

TRANG TWO CHALIE : Climb on runway heading until 800ft, then continue climbing
(TRANG 2C) turn right heading 178° to intercept and proceed along KBI
R-133 to TRANG DVOR/DME

PHUKET TWO ECHO : Climb on runway heading until 800ft, then continue climbing
(PHUKET 2E) turn right to intercept KBI R-070 at 2300ft or above to KBI and
proceed along KBI R-271 outbound to PHUKET DVOR/DME