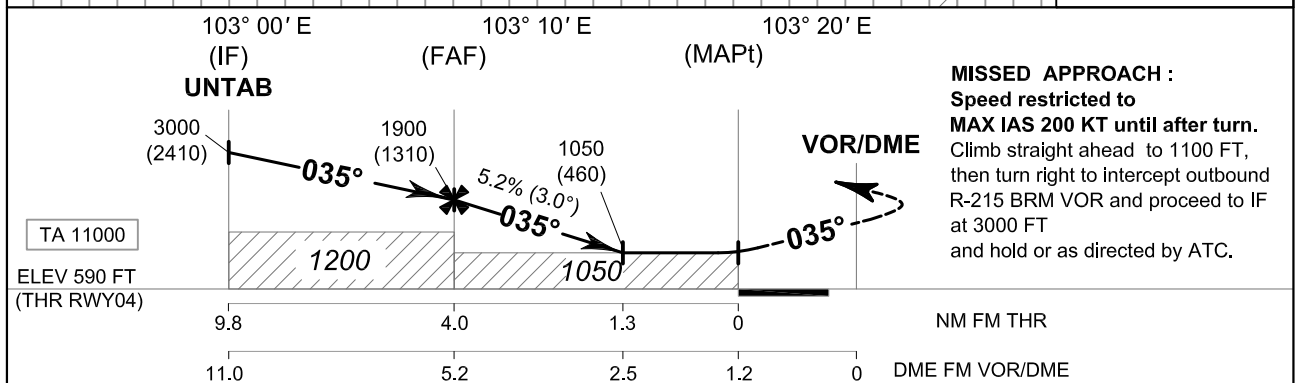
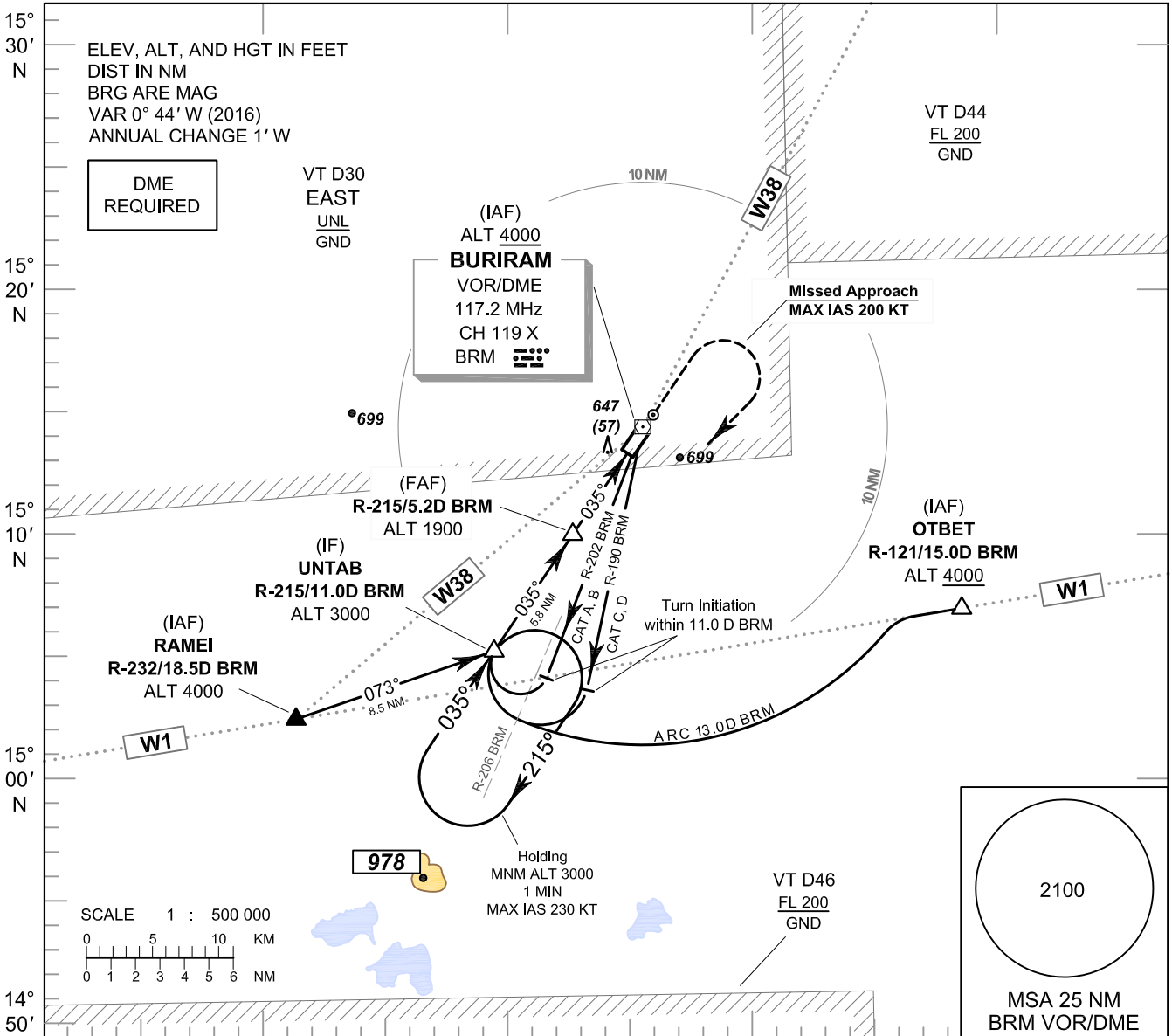


INSTRUMENT APPROACH CHART - ICAO **AERODROME ELEV 590 FT**
HEIGHTS RELATED TO THR RWY04 - ELEV 590 FT

APP : 125.55 MHz
 TWR : 122.5 MHz
 ATIS : 303 kHz

BURI RAM / Buri ram (VTUO)

VOR RWY04



OCA/H	A	B	C	D	Distance (BRM)	FAF	5D	4D	3D	2.5D		
						1900 (1310)	1840 (1250)	1525 (935)	1210 (620)	1050 (460)		
Straight - in approach	1050 (460)				Altitude (Height)	1900 (1310)	1840 (1250)	1525 (935)	1210 (620)	1050 (460)		
					Ground speed	knot	70	90	100	120	140	160
Circling (OCH AAL)	1100 (510)		1300 (710)		Rate of descent 5.2%	ft/min	369	474	527	632	737	843