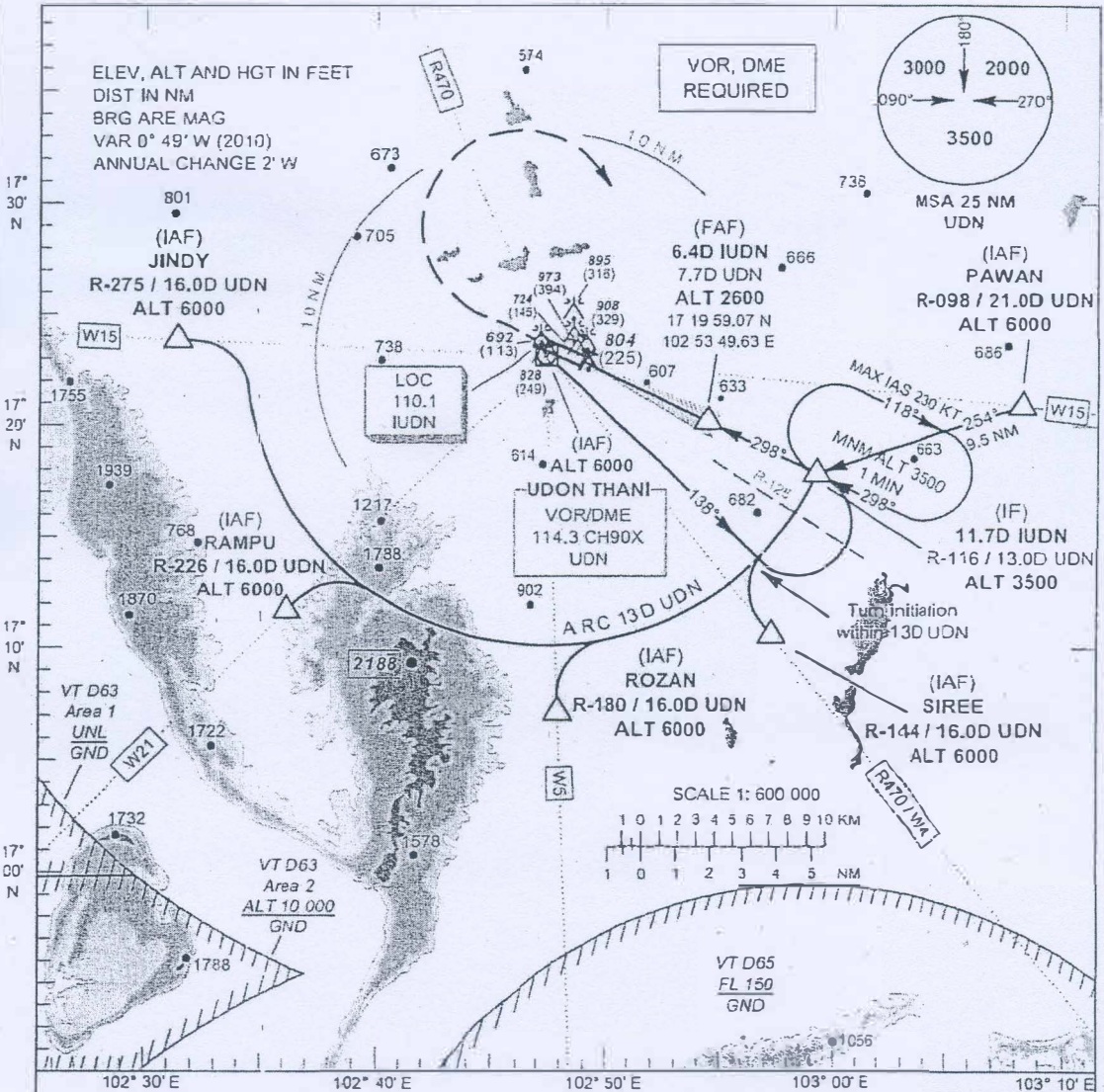


INSTRUMENT AERODROME ELEV 579 FT
APPROACH HEIGHTS RELATED TO
CHART - ICAO THR RWY 30 - ELEV 579 FT

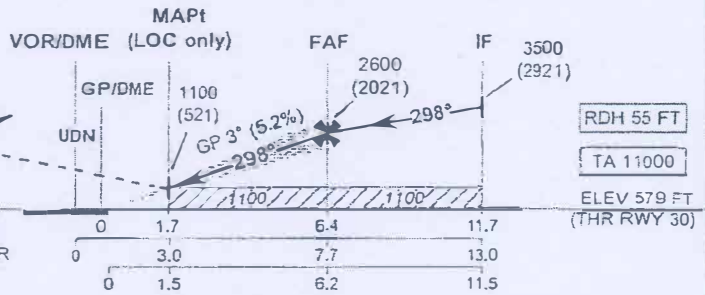
APP : 126.2 , 265.9
 TWR : 122.5 , 355.4
 GND : 121.9 , 275.8

UDON THANI / Udon thani (VTUD)

ILS or LOC RWY30



MISSED APPROACH:
 No turn before MAPt
 Climb straight ahead to 1900 (1321) FT then turn right to IF at 3500 (2921) FT and hold or as directed by ATC.



OCA/H		A	B	C	D	Distance (IUDN)	1.7 D	2 D	3 D	4 D	5 D	6 D	FAF
Straight-in Approach	CAT I	840 (261)	850 (271)	860 (281)	870 (291)	Altitude (Height)	1100 (521)	1205 (626)	1525 (946)	1845 (1266)	2160 (1581)	2480 (1901)	2600 (2021)
		LOC only				1100 (521)							
Circling* (OCH AAL)		1300 (721)				Ground speed (GS)	knot	100	120	140	160	180	200
*FOR CIRCLING RESTRICTIONS SEE VERSO						Rate of descent (f/min)	530	630	740	845	950	1055	