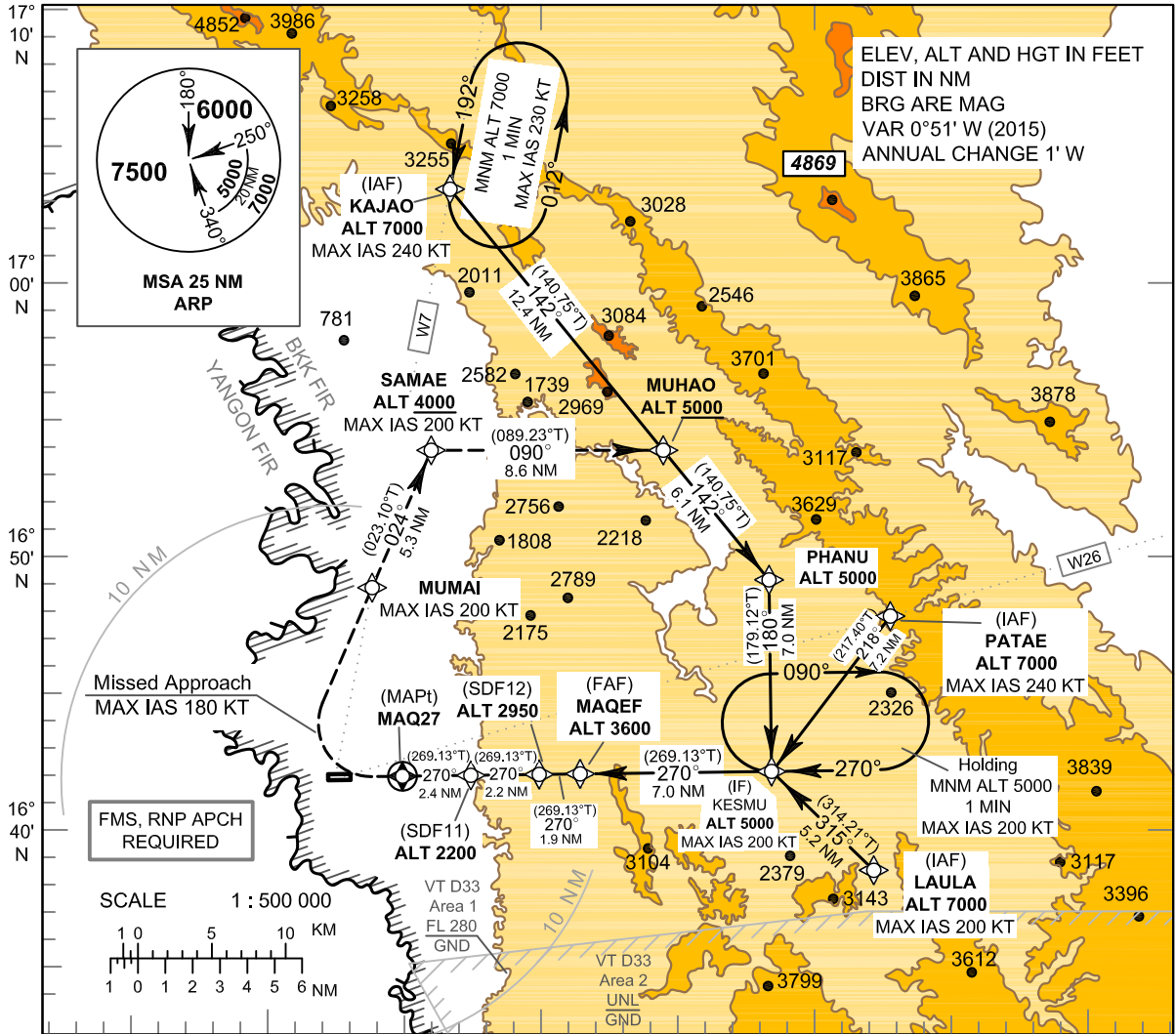


**INSTRUMENT
APPROACH
CHART - ICAO**

**AERODROME ELEV 690 FT
HEIGHTS RELATED TO
THR RWY 27 - ELEV 676 FT**

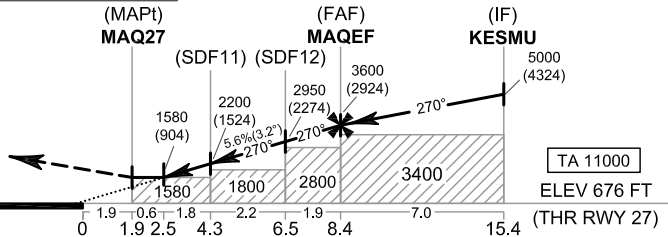
APP : 120.65
TWR : 118.35, 236.6

**TAK / Mae Sot (VTM)
RNAV (GNSS) RWY27**



**CAUTION : 1. Descent gradient not coincident with PAPI
2. Missed approach procedure shall be within BKK FIR only**

MISSED APPROACH :
No turn before MAPT.
Speed restricted to MAX IAS 180 KT until after turn.
 At MAPT, turn right climb to MUMAI, then to SAMAE, then turn right to MUHAO, then turn right to PHANU at 5000 FT, then proceed to IF at 5000 FT and hold or as directed by ATC.



OCA/H	A	B	C	NM FM THR 27									
				NM to THR 27	2.5 NM	3 NM	SDF11	5 NM	SDF12	7 NM	8 NM	FAF	
LNAV	1580 (904)			Altitude (Height)	1580 (904)	1745 (1069)	2200 (1524)	2425 (1749)	2950 (2274)	3105 (2429)	3450 (2774)	3600 (2924)	
Circling (OCH AAL)	NOT AUTHORIZED			Ground speed	knot			70	90	100	120	140	160
				Rate of descent (5.6%)	(ft/min)			397	510	567	681	794	907