

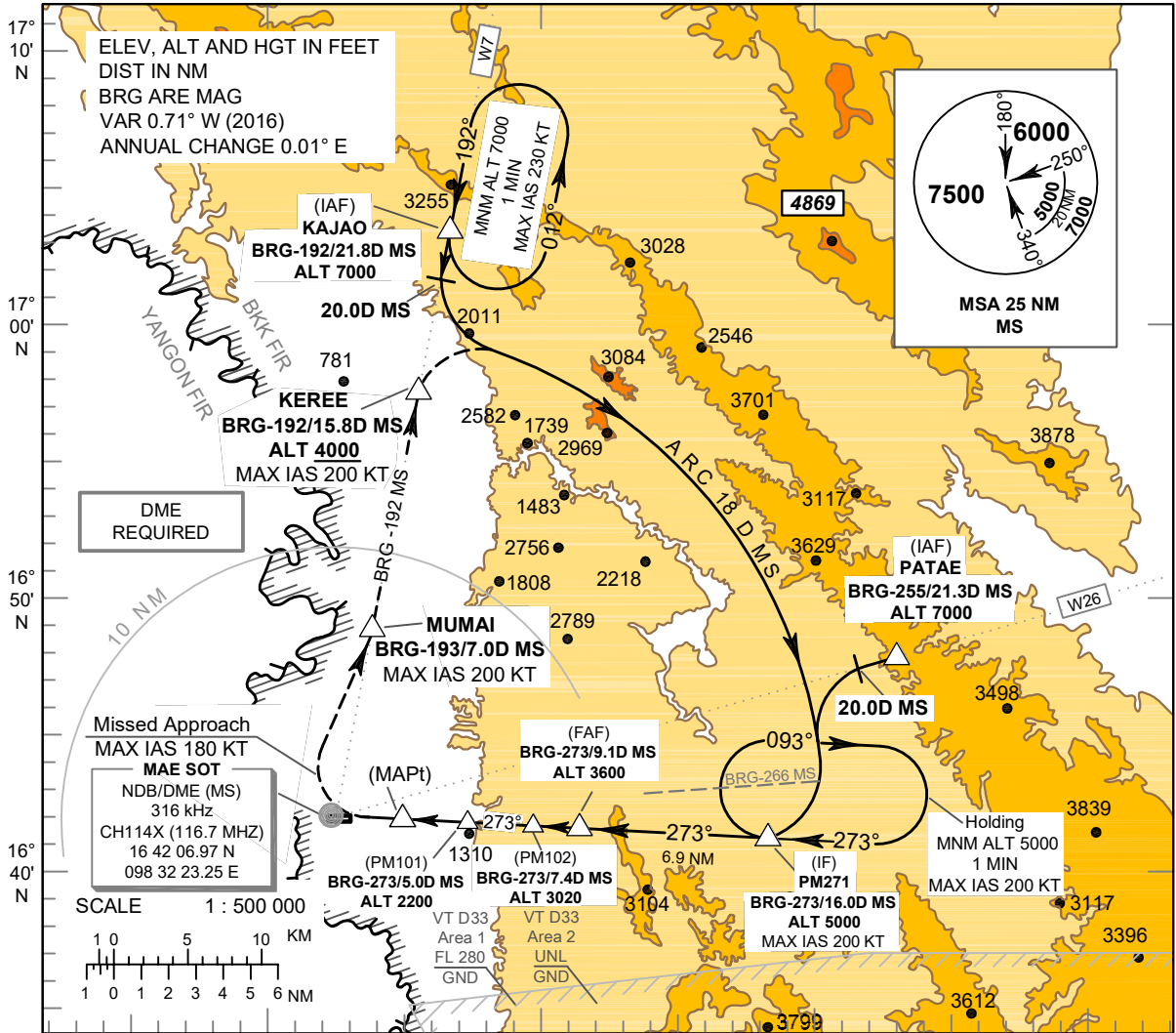
INSTRUMENT APPROACH CHART - ICAO

AERODROME ELEV 690 FT
HEIGHTS RELATED TO THR RWY 27 - ELEV 676 FT

APP : 120.65
 TWR : 118.35, 236.6

TAK / Mae Sot (VTM)

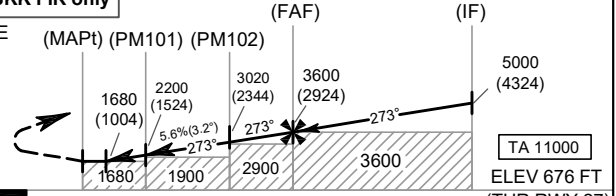
NDB RWY27



CAUTION : 1. Descent gradient not coincident with PAPI
 2. Missed approach procedure shall be within BKK FIR only

MISSED APPROACH :

No turn before MAPt.
 Speed restricted to **MAX IAS 180 KT** until after turn.
 At MAPt, turn right climb to intercept BRG-193 MS NDB at MUMAI, then proceed on BRG-192 MS NDB to KEREE follow ARC 18 D MS to IF at 5000 FT and hold or as directed by ATC.



DME FM NDB/DME	0	0.7	2.5	3.5	5.0	7.4	9.1	16.0
NM FM THR 27	0	1.8	2.8	4.3	6.7	8.4	15.3	

OCA/H	A	B	C	Distance to MS	3.5 D	4 D	SDF01	6 D	SDF02	8 D	FAF		
Straight-in Approach	1680 (1004)			Altitude (Height)	1680 (1004)	1850 (1174)	2200 (1524)	2530 (1854)	3020 (2344)	3210 (2534)	3600 (2924)		
	NOT AUTHORIZED			Ground speed	knot			70	90	100	120	140	160
Circling (OCH AAL)	NOT AUTHORIZED			Rate of descent (5.6%)	(ft/min)			397	510	567	681	794	907